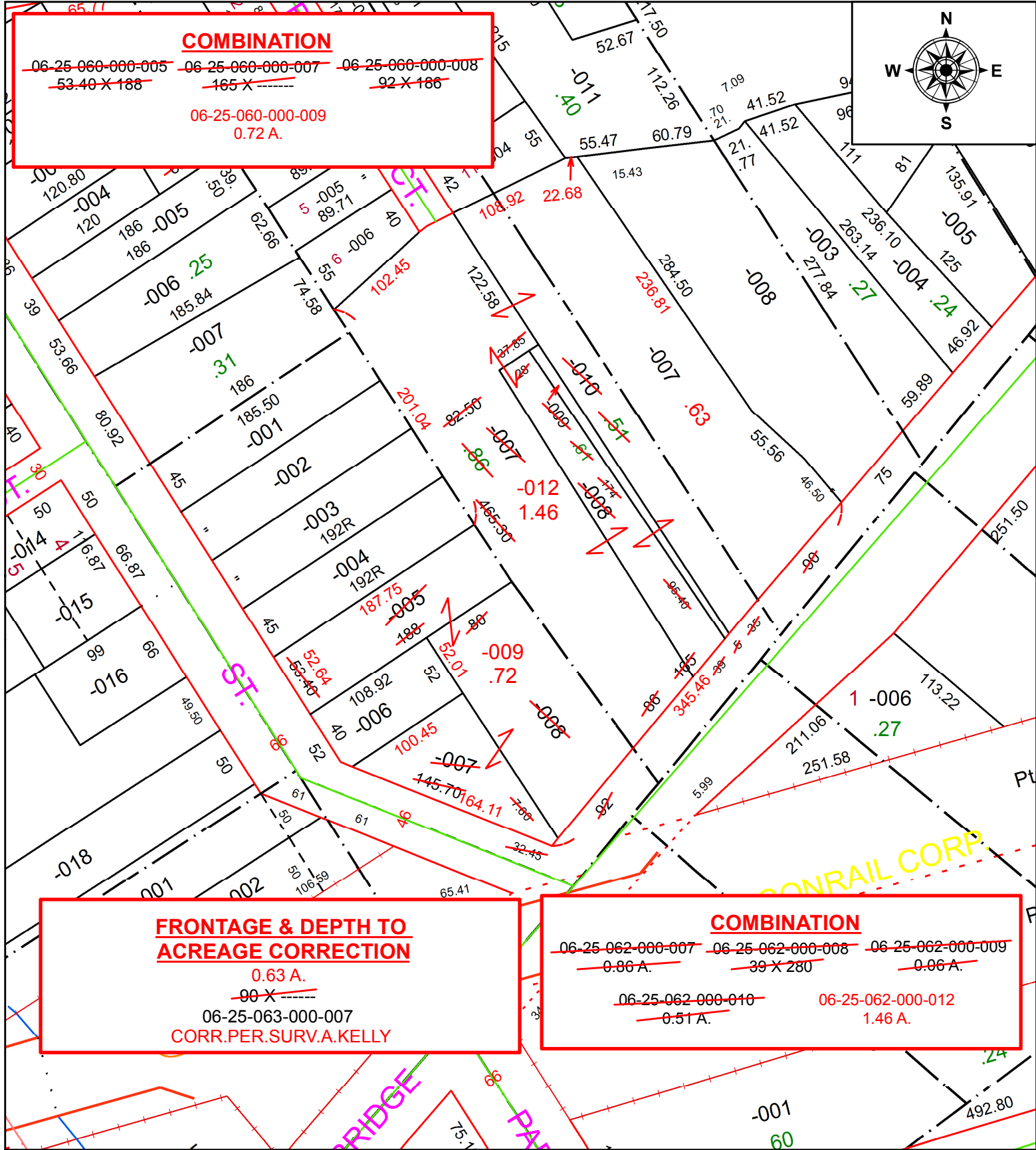


PARENT PARCEL: 06-25-060-000-005, -007, -008, 06-25-062-000-007, -008, -009, -010, 06-25-063-000-007

CHILD PARCEL: 06-25-060-000-009, 06-25-062-000-012, 06-25-063-000-007

STARTING POINT: INTERSECTION OF C/L OF EAST RIVER ST. AND C/L OF EAST BRIDGE ST.

20-04125



**COMBINATION**  
~~06-25-060-000-005~~ ~~06-25-060-000-007~~ ~~06-25-060-000-008~~  
~~53.40 X 188~~ ~~165 X~~ ~~92 X 186~~  
 06-25-060-000-009  
 0.72 A.

**COMBINATION**  
~~06-25-062-000-007~~ ~~06-25-062-000-008~~ ~~06-25-062-000-009~~  
~~0.86 A.~~ ~~39 X 280~~ ~~0.06 A.~~  
~~06-25-062-000-010~~ 06-25-062-000-012  
~~0.51 A.~~ 1.46 A.

**FRONTAGE & DEPTH TO  
 ACREAGE CORRECTION**  
 0.63 A.  
~~90 X~~  
 06-25-063-000-007  
 CORR.PER.SURV.A.KELLY

**SPLITS/DEEDS PROCESSED**  
 LORAIN COUNTY TAX MAP DEPARTMENT  
 226 MIDDLE AVE. ELYRIA, OH

SURVEYED BY: AMY M. KELLY  
 CLOSURE: 1:200,615  
 MAP PAGE(S): 6-25-060  
 APPROVED BY: RRM DATE: 5-20-20  
 SCALE: 1" = 100 PRIOR INSTRUMENT: 20200751965