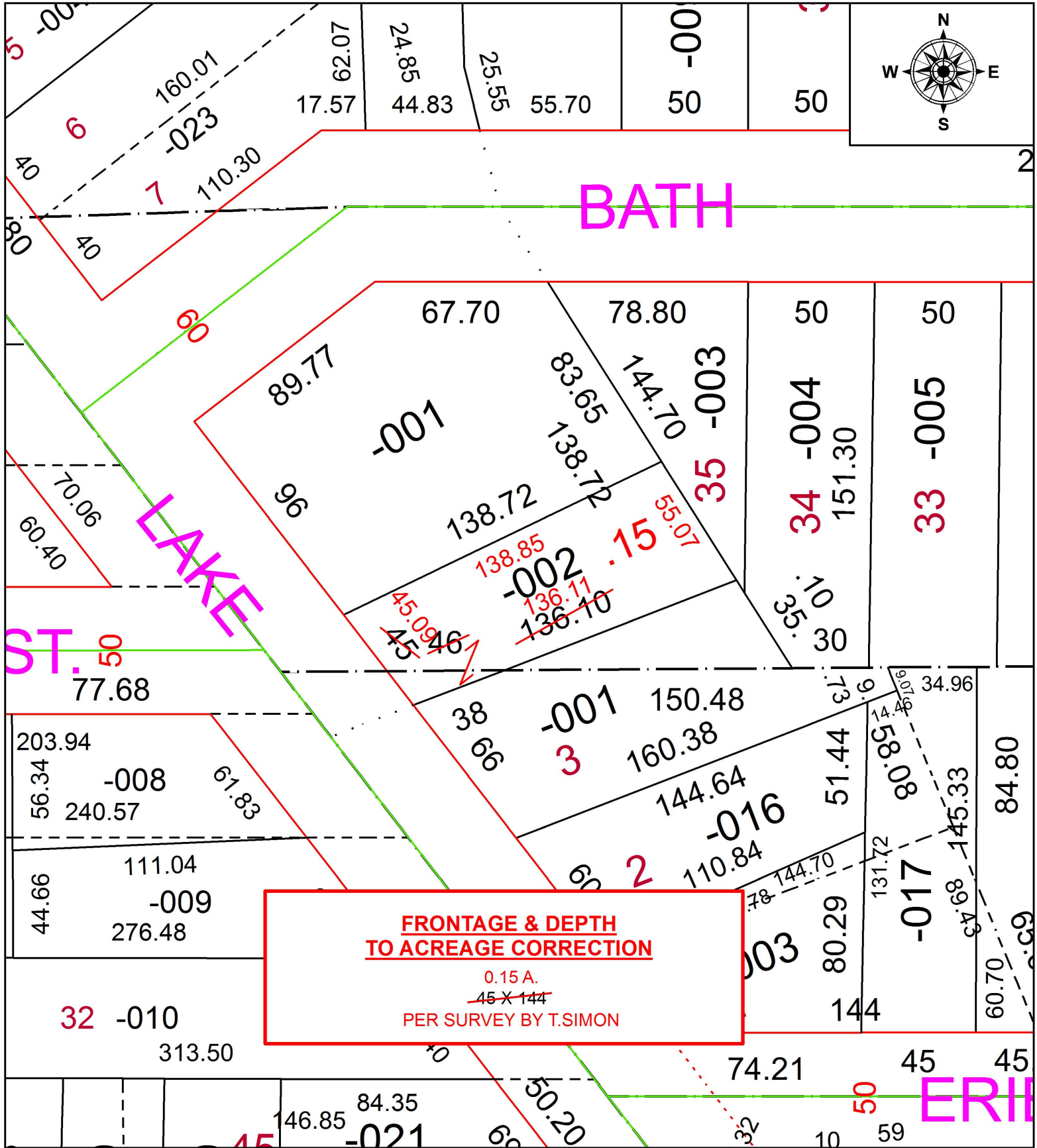


PARENT PARCEL: 06-24-063-101-002

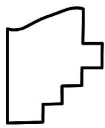
CHILD PARCEL:

STARTING POINT: SOUTHWEST CORNER OF S/L 3 IN G.E. NICHOLS ADDITION

19-04125-D



**FRONTAGE & DEPTH  
TO ACREAGE CORRECTION**  
0.15 A.  
~~45 X 144~~  
PER SURVEY BY T.SIMON



**SPLITS/DEEDS PROCESSED**  
LORAIN COUNTY TAX MAP DEPARTMENT  
226 MIDDLE AVE. ELYRIA, OH

SURVEYED BY: THOMAS A. SIMON  
CLOSURE: 1:125,392  
MAP PAGE(S): 6-24-063  
APPROVED BY: RRM DATE: 6-28-19  
SCALE: 1" = 50' PRIOR INSTRUMENT: 20190713329