

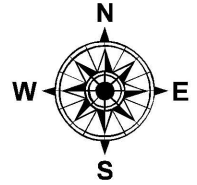
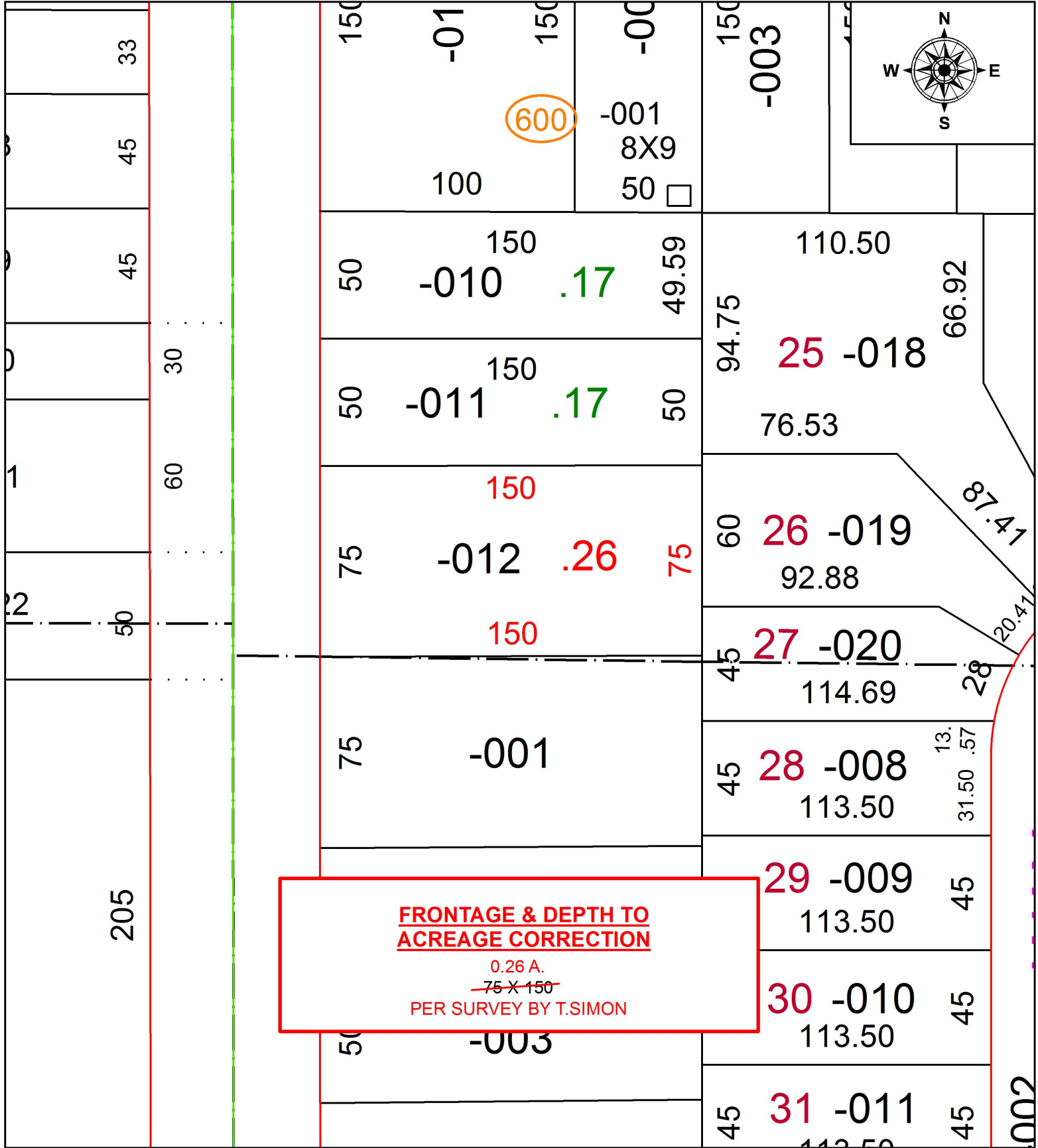
PARENT PARCEL: 06-24-112-000-012

CHILD PARCEL:

STARTING POINT:

INTERSECTION OF C/L OF THIRD ST. AND C/L OF WEST RIVER RD.

19-04121-C



**SPLITS/DEEDS PROCESSED**  
 LORAIN COUNTY TAX MAP DEPARTMENT  
 226 MIDDLE AVE. ELYRIA, OH

SURVEYED BY: THOMAS A. SIMON  
 CLOSURE: 1:2147483648  
 MAP PAGE(S): 6-24-112  
 APPROVED BY: RRM DATE: 6-21-19  
 SCALE: 1" = 50 PRIOR INSTRUMENT: 20090307527