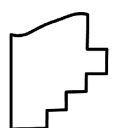
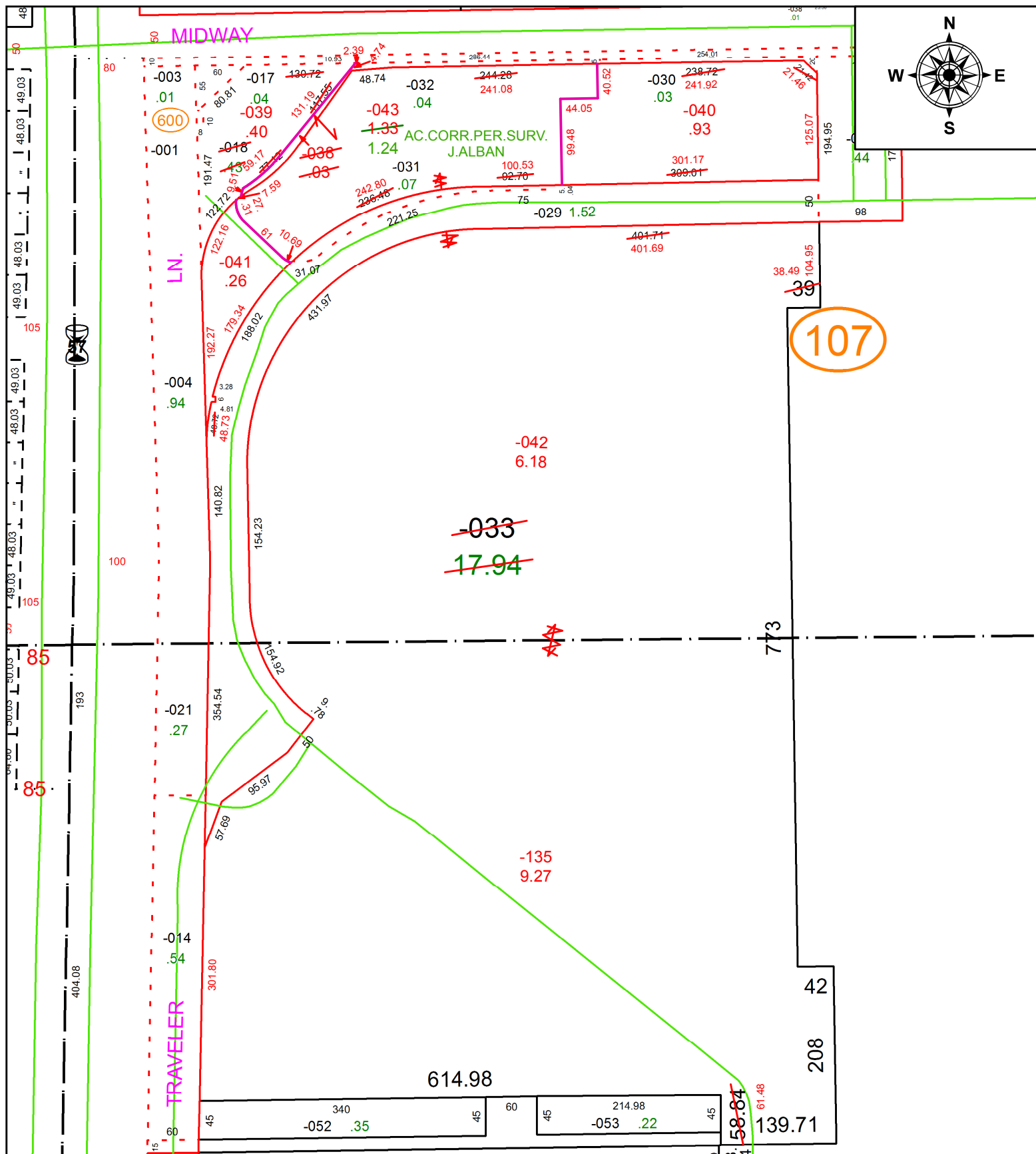


PARENT PARCEL: 06-24-031-107-018, -033

CHILD PARCEL: 06-24-030-000-135, 06-24-031-107-038 THRU -043

STARTING POINT: INTERSECTION OF C/L OF S.R. 57 AND C/L OF MIDWAY BLVD.

20-04119



**SPLITS/DEEDS PROCESSED**  
 LORAIN COUNTY TAX MAP DEPARTMENT  
 226 MIDDLE AVE. ELYRIA, OH

SURVEYED BY: JOHN R. ALBAN  
 CLOSURE: 1:75,469  
 MAP PAGE(S): 6-24-031  
 APPROVED BY: RRM DATE: 5-12-20  
 SCALE: 1" = 150 PRIOR INSTRUMENT: DV 944/997