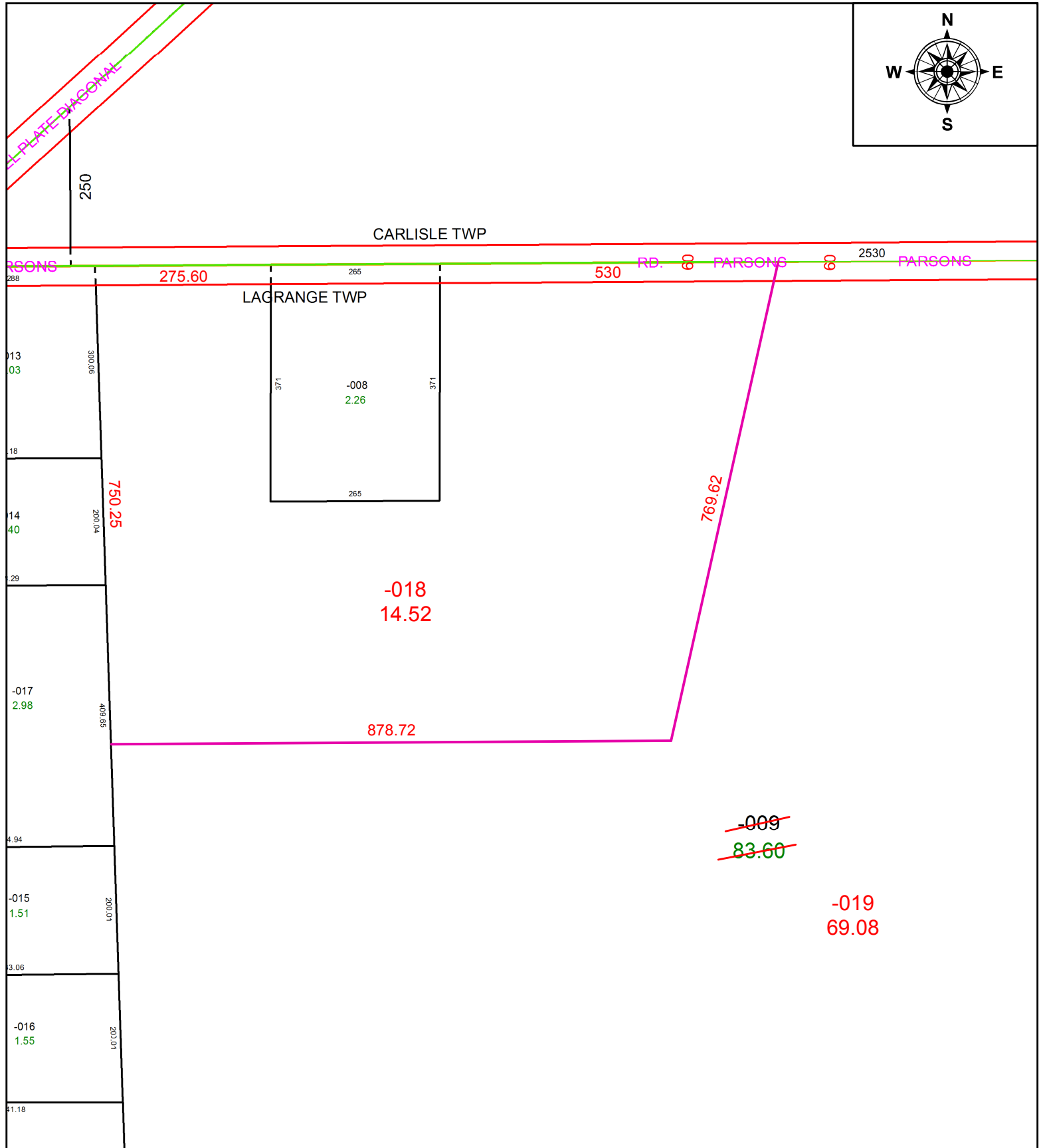
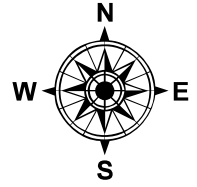


PARENT PARCEL: 15-00-002-000-009

CHILD PARCEL: 15-00-002-000-018, -019

STARTING POINT: INTERSECTION OF C/L OF DIAGONAL RD. AND C/L OF PARSONS RD.

20-04118



**SPLITS/DEEDS PROCESSED**  
 LORAIN COUNTY TAX MAP DEPARTMENT  
 226 MIDDLE AVE. ELYRIA, OH

SURVEYED BY: WILFREDO BARBOSA

CLOSURE: 1:882,745

MAP PAGE(S): 15-00-002

APPROVED BY: RRM DATE: 5-4-20

SCALE: 1" = 200 PRIOR INSTRUMENT: 20100349295