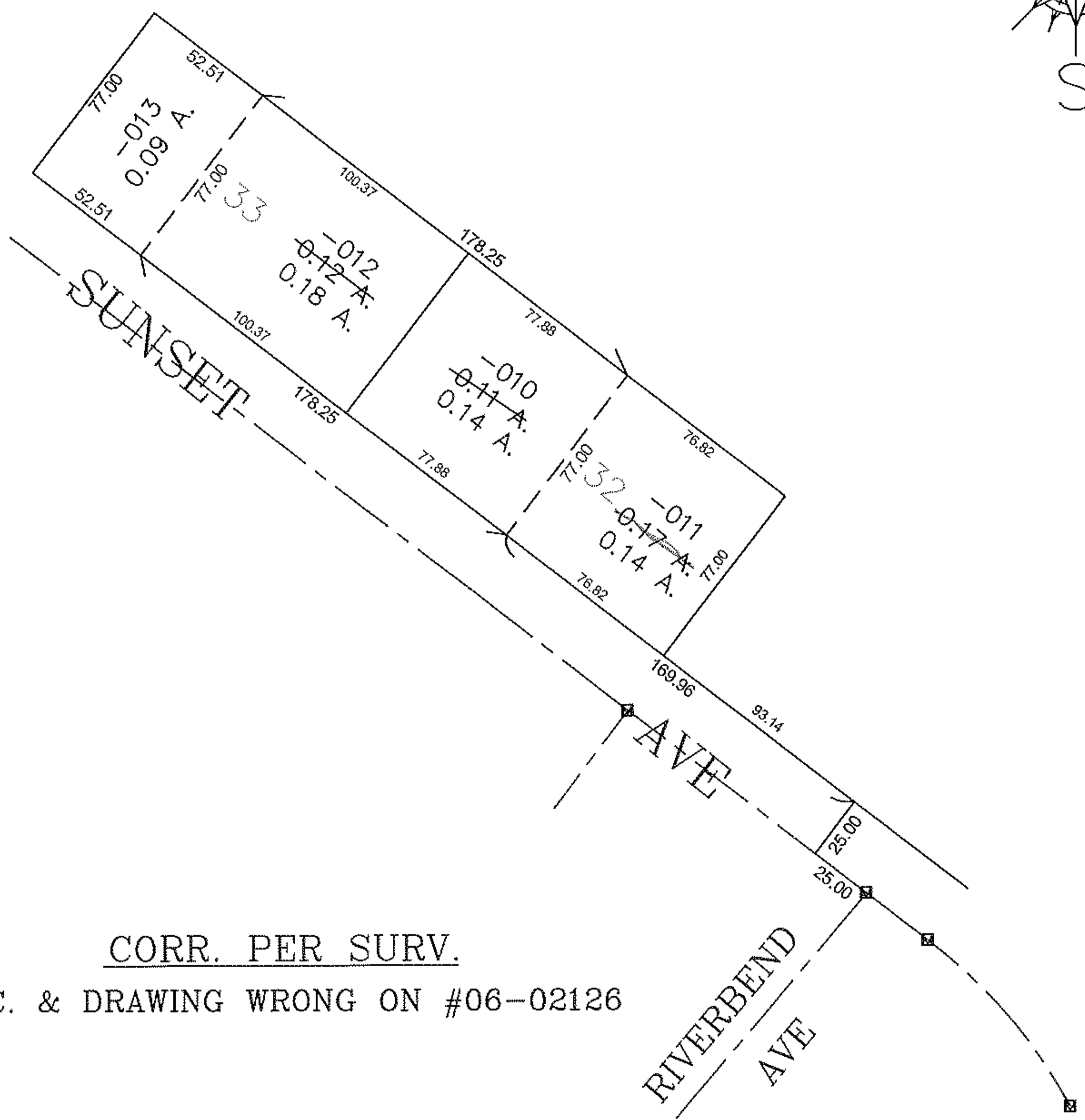
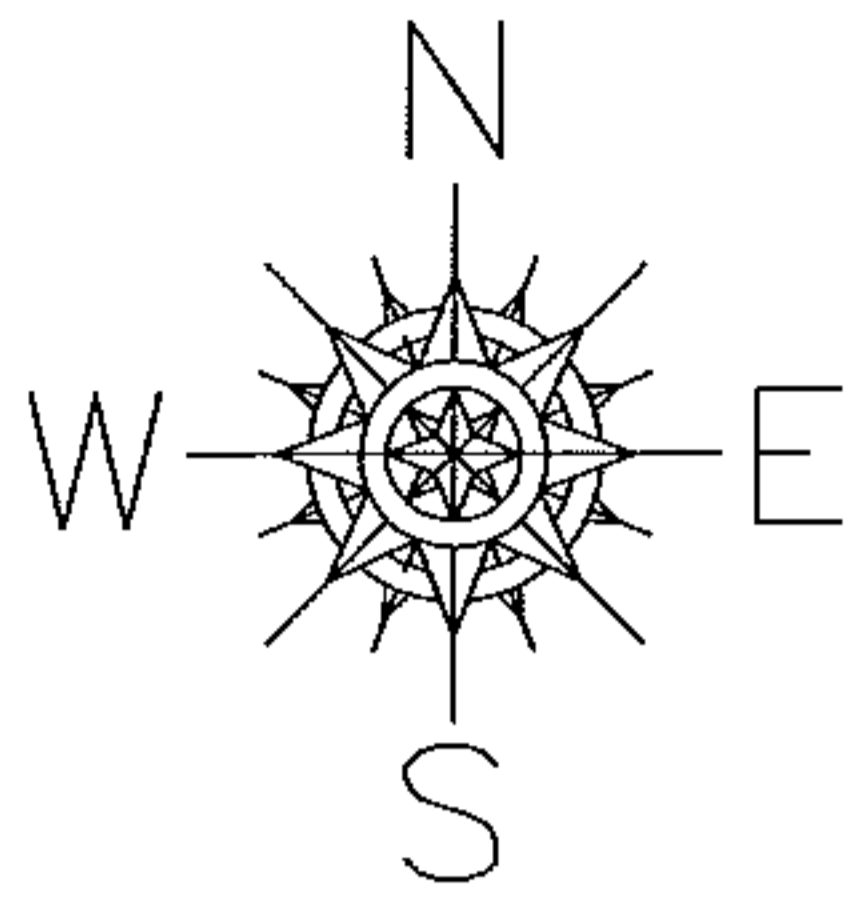
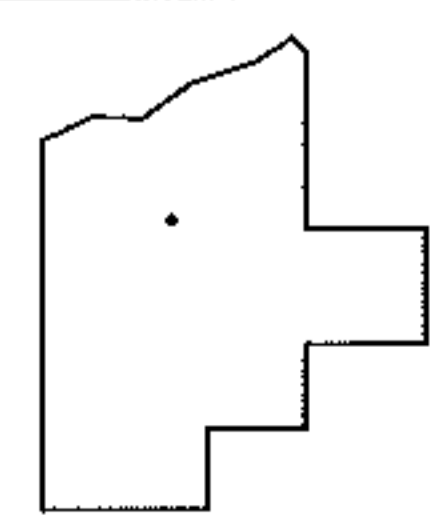


PARENT PARCEL: 02-01-003-271-010, -011, & -012  
 CHILD PARCEL: ACREAGE CORR. PER SURVEY/DEED #2006-0134622  
 STARTING POINT: CENTERLINE OF SUNSET AVE & RIVERBEND AVE

19-04118-A



CORR. PER SURV.  
 AC. & DRAWING WRONG ON #06-02126



SPLITS/DEEDS PROCESSED  
 LORAIN COUNTY TAX MAP DEPARTMENT  
 226 MIDDLE AVE. ELYRIA, OHIO

SURVEYED BY: CHRISTOPHER HIRZEL  
 CLOSURE: 0.00 : 10.000  
 MAP PAGE(S): 02-01-003-B  
 APPROVED BY: TJS DATE: 6/14/19  
 SCALE: 1" = 70' PRIOR INSTRUMENT: PL VOL 84/27