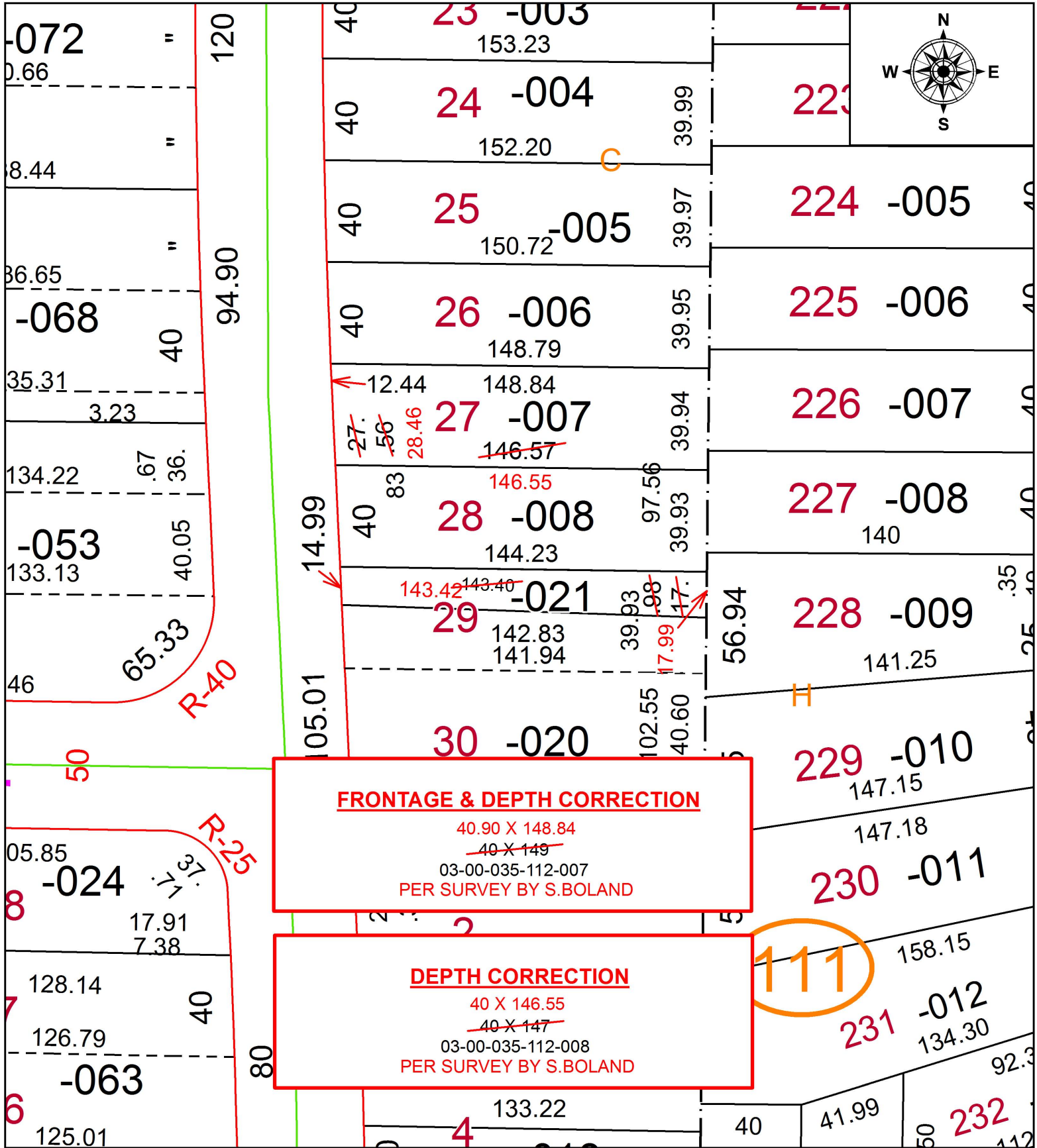


PARENT PARCEL: 03-00-035-112-007, -008, -021

CHILD PARCEL:

STARTING POINT: INTERSECTION OF C/L OF MADISON AVE. AND C/L OF MAPLE AVE.

19-04117-D



SPLITS/DEEDS PROCESSED
 LORAIN COUNTY TAX MAP DEPARTMENT
 226 MIDDLE AVE. ELYRIA, OH

SURVEYED BY: SEAN A. BOLAND
 CLOSURE: 1:319,187
 MAP PAGE(S): 3-00-035
 APPROVED BY: RRM DATE: 6-17-19
 SCALE: 1" = 50' PRIOR INSTRUMENT: 20170616727