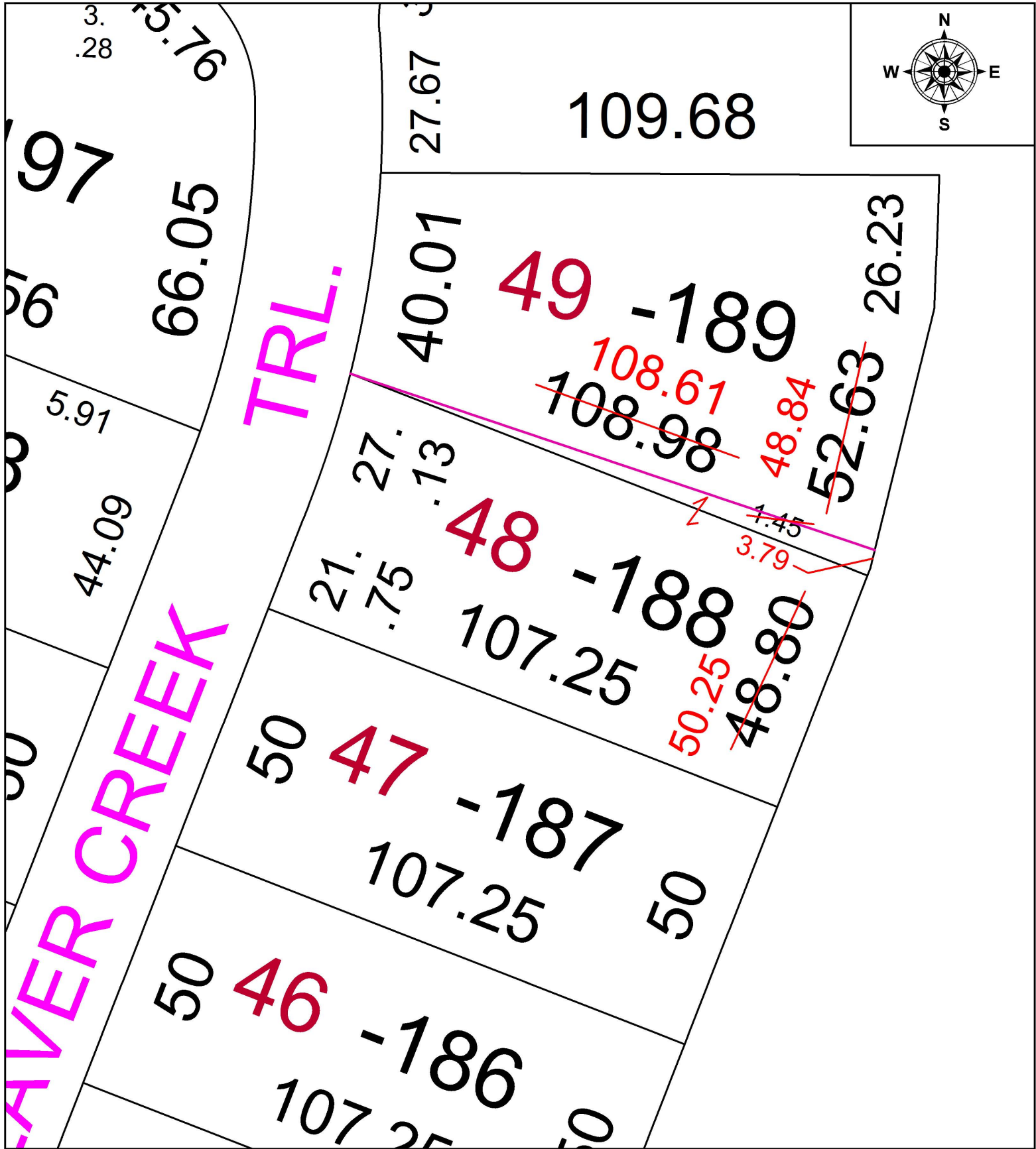


PARENT PARCEL: 05-00-020-000-188 & -189

CHILD PARCEL: **CERTIFICATE OF CORRECTION**

STARTING POINT: S/L 48 & S/L 49 PLAT VOL. 106 PG. 4-6

19-04116-C



SPLITS/DEEDS PROCESSED
LORAIN COUNTY TAX MAP DEPARTMENT
226 MIDDLE AVE. ELYRIA, OH

SURVEYED BY: MICHAEL SPELLACY

CLOSURE: 1: 33,000

MAP PAGE(S): 05-00-020

APPROVED BY: TJS DATE: 6/12/19

SCALE: 1" = 25' PRIOR INSTRUMENT: DV XXXX/XXXX