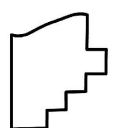
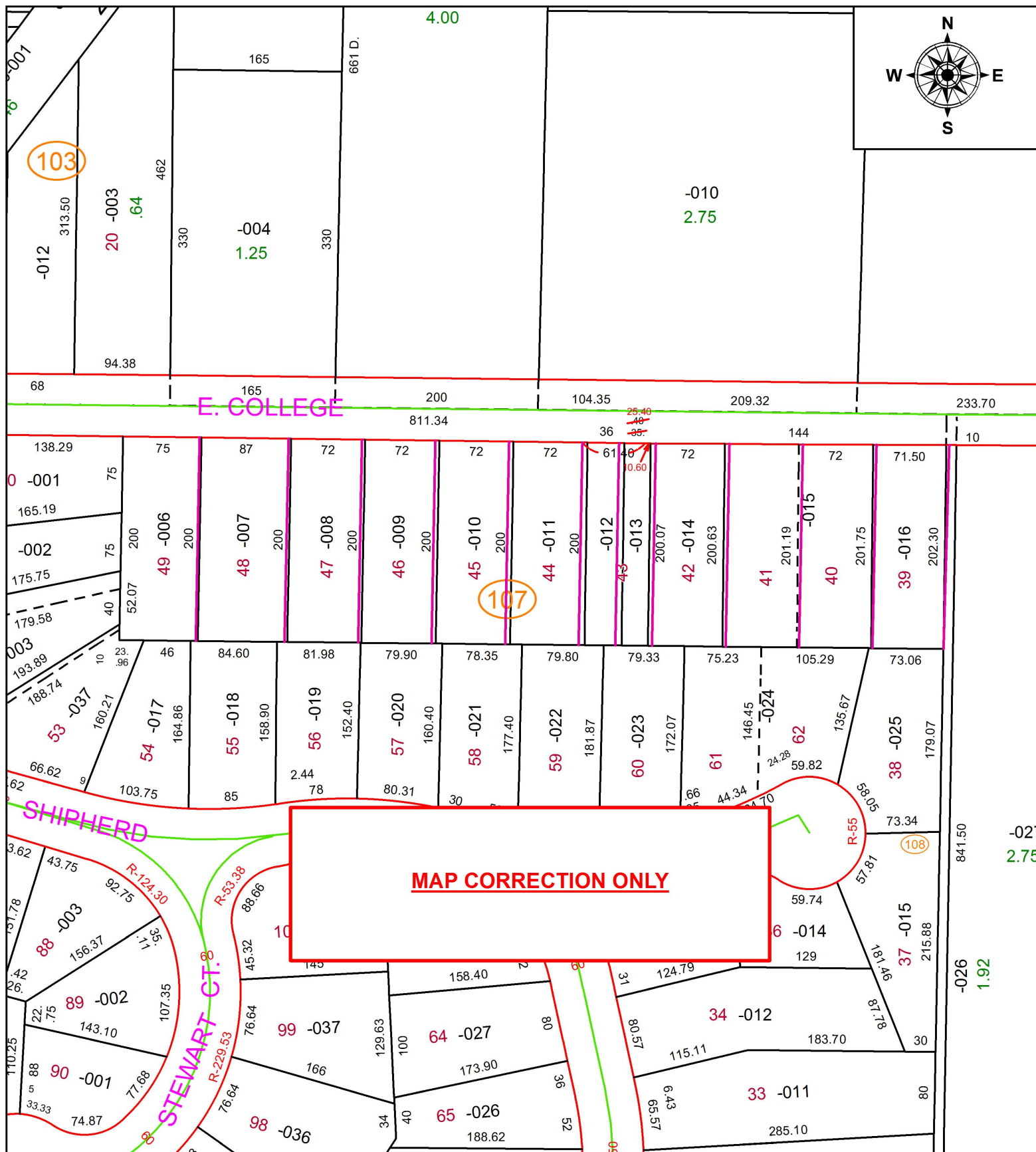


PARENT PARCEL: 09-00-087-107-006 THRU -016

CHILD PARCEL: \_\_\_\_\_

STARTING POINT: \_\_\_\_\_

19-04114-C



**SPLITS/DEEDS PROCESSED**  
 LORAIN COUNTY TAX MAP DEPARTMENT  
 226 MIDDLE AVE. ELYRIA, OH

SURVEYED BY: \_\_\_\_\_ N/A  
 CLOSURE: \_\_\_\_\_ N/A  
 MAP PAGE(S): 9-00-087  
 APPROVED BY: RRM DATE: 6-10-19  
 SCALE: 1" = 125' PRIOR INSTRUMENT: \_\_\_\_\_