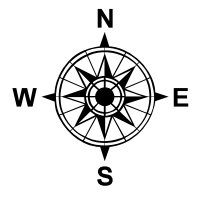
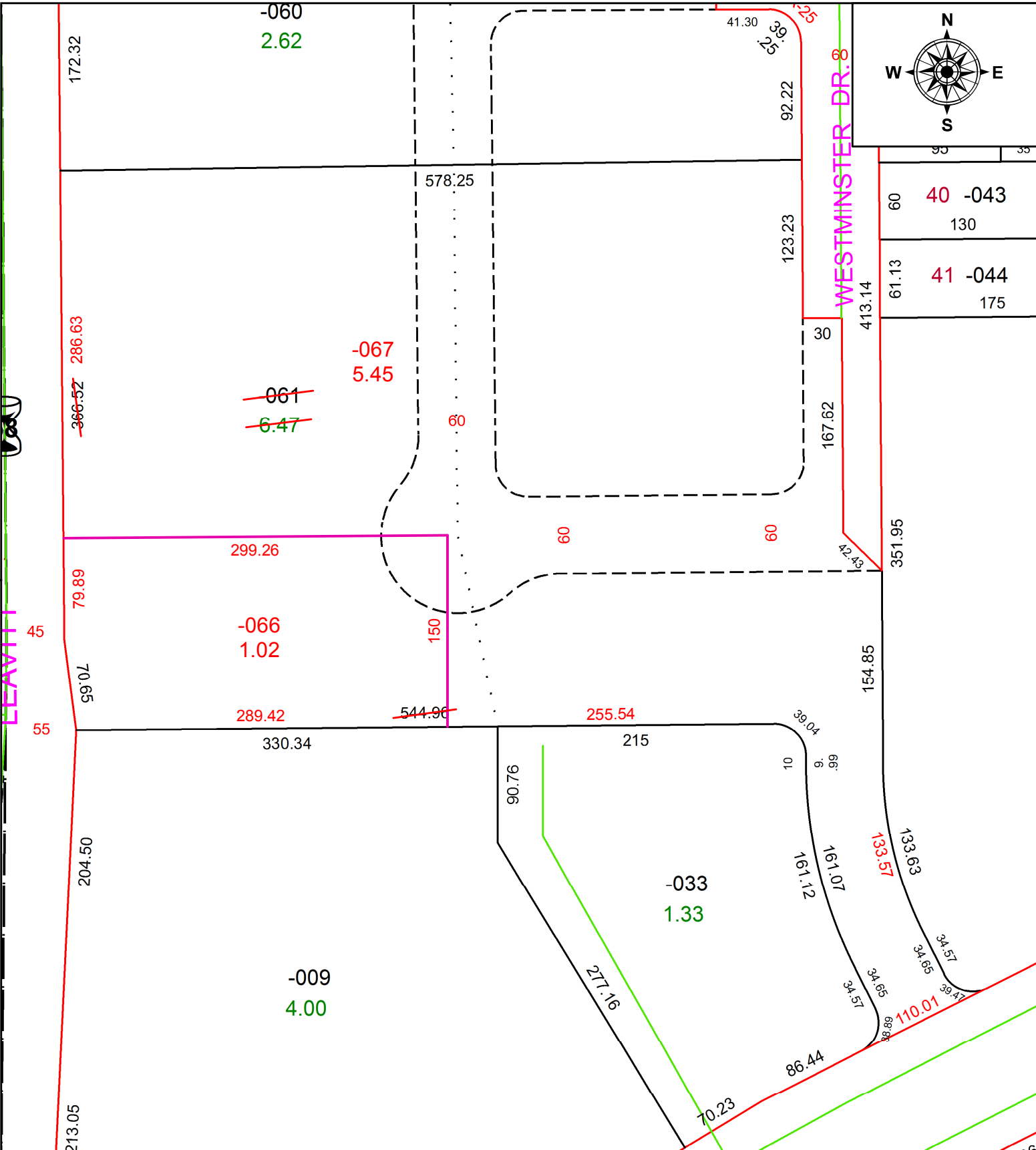
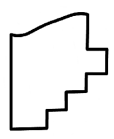


PARENT PARCEL: 02-02-007-101-061
 CHILD PARCEL: 02-02-007-101-066, -067
 STARTING POINT: SOUTHWEST CORNER OF BLOCK A IN WESTMINSTER SUB. NO.1

20-04113



60	40	-043
	130	
61.13	41	-044
	175	



SPLITS/DEEDS PROCESSED
 LORAIN COUNTY TAX MAP DEPARTMENT
 226 MIDDLE AVE. ELYRIA, OH

SURVEYED BY: NATHAN W. SAUTTER
 CLOSURE: 1:233,423
 MAP PAGE(S): 2-02-007
 APPROVED BY: RRM DATE: 4-3-20
 SCALE: 1" = 100 PRIOR INSTRUMENT: 20170646657