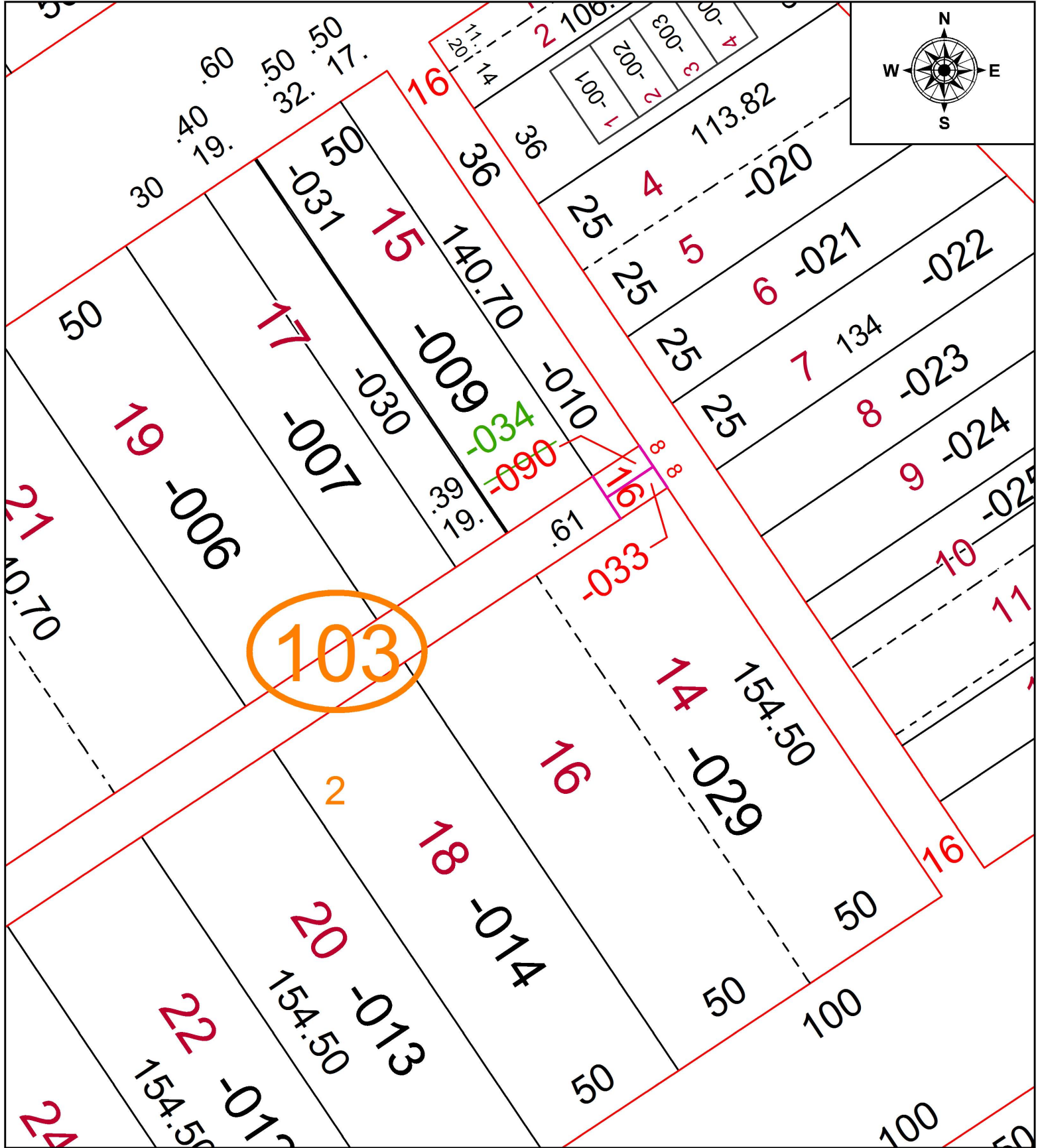


PARENT PARCEL: 02-01-004-101-090

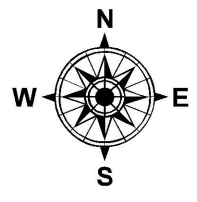
CHILD PARCEL: 02-01-004-103-034

STARTING POINT: PARCEL NUMBER CORRECTION

19-04111-C



103



SPLITS/DEEDS PROCESSED
 LORAIN COUNTY TAX MAP DEPARTMENT
 226 MIDDLE AVE. ELYRIA, OH

SURVEYED BY: DOUG HASEL
 CLOSURE: NA
 MAP PAGE(S): 02-01-004
 APPROVED BY: TJS DATE: 5/29/19
 SCALE: 1" = 40' PRIOR INSTRUMENT: DV XXXX/XXXX