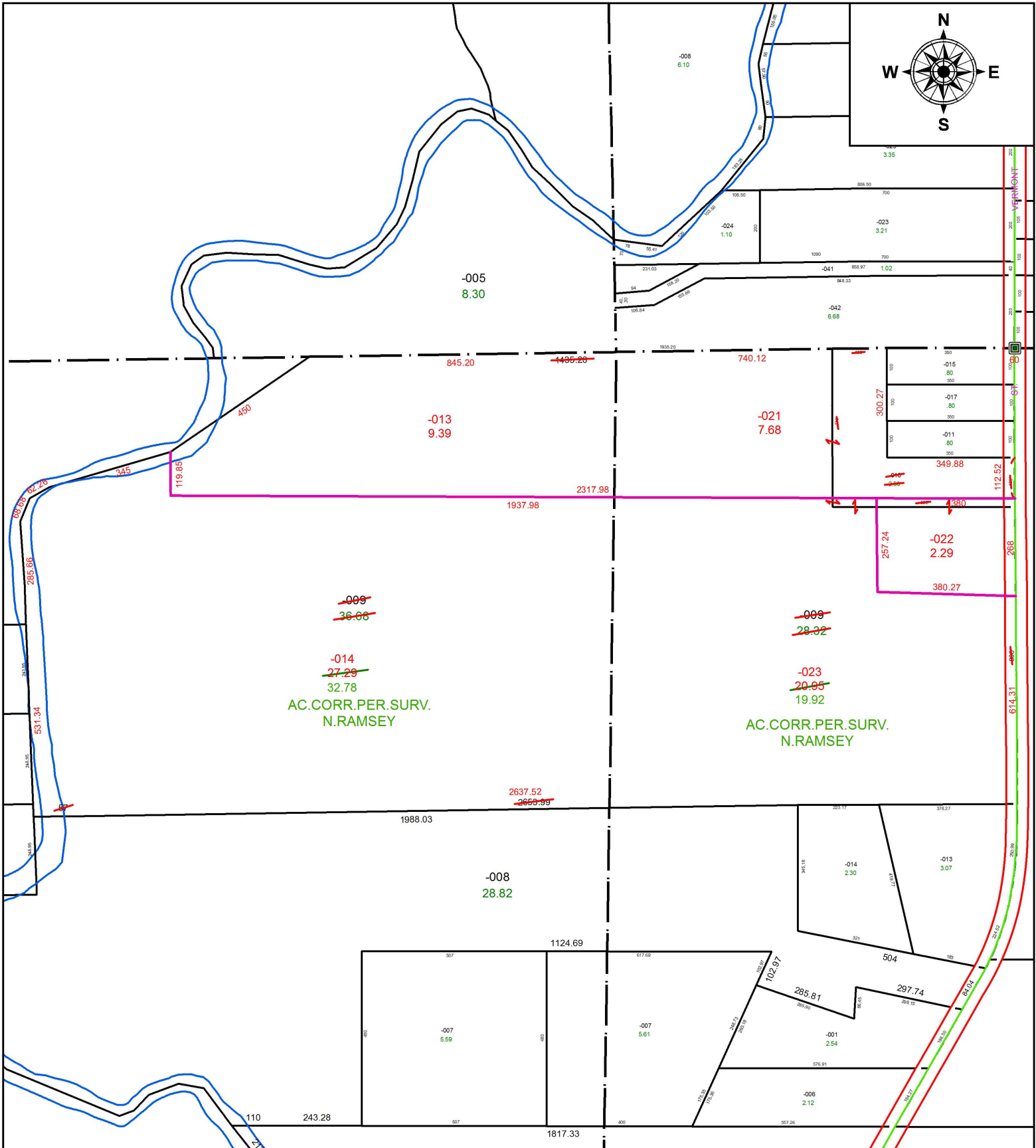
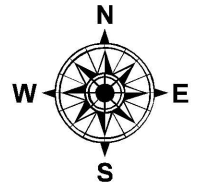


PARENT PARCEL: 15-00-091-000-009, -018, 15-00-092-000-009

CHILD PARCEL: 15-00-091-000-021 THRU -023, 15-00-092-000-013, -014

STARTING POINT: INTERSECTION OF NORTH LINE OF O.L.91 AND C/L OF VERMONT ST.

20-04110



SPLITS/DEEDS PROCESSED
LORAIN COUNTY TAX MAP DEPARTMENT
226 MIDDLE AVE. ELYRIA, OH

SURVEYED BY: NATHANIEL B. RAMSEY

CLOSURE: 1:454,214

MAP PAGE(S): 15-00-091

APPROVED BY: RRM DATE: 3-27-20

SCALE: 1" = 350 PRIOR INSTRUMENT: 20190732418