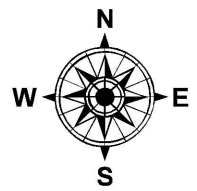
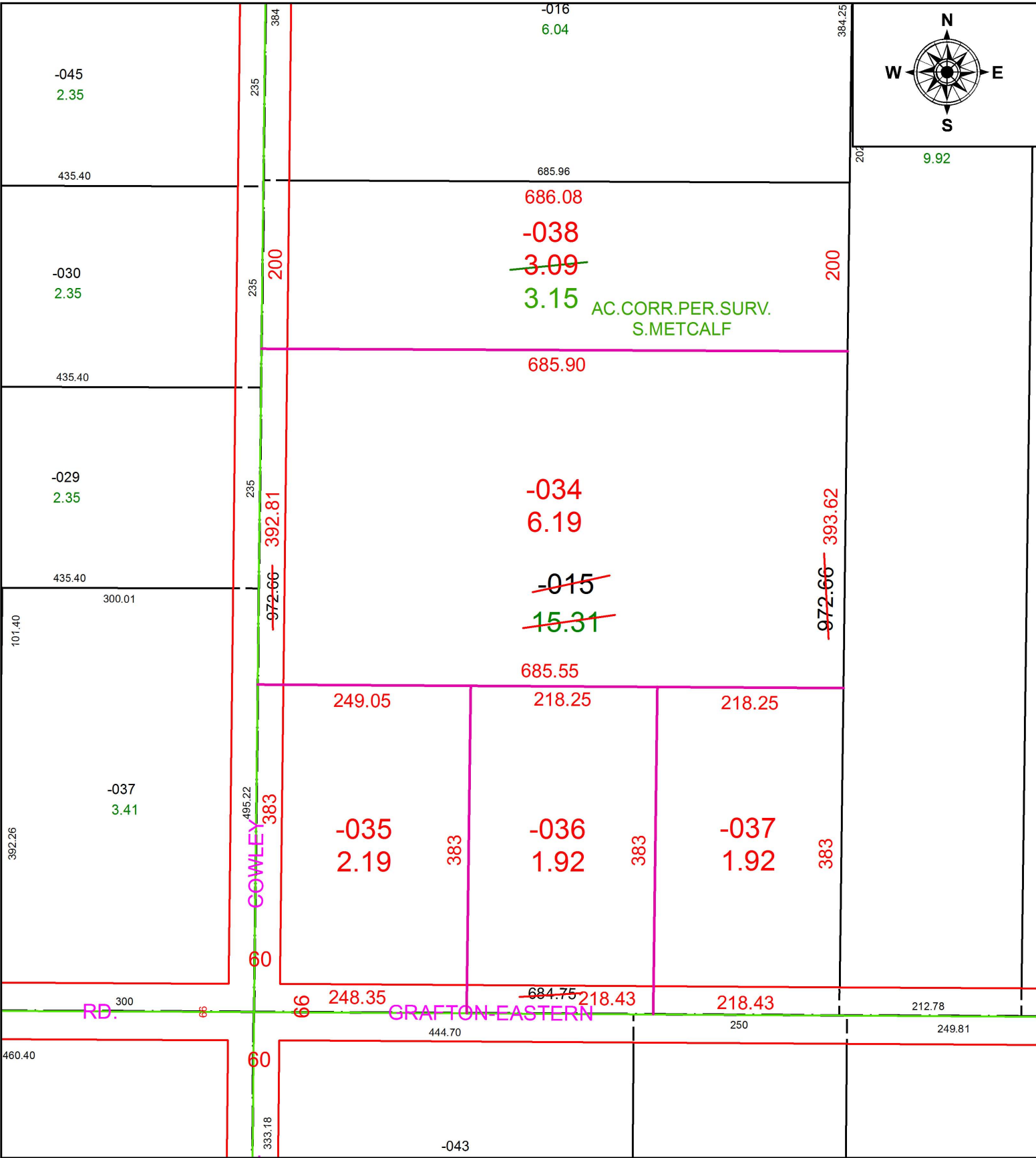


PARENT PARCEL: 16-00-011-000-015  
 CHILD PARCEL: 16-00-011-000-034 THRU -038  
 STARTING POINT: INTERSECTION OF C/L OF COWLEY RD. AND C/L OF GRAFTON EASTERN RD.

20-04103



**SPLITS/DEEDS PROCESSED**  
 LORAIN COUNTY TAX MAP DEPARTMENT  
 226 MIDDLE AVE. ELYRIA, OH

SURVEYED BY: STEVEN J. METCALF  
 CLOSURE: 1:174,185  
 MAP PAGE(S): 16-00-011  
 APPROVED BY: RRM DATE: 3-16-20  
 SCALE: 1" = 150 PRIOR INSTRUMENT: 20190734704