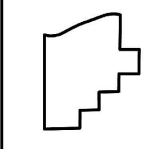
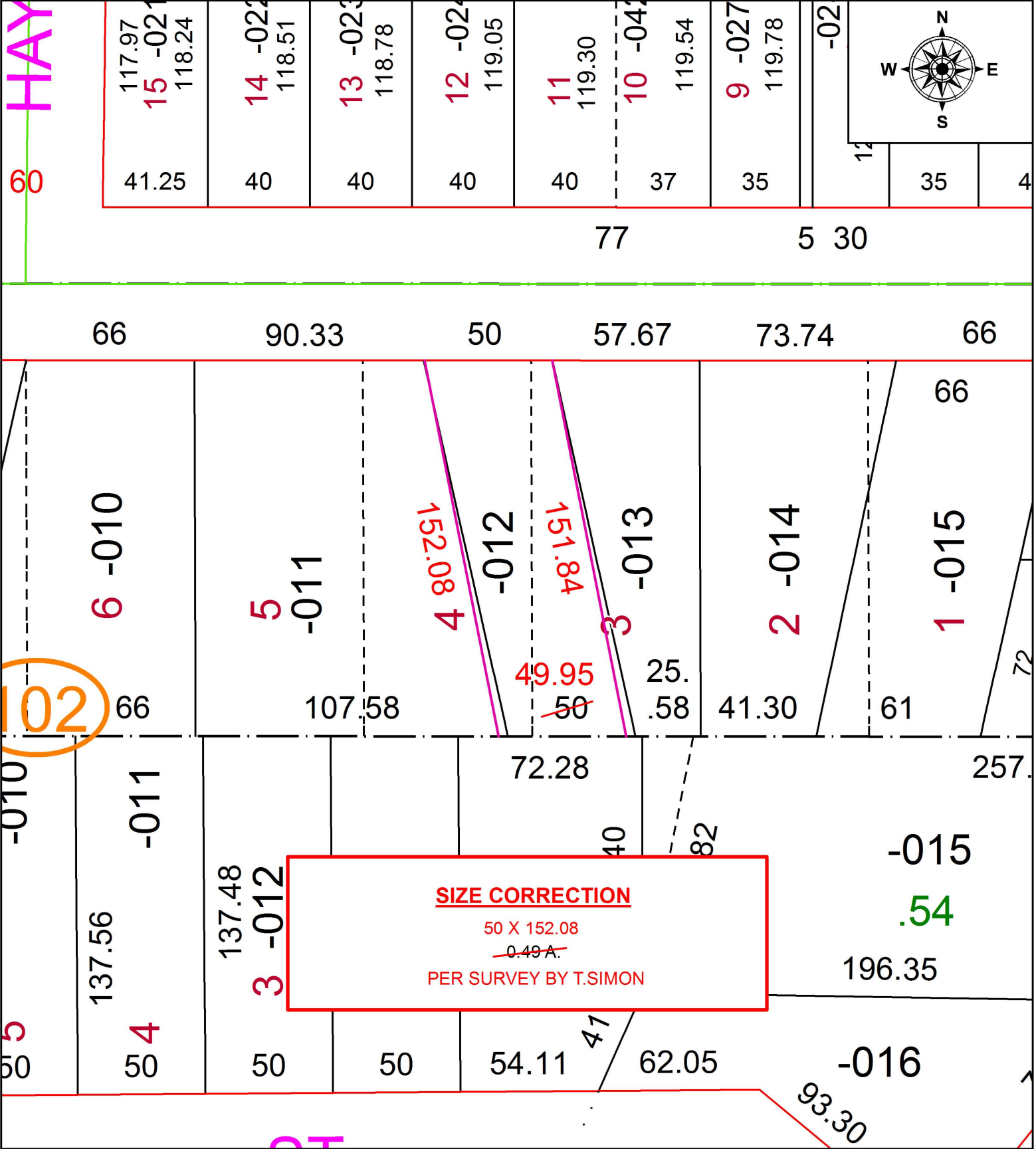


PARENT PARCEL: 06-24-056-000-012

CHILD PARCEL:

STARTING POINT: NORTHWEST CORNER OF S/L 7 IN ELY & PEMBER'S ADD.

19-04103-C



SPLITS/DEEDS PROCESSED
 LORAIN COUNTY TAX MAP DEPARTMENT
 226 MIDDLE AVE. ELYRIA, OH

SURVEYED BY: THOMAS A. SIMON
 CLOSURE: 1: 73,935
 MAP PAGE(S): 6-100
 APPROVED BY: RRM DATE: 5-29-19
 SCALE: 1" = 50 PRIOR INSTRUMENT: OR 971/722