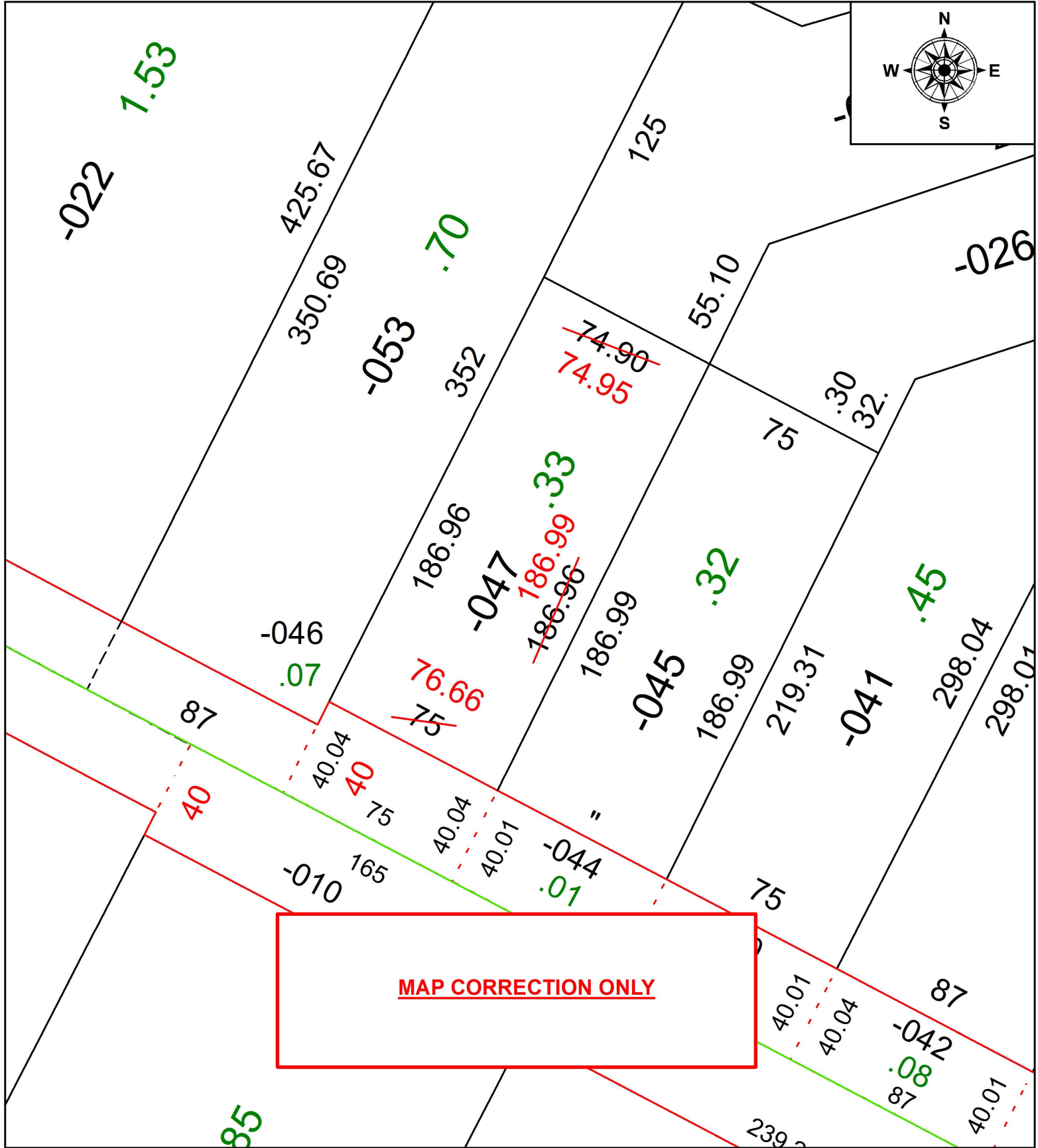


PARENT PARCEL: 06-21-005-101-047

CHILD PARCEL:

STARTING POINT: INTERSECTION OF C/L OF LAKE AVE. AND C/L OF ELYRIA AVE.

19-04101-D



**MAP CORRECTION ONLY**



**SPLITS/DEEDS PROCESSED**  
LORAIN COUNTY TAX MAP DEPARTMENT  
226 MIDDLE AVE. ELYRIA, OH

SURVEYED BY: THOMAS A. SIMON  
CLOSURE: 1: 70,446  
MAP PAGE(S): 6-21-005  
APPROVED BY: RRM DATE: 5-28-19  
SCALE: 1" = 50 PRIOR INSTRUMENT: 20180690005