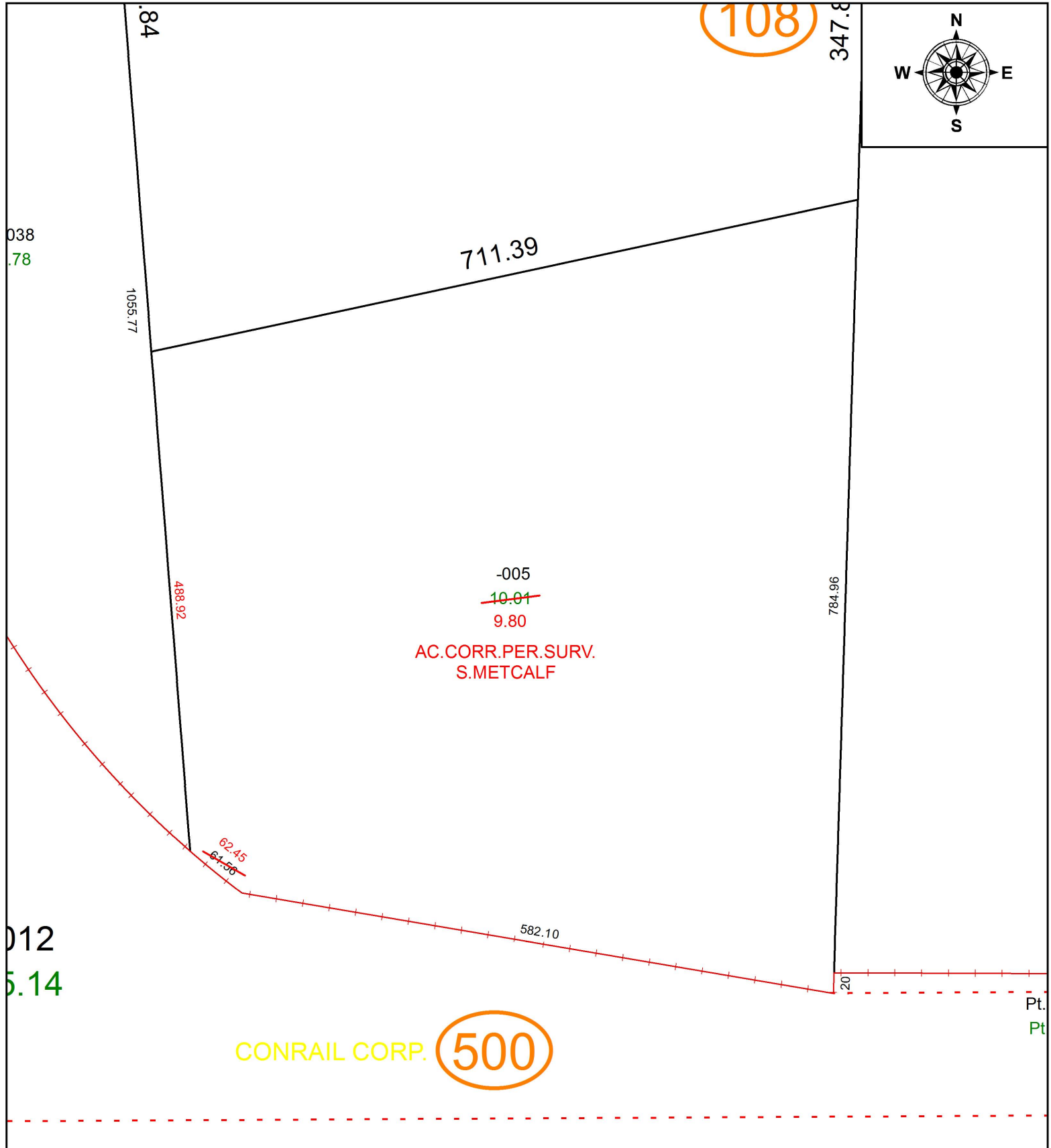


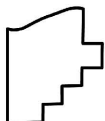
PARENT PARCEL: 07-00-046-108-005

CHILD PARCEL:

STARTING POINT: INTERSECTION OF C/L OF CENTER RIDGE RD. AND WEST LINE OF O.L.46

19-04100-A



 **SPLITS/DEEDS PROCESSED**
 LORAIN COUNTY TAX MAP DEPARTMENT
 226 MIDDLE AVE. ELYRIA, OH

Pt. 07-00-046-500-001
 SURVEYED BY: STEVEN J. METCALF
 CLOSURE: 1:1,954,955
 MAP PAGE(S): 7-00-046
 APPROVED BY: RRM DATE: 5-28-19
 SCALE: 1" = 125 PRIOR INSTRUMENT: 20090286018