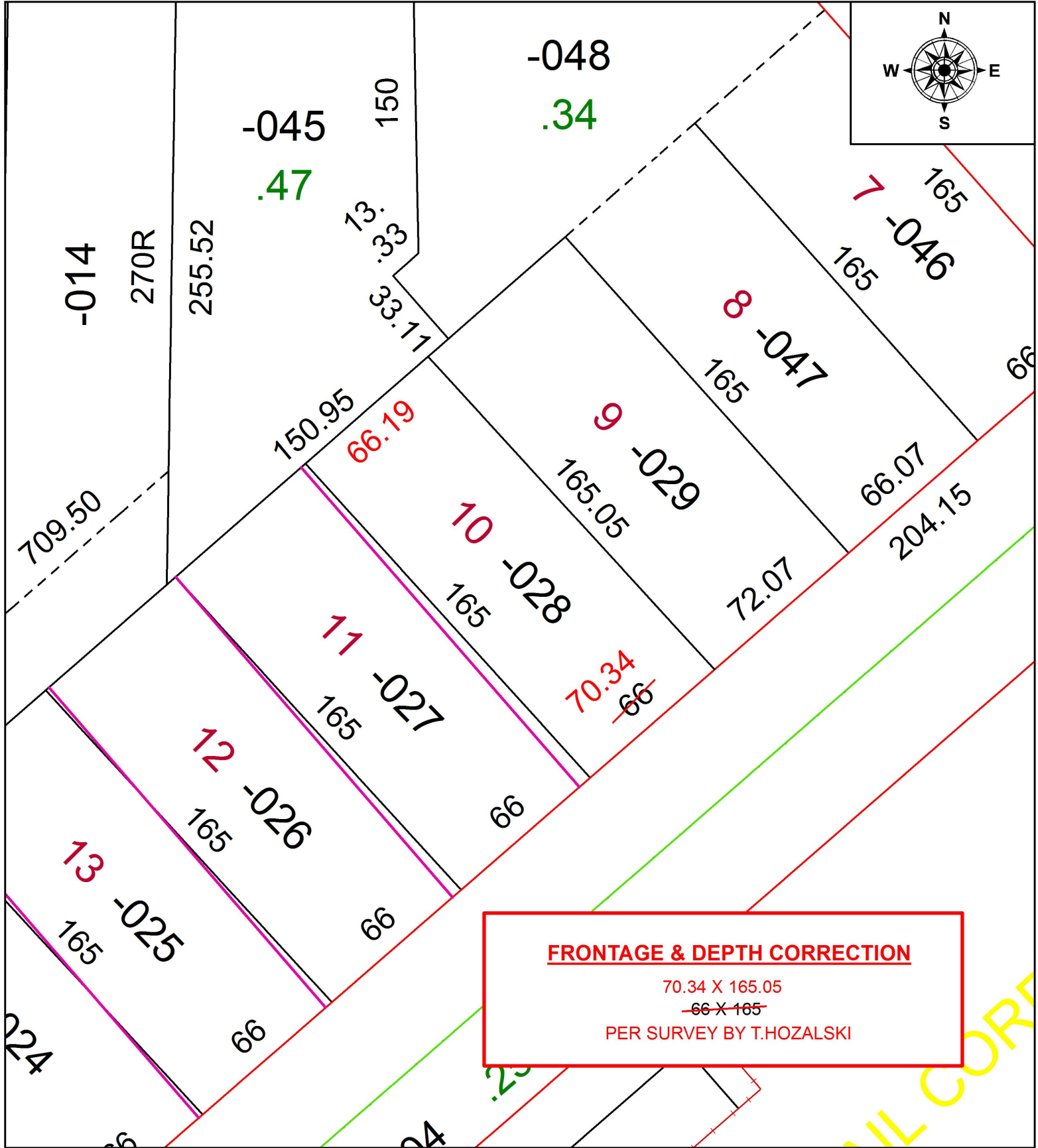


PARENT PARCEL: 18-00-028-112-028

CHILD PARCEL:

STARTING POINT: INTERSECTION OF NORTHWEST LINE OF KELLY ST. AND SOUTHWEST LINE OF JOHNS ST.

19-04099-D



SPLITS/DEEDS PROCESSED
LORAIN COUNTY TAX MAP DEPARTMENT
226 MIDDLE AVE. ELYRIA, OH

SURVEYED BY:	TIMOHTY D. HOZALSKI
CLOSURE:	1:91,844
MAP PAGE(S):	18-00-028
APPROVED BY:	RRM DATE: 5-24-19
SCALE:	1" = 50
PRIOR INSTRUMENT:	20180689032