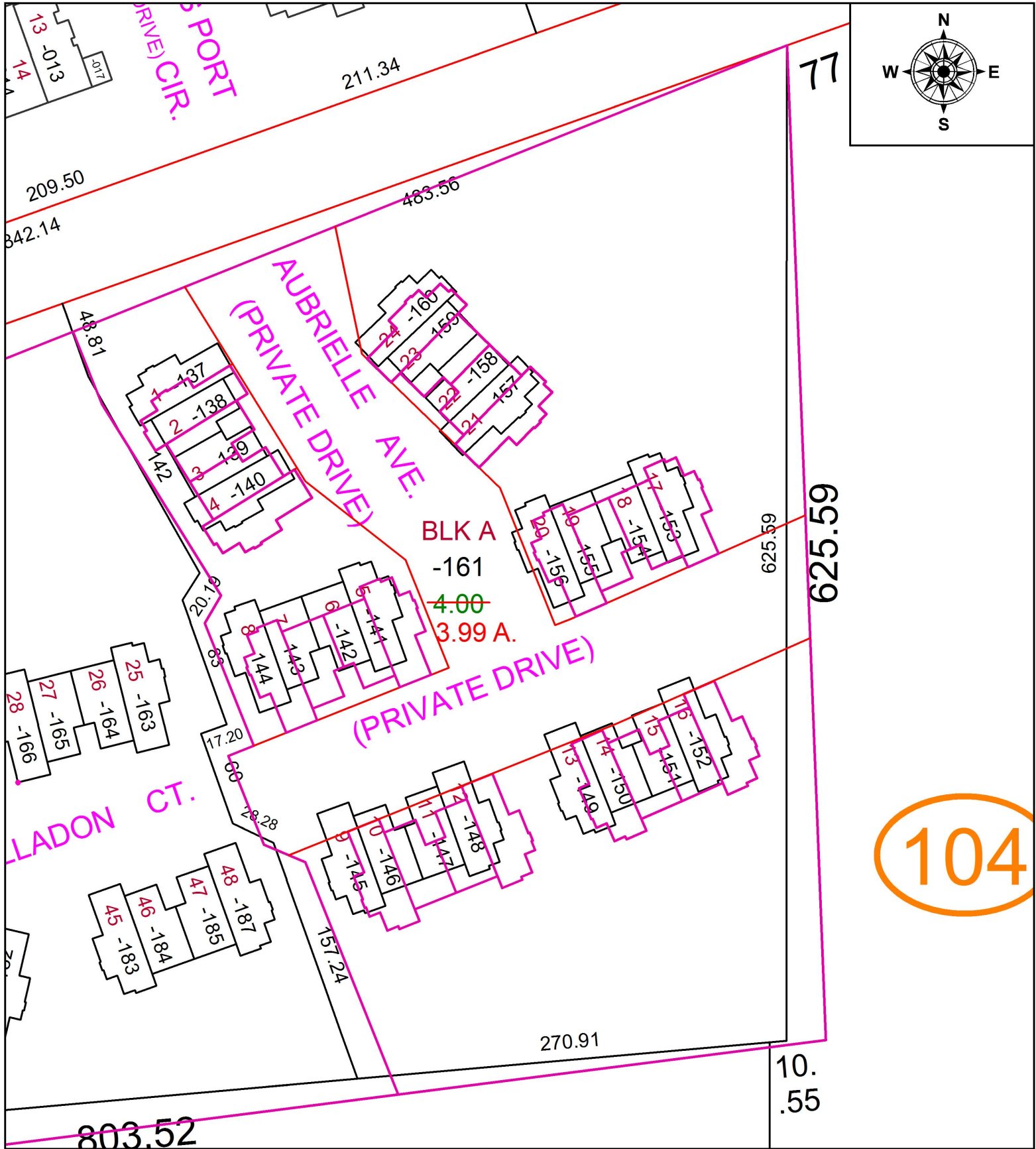


PARENT PARCEL: 04-00-008-104-161

CHILD PARCEL: AC. CORR. PER PLAT VOL. 102 PG. 19

STARTING POINT: NA

19-04096-A



104



SPLITS/DEEDS PROCESSED
 LORAIN COUNTY TAX MAP DEPARTMENT
 226 MIDDLE AVE. ELYRIA, OH

SURVEYED BY: JAMES T. SAYLER
 CLOSURE: 1: 33,000
 MAP PAGE(S): 04-00-008
 APPROVED BY: TJS DATE: 5/23/19
 SCALE: 1" = 200 PRIOR INSTRUMENT: DV XXXX/XXXX