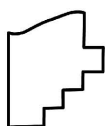
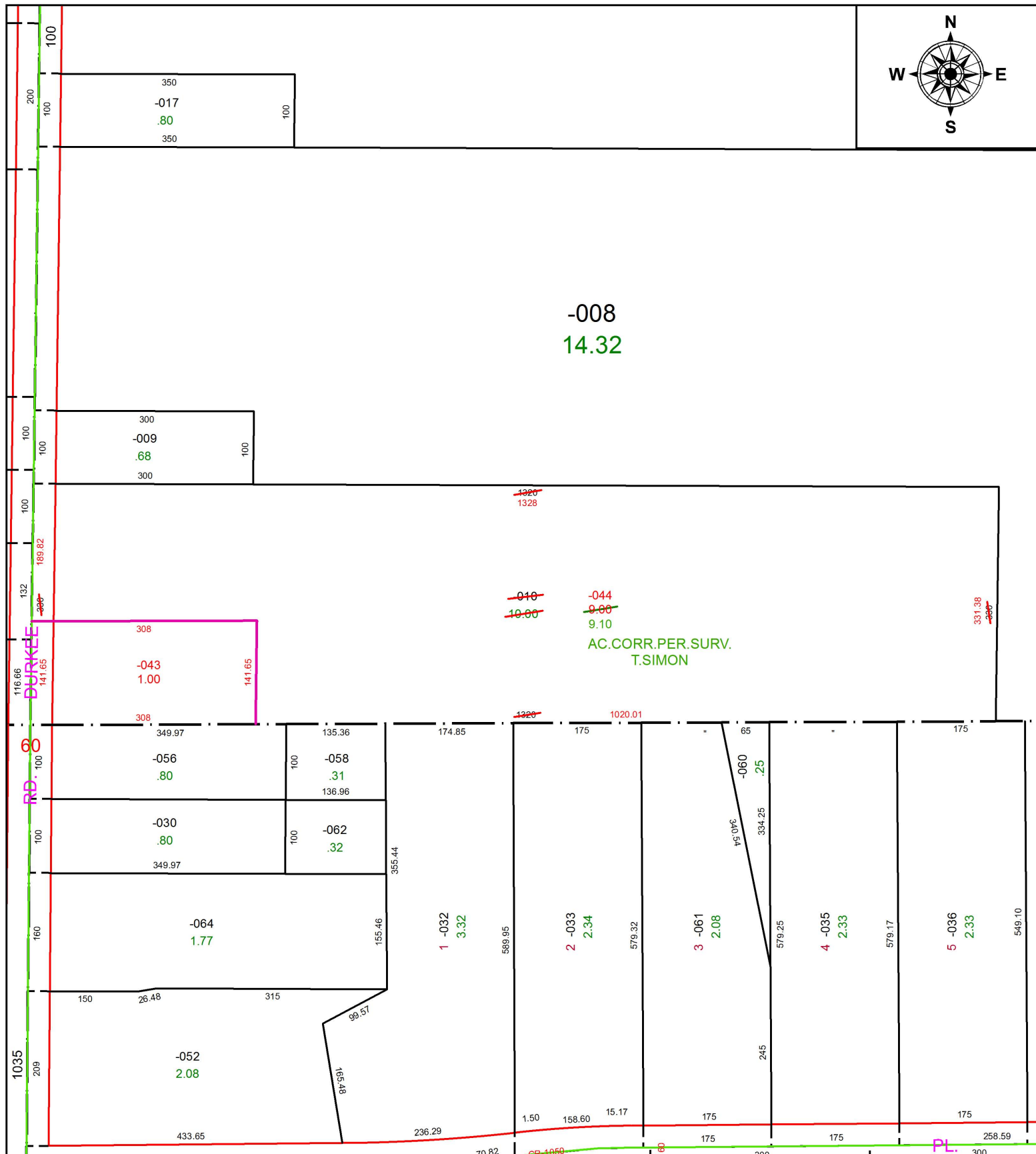
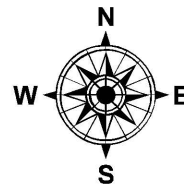


PARENT PARCEL: 11-00-078-000-010

CHILD PARCEL: 11-00-078-000-043, -044

STARTING POINT: SOUTHWEST CORNER OF O.L.78

20-04094



**SPLITS/DEEDS PROCESSED**  
 LORAIN COUNTY TAX MAP DEPARTMENT  
 226 MIDDLE AVE. ELYRIA, OH

SURVEYED BY: THOMAS A. SIMON

CLOSURE: 1:328,200

MAP PAGE(S): 11-00-078

APPROVED BY: RRM DATE: 3-2-20

SCALE: 1" = 175 PRIOR INSTRUMENT: 20140509671