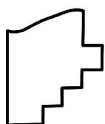
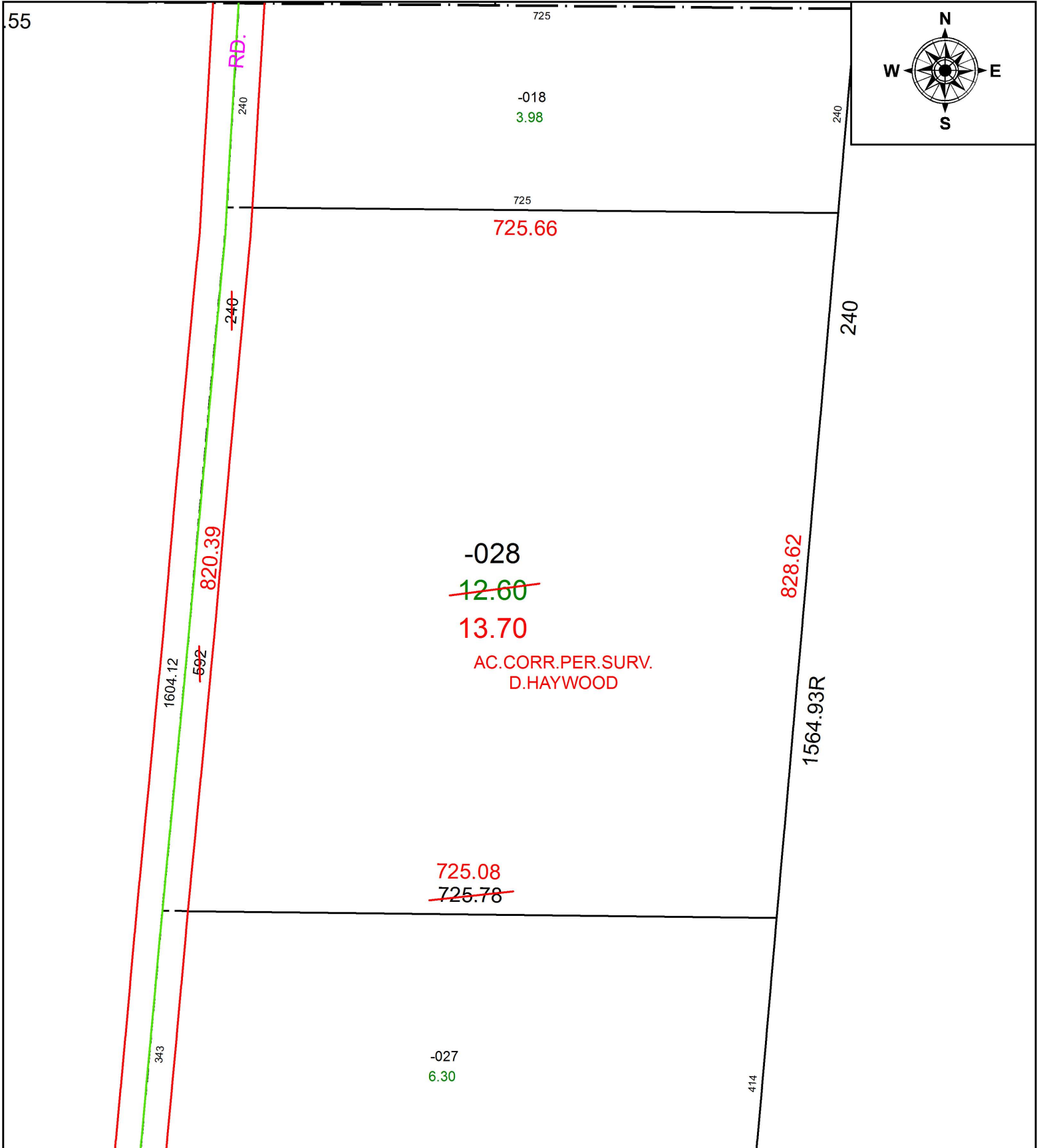


PARENT PARCEL: 13-10-030-000-028

CHILD PARCEL:

STARTING POINT: INTERSECTION OF C/L OF BAIRD RD. AND C/L OF S.R. 303

19-04093-A



SPLITS/DEEDS PROCESSED
 LORAIN COUNTY TAX MAP DEPARTMENT
 226 MIDDLE AVE. ELYRIA, OH

SURVEYED BY: DALE R. HAYWOOD
 CLOSURE: 1: 498,033
 MAP PAGE(S): 13-10-030
 APPROVED BY: RRM DATE: 5-24-19
 SCALE: 1" = 150 PRIOR INSTRUMENT: 20110384931