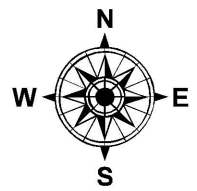
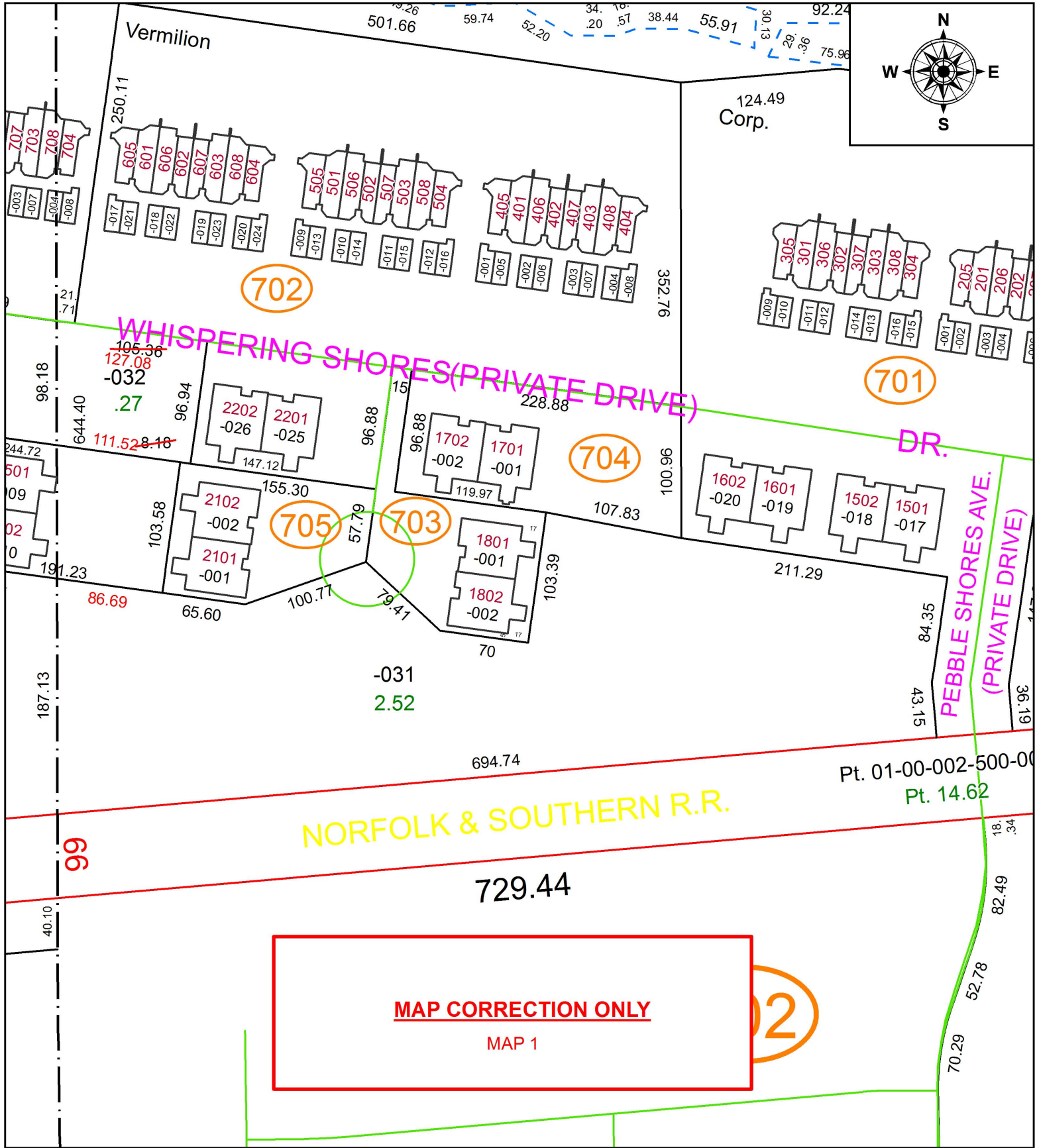


PARENT PARCEL: 01-00-005-102-031,-032

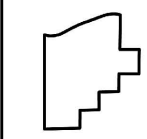
CHILD PARCEL:

STARTING POINT: INTERSECTION OF NORTH LINE OF NORFOLK SOUTHERN R.R. AND WEST LINE OF O.L.4

19-04090-D



MAP CORRECTION ONLY
MAP 1



SPLITS/DEEDS PROCESSED
LORAIN COUNTY TAX MAP DEPARTMENT
226 MIDDLE AVE. ELYRIA, OH

SURVEYED BY: BRENT D. ANDERSON
CLOSURE: 1:360,632
MAP PAGE(S): 1-00-005
APPROVED BY: RRM DATE: 5-16-19
SCALE: 1" = 100 PRIOR INSTRUMENT: N/A