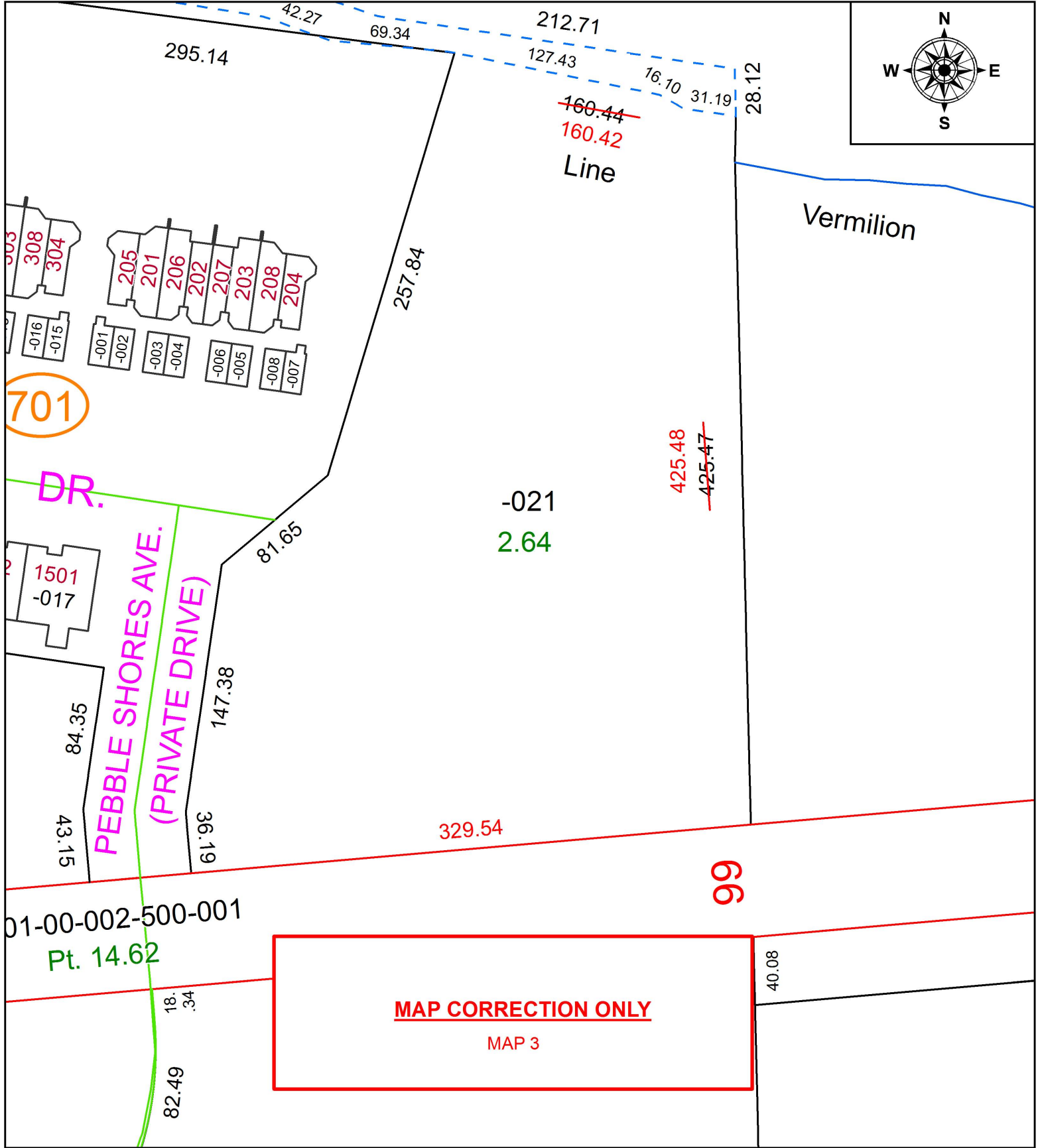
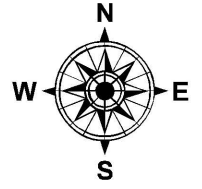


PARENT PARCEL: 01-00-005-102-021

CHILD PARCEL:

STARTING POINT: INTERSECTION OF NORTH LINE OF NORFOLK SOUTHERN R.R. AND WEST LINE OF O.L.4

19-04090-D

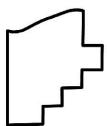


01-00-002-500-001

Pt. 14.62

MAP CORRECTION ONLY

MAP 3



SPLITS/DEEDS PROCESSED

LORAIN COUNTY TAX MAP DEPARTMENT
226 MIDDLE AVE. ELYRIA, OH

SURVEYED BY: BRENT D. ANDERSON

CLOSURE: 1:419,469

MAP PAGE(S): 1-00-005

APPROVED BY: RRM DATE: 5-16-19

SCALE: 1" = 75' PRIOR INSTRUMENT: N/A