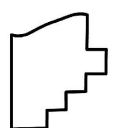
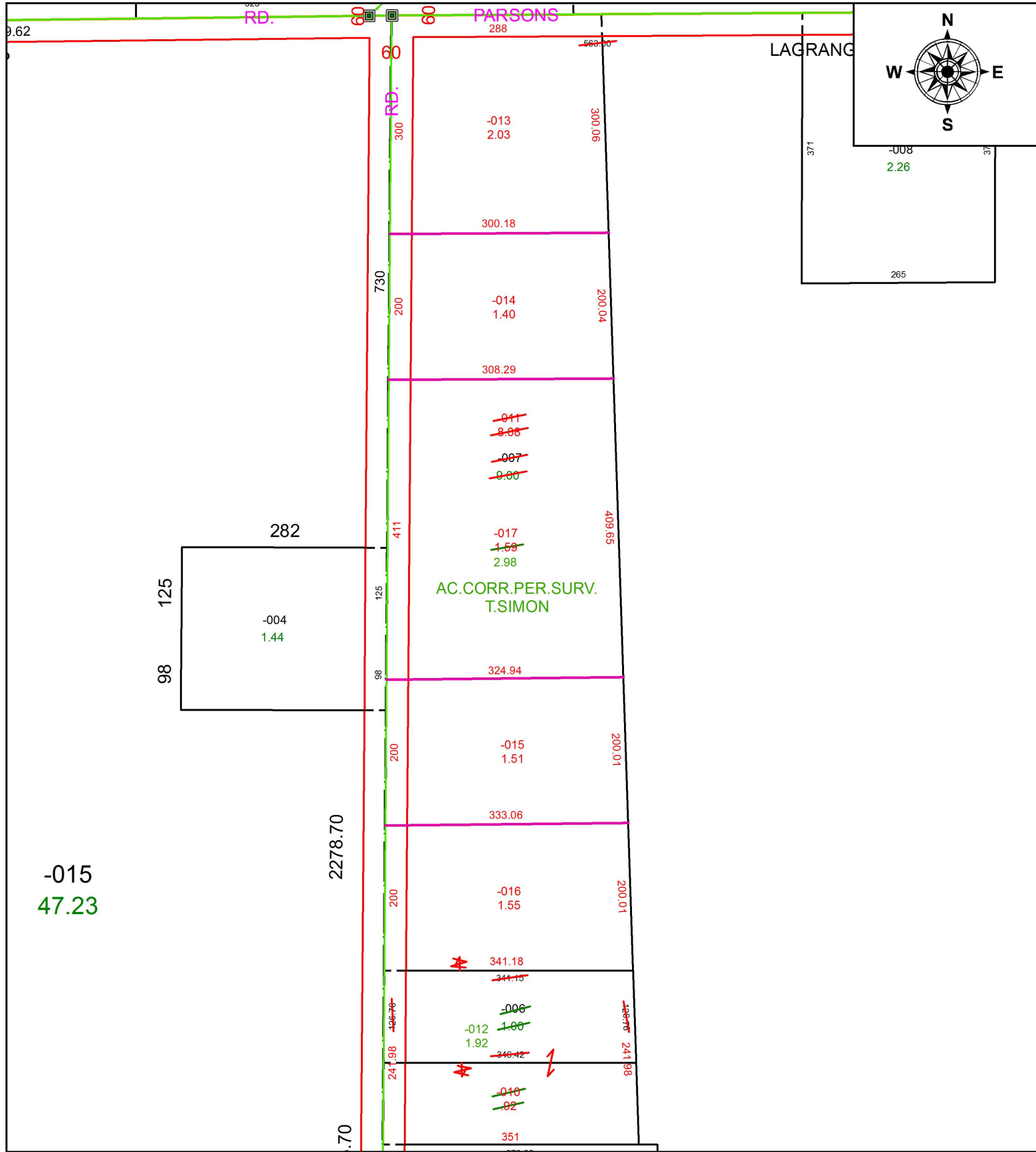


PARENT PARCEL: 15-00-002-000-006, -007

CHILD PARCEL: 15-00-002-000-010 THRU -017

STARTING POINT: INTERSECTION OF C/L OF PARSONS RD. AND C/L OF DIAGONAL RD.

20-04087



SPLITS/DEEDS PROCESSED
 LORAIN COUNTY TAX MAP DEPARTMENT
 226 MIDDLE AVE. ELYRIA, OH

SURVEYED BY: THOMAS A. SIMON
 CLOSURE: 1:175,700
 MAP PAGE(S): 15-00-002
 APPROVED BY: RRM DATE: 2-10-20
 SCALE: 1" = 175 PRIOR INSTRUMENT: 20190737533