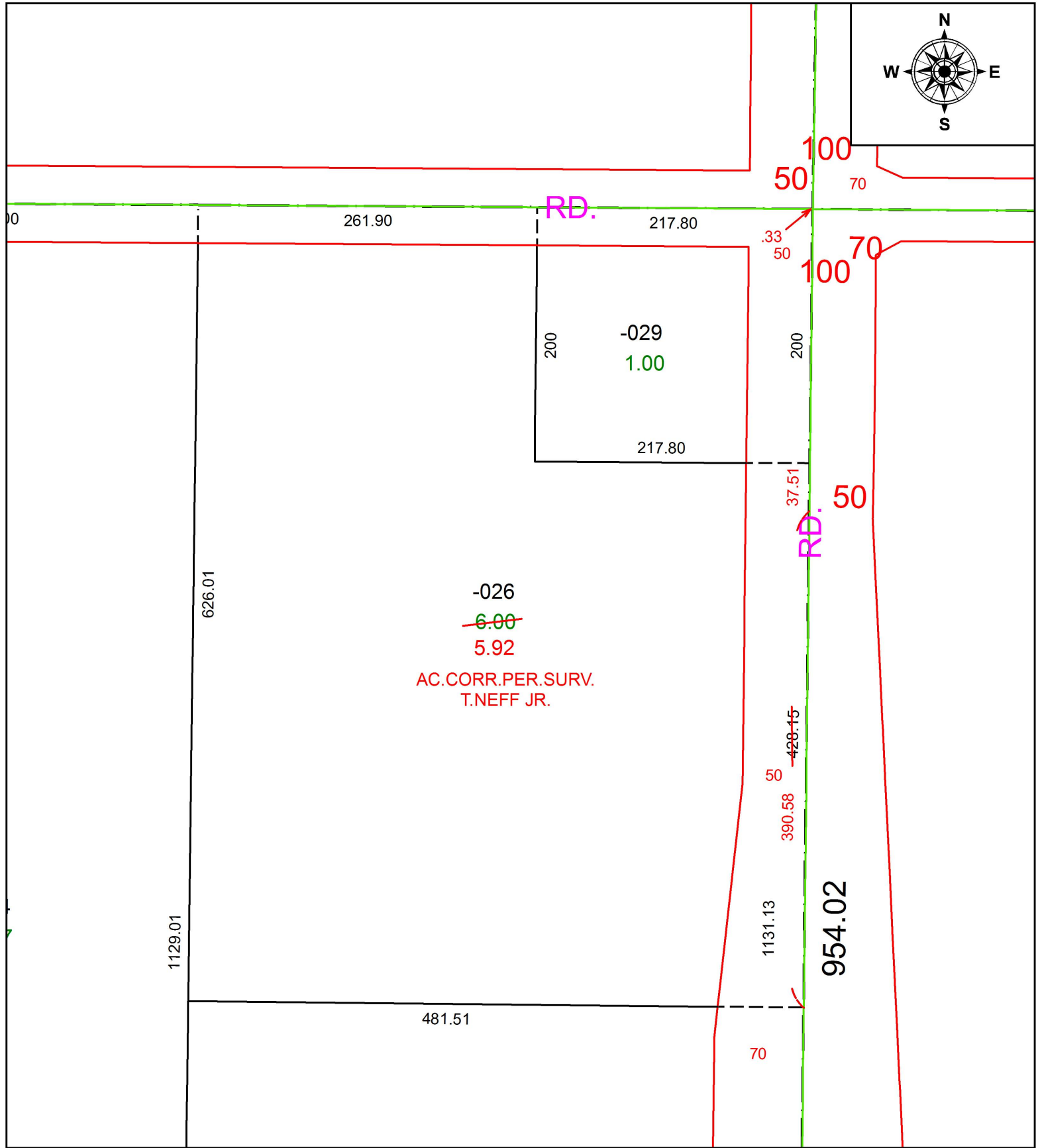


PARENT PARCEL: 16-00-076-000-026, -029

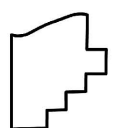
CHILD PARCEL:

STARTING POINT: INTERSECTION OF C/L OF LAW RD. AND C/L OF .S.R 83

19-04087-D



-026
~~6.00~~
5.92
AC. CORR. PER SURV.
T. NEFF JR.



SPLITS/DEEDS PROCESSED
LORAIN COUNTY TAX MAP DEPARTMENT
226 MIDDLE AVE. ELYRIA, OH

SURVEYED BY: THOMAS J. NEFF JR.
CLOSURE: 1:649,695
MAP PAGE(S): 16-00-076
APPROVED BY: RRM DATE: 5-9-19
SCALE: 1" = 100 PRIOR INSTRUMENT: 20180665702