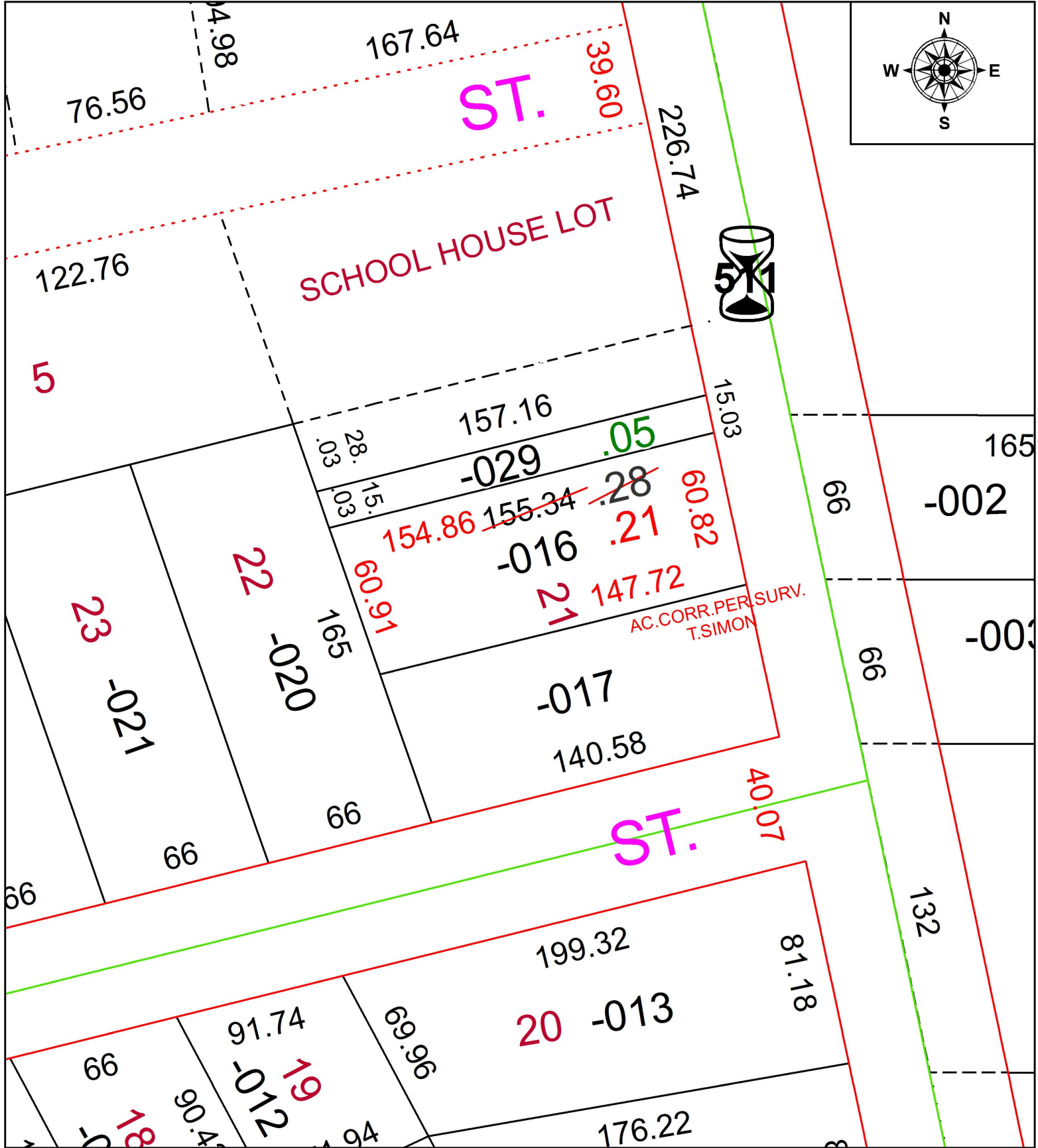


PARENT PARCEL: 20-05-023-105-016

CHILD PARCEL:

STARTING POINT: SOUTHEAST CORNER OF S/L 22

19-04086-D



**SPLITS/DEEDS PROCESSED**

LORAIN COUNTY TAX MAP DEPARTMENT  
226 MIDDLE AVE. ELYRIA, OH

SURVEYED BY: THOMAS A. SIMON

CLOSURE: 1: 272,072

MAP PAGE(S): 20-05-023

APPROVED BY: RRM DATE: 5-8-19

SCALE: 1" = 50 PRIOR INSTRUMENT: 20170640201