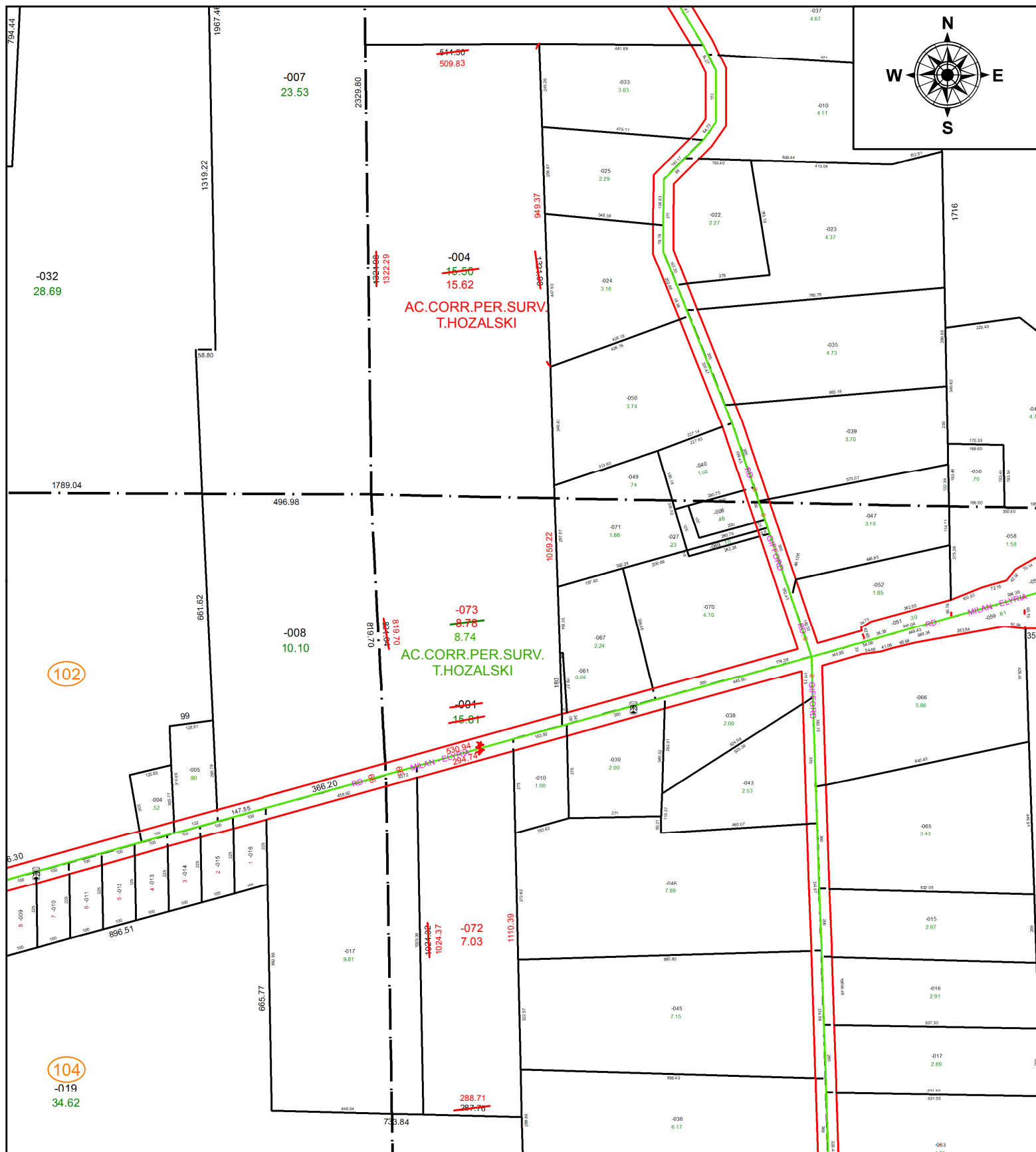


PARENT PARCEL: 08-00-086-000-004, 08-00-091-000-001

CHILD PARCEL: 08-00-086-000-004, 08-00-091-000-072, -073

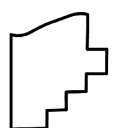
STARTING POINT: INTERSECTION OF C/L OF GIFFORD RD. AND C/L OF ST. RT. 113

20-04085



102

104



SPLITS/DEEDS PROCESSED
 LORAIN COUNTY TAX MAP DEPARTMENT
 226 MIDDLE AVE. ELYRIA, OH

SURVEYED BY: TIMOTHY D. HOZALSKI
CLOSURE: 1:287,137
MAP PAGE(S): 8-00-091
APPROVED BY: RRM **DATE:** 1-27-20
SCALE: 1" = 375 **PRIOR INSTRUMENT:** 20150536247