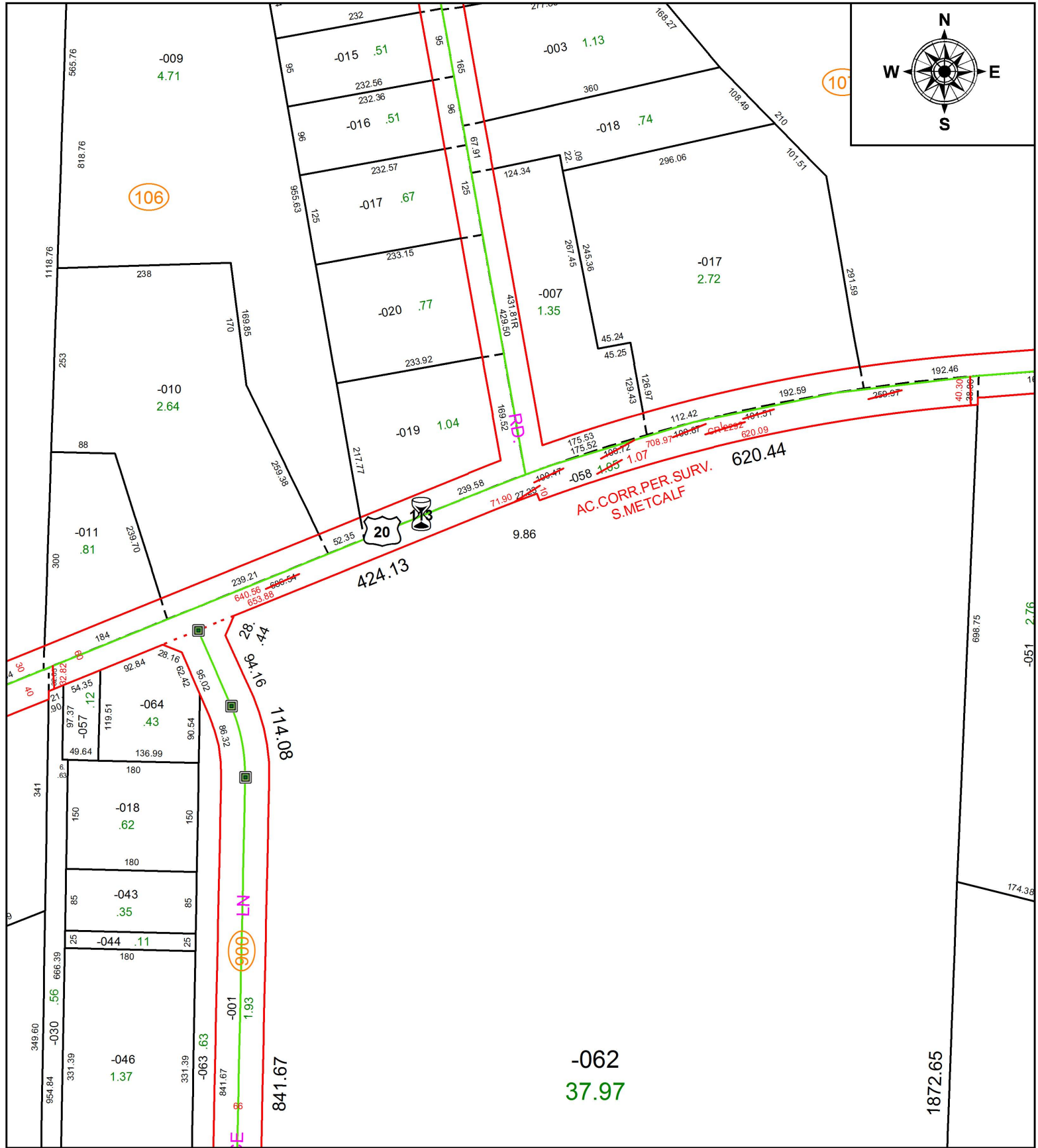


PARENT PARCEL: 07-00-046-108-058

CHILD PARCEL: \_\_\_\_\_

STARTING POINT: INTERSECTION OF C/L OF CENTER RIDGE RD. AND C/L OF FOWLERS RUN

19-04084-D



**SPLITS/DEEDS PROCESSED**  
 LORAIN COUNTY TAX MAP DEPARTMENT  
 226 MIDDLE AVE. ELYRIA, OH

SURVEYED BY: STEVEN J. METCALF

CLOSURE: 1:660,008

MAP PAGE(S): 7-00-046

APPROVED BY: RRM DATE: 5-7-19

SCALE: 1" = 175 PRIOR INSTRUMENT: N/A