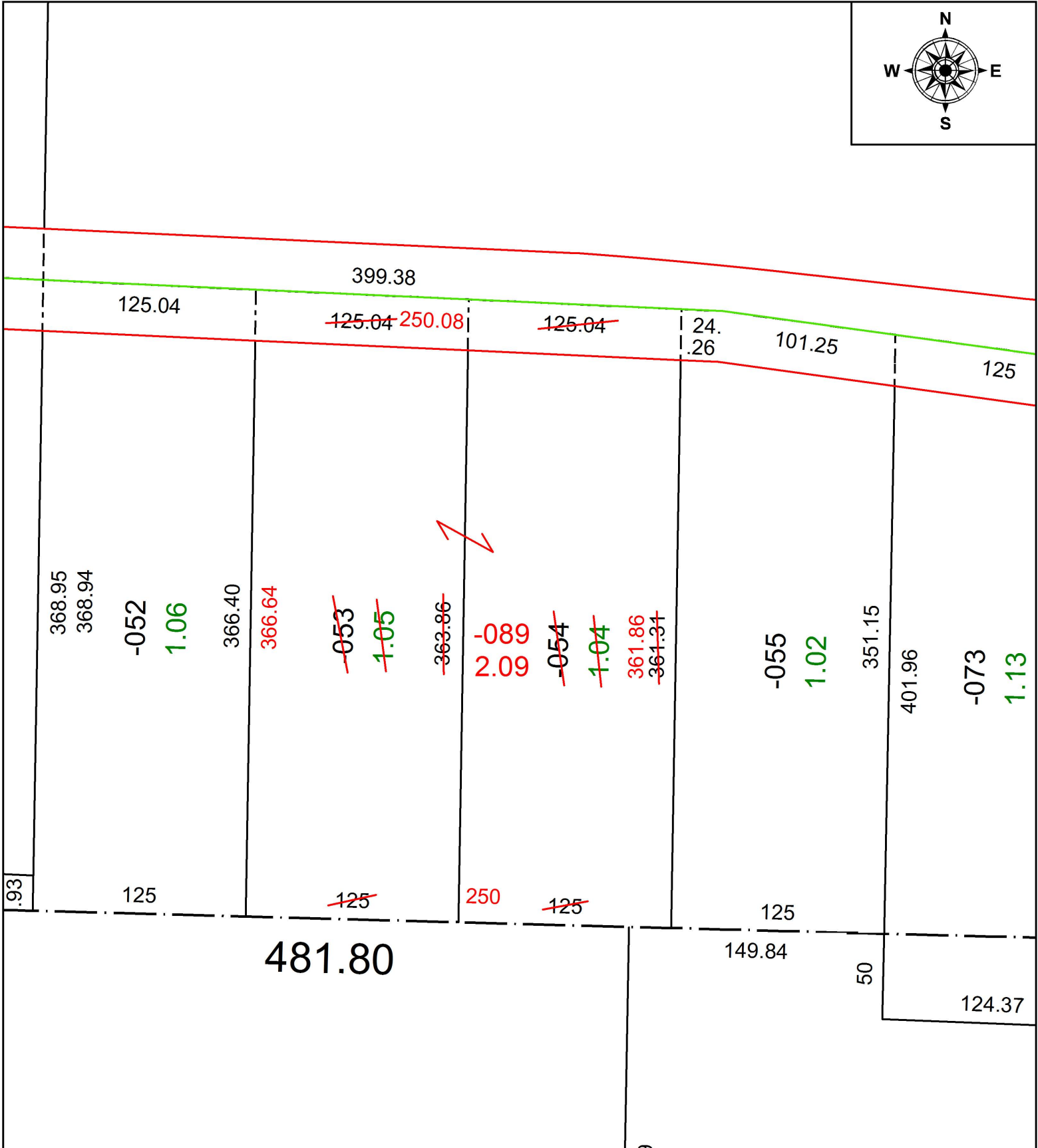


PARENT PARCEL: 05-00-095-000-053, -054

CHILD PARCEL: 05-00-095-000-089

STARTING POINT: INTERSECTION OF C/L OF RICE RD. AND WEST LINE OF O.L.95

20-04079



SPLITS/DEEDS PROCESSED
 LORAIN COUNTY TAX MAP DEPARTMENT
 226 MIDDLE AVE. ELYRIA, OH

SURVEYED BY: TIMOTHY D. HOZALSKI
 CLOSURE: 1: 161,923
 MAP PAGE(S): 5-00-095
 APPROVED BY: RRM DATE: 1-13-20
 SCALE: 1" = 75' PRIOR INSTRUMENT: 20180699030