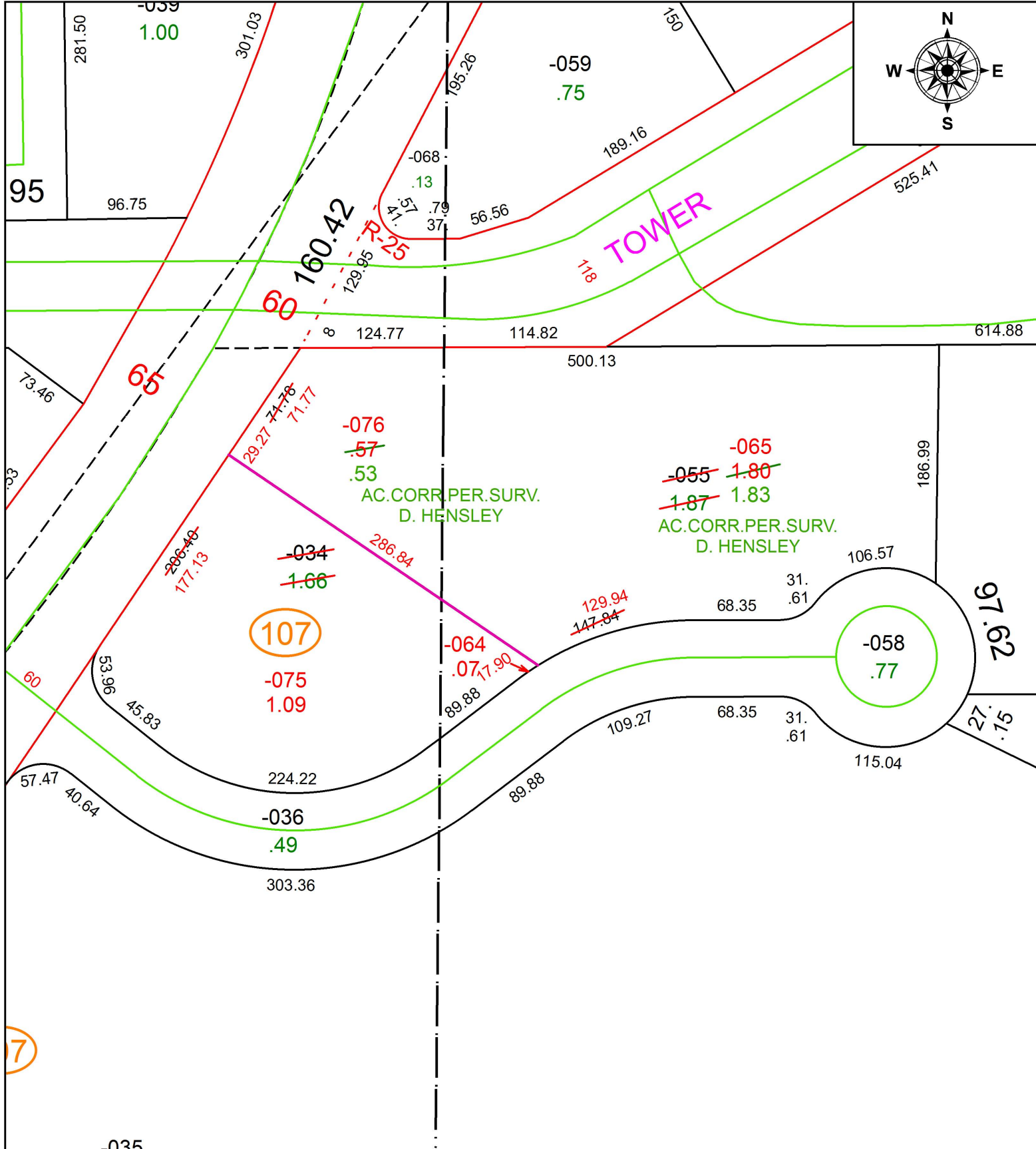


PARENT PARCEL: 02-02-007-101-055, 02-02-008-107-034

CHILD PARCEL: 02-02-007-101-064, -065, 02-02-008-107-075, -076

STARTING POINT: INTERSECTION OF C/L OF LEAVITT RD. AND SOUTH LINE OF O.L.8 TR. 2

20-04076



SPLITS/DEEDS PROCESSED
 LORAIN COUNTY TAX MAP DEPARTMENT
 226 MIDDLE AVE. ELYRIA, OH

SURVEYED BY: DARIUS DAVID HENSLEY
 CLOSURE: 1:275,221
 MAP PAGE(S): 2-02-008
 APPROVED BY: RRM DATE: 1-7-20
 SCALE: 1" = 100 PRIOR INSTRUMENT: 20190726709