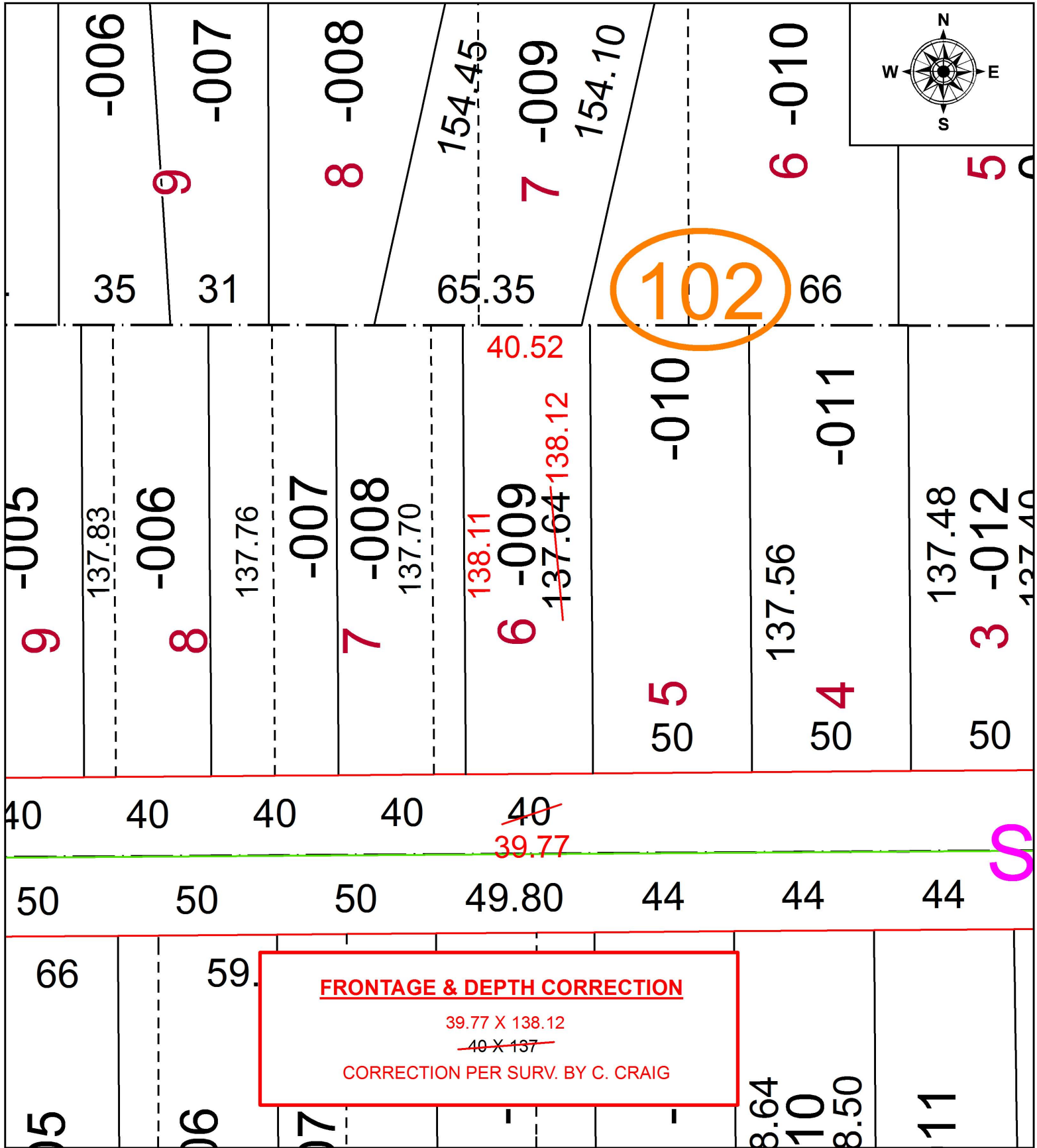


PARENT PARCEL: 06-24-057-000-009

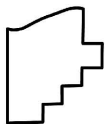
CHILD PARCEL:

STARTING POINT: NORTHWEST CORNER OF S/L 7 IN PEMBER'S ADDITION

19-04072-D



FRONTAGE & DEPTH CORRECTION
 39.77 X 138.12
~~40 X 137~~
 CORRECTION PER SURV. BY C. CRAIG



SPLITS/DEEDS PROCESSED
 LORAIN COUNTY TAX MAP DEPARTMENT
 226 MIDDLE AVE. ELYRIA, OH

SURVEYED BY: CHAD F. CRAIG
 CLOSURE: 1: 95,400
 MAP PAGE(S): 6-24-057
 APPROVED BY: RRM DATE: 4-11-19
 SCALE: 1" = 40' PRIOR INSTRUMENT: 20140493202