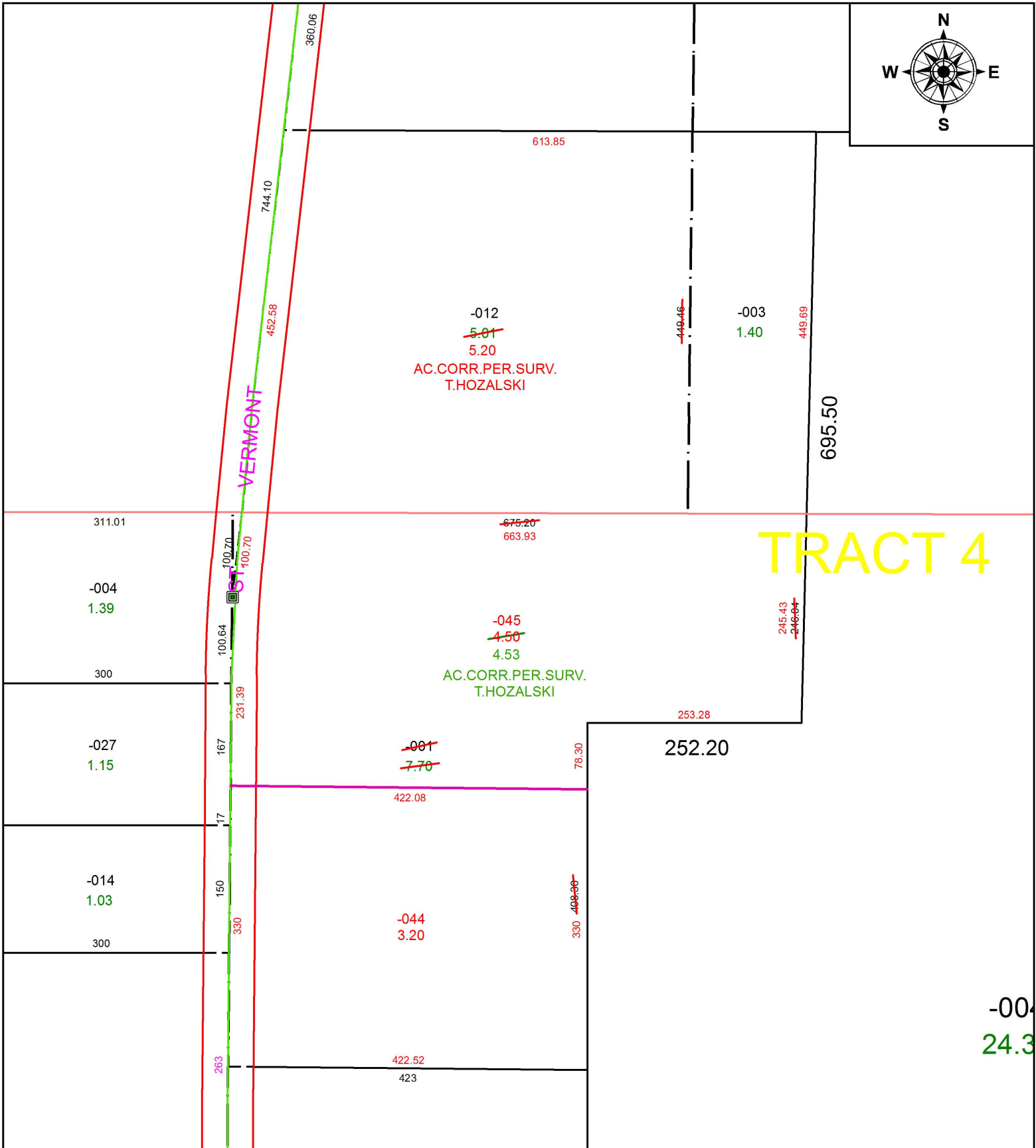


PARENT PARCEL: 19-04-049-000-001, 19-05-046-000-003, 19-05-047-000-012

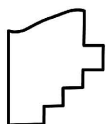
CHILD PARCEL: 19-04-049-000-044, -045, 19-05-046-000-003, 19-05-047-000-012

STARTING POINT: INTERSECTION OF C/L OF VERMONT ST. AND SOUTH LINE OF O.L.47 TR.5

19-04071



TRACT 4



SPLITS/DEEDS PROCESSED
LORAIN COUNTY TAX MAP DEPARTMENT
226 MIDDLE AVE. ELYRIA, OH

SURVEYED BY: TIMOTHY D. HOZALSKI

CLOSURE: 1:786,004

MAP PAGE(S): 12-20-19

APPROVED BY: RRM DATE: 12-20-19

SCALE: 1" = 150 PRIOR INSTRUMENT: 20180690840