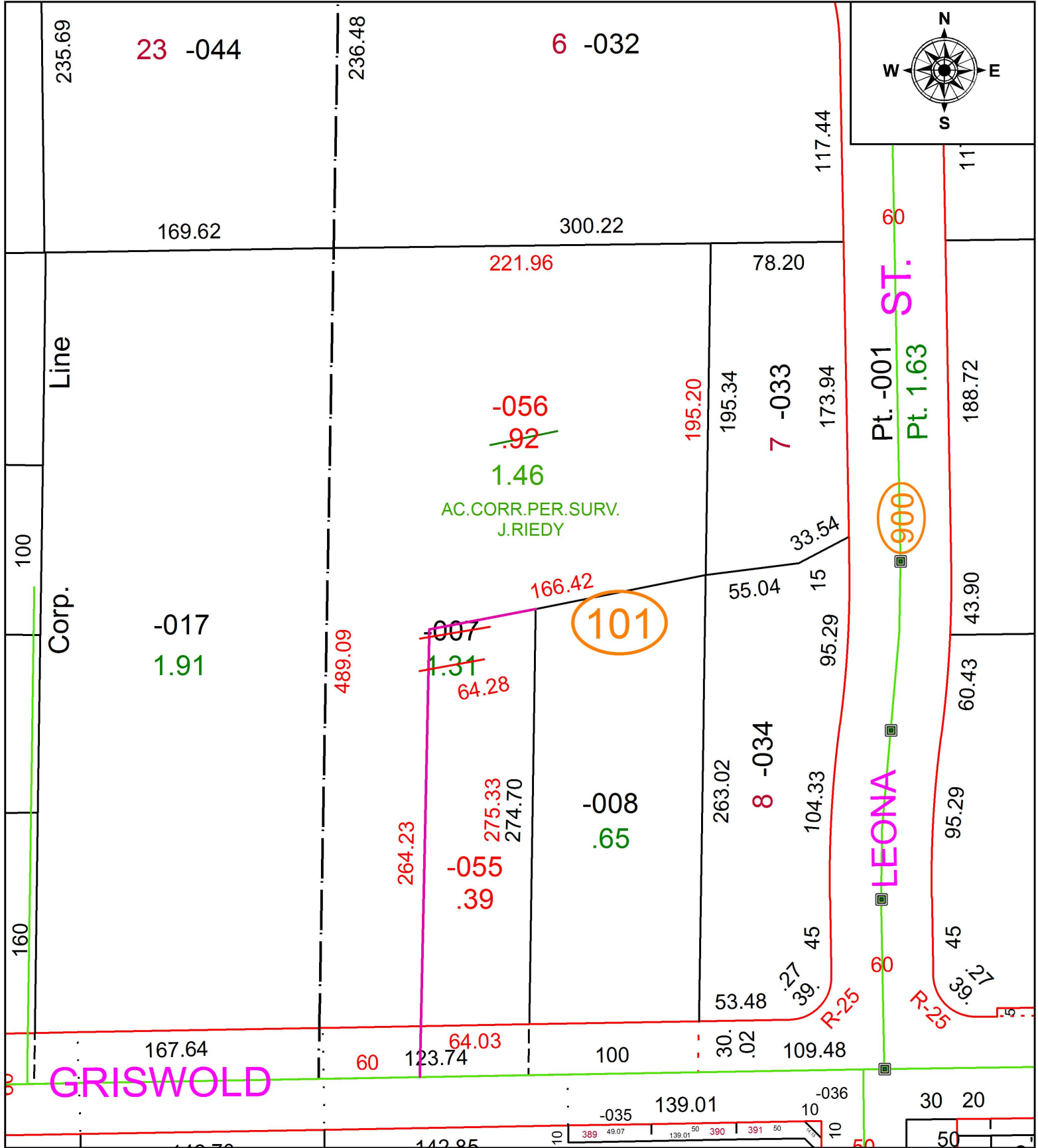


PARENT PARCEL: 06-23-016-101-007

CHILD PARCEL: 06-23-016-101-055, -056

STARTING POINT: INTERSECTION OF C/L OF GRISWOLD RD. AND C/L OF LEONA ST.

19-04069



**SPLITS/DEEDS PROCESSED**  
 LORAIN COUNTY TAX MAP DEPARTMENT  
 226 MIDDLE AVE. ELYRIA, OH

**SURVEYED BY:** JOSHUA S. RIEDY  
**CLOSURE:** 1:52,784  
**MAP PAGE(S):** 6-23-016  
**APPROVED BY:** RRM **DATE:** 12-19-19  
**SCALE:** 1" = 75' **PRIOR INSTRUMENT:** 20160592999