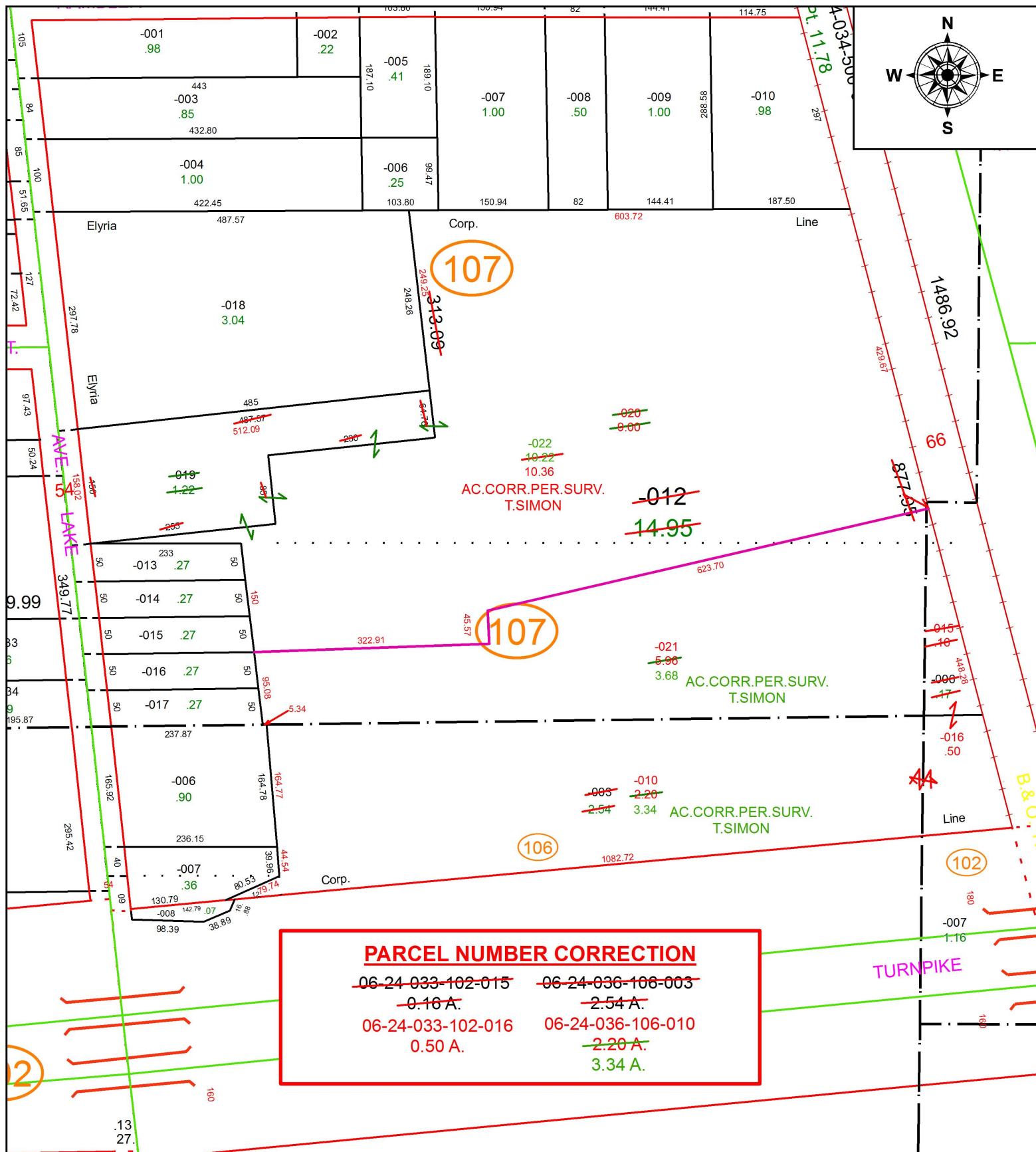


PARENT PARCEL: 06-24-033-102-006, 06-24-036-106-003, 06-24-037-107-012, -019

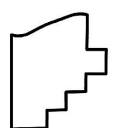
CHILD PARCEL: 06-24-033-102-015, -016, 06-24-036-106-010, 06-24-037-107-020 THRU -022

STARTING POINT: INTERSECTION OF C/L OF LAKE AVE. AND C/L OF ADELBERT ST.

19-04068



PARCEL NUMBER CORRECTION	
06-24-033-102-015	06-24-036-106-003
0.16 A.	2.54 A.
06-24-033-102-016	06-24-036-106-010
0.50 A.	2.20 A.
	3.34 A.



SPLITS/DEEDS PROCESSED
 LORAIN COUNTY TAX MAP DEPARTMENT
 226 MIDDLE AVE. ELYRIA, OH

SURVEYED BY: THOMAS A. SIMON
CLOSURE: 1:344,687
MAP PAGE(S): 6-24-037
APPROVED BY: RRM **DATE:** 12-17-19
SCALE: 1" = 175 **PRIOR INSTRUMENT:** 20190700272