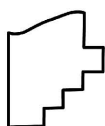
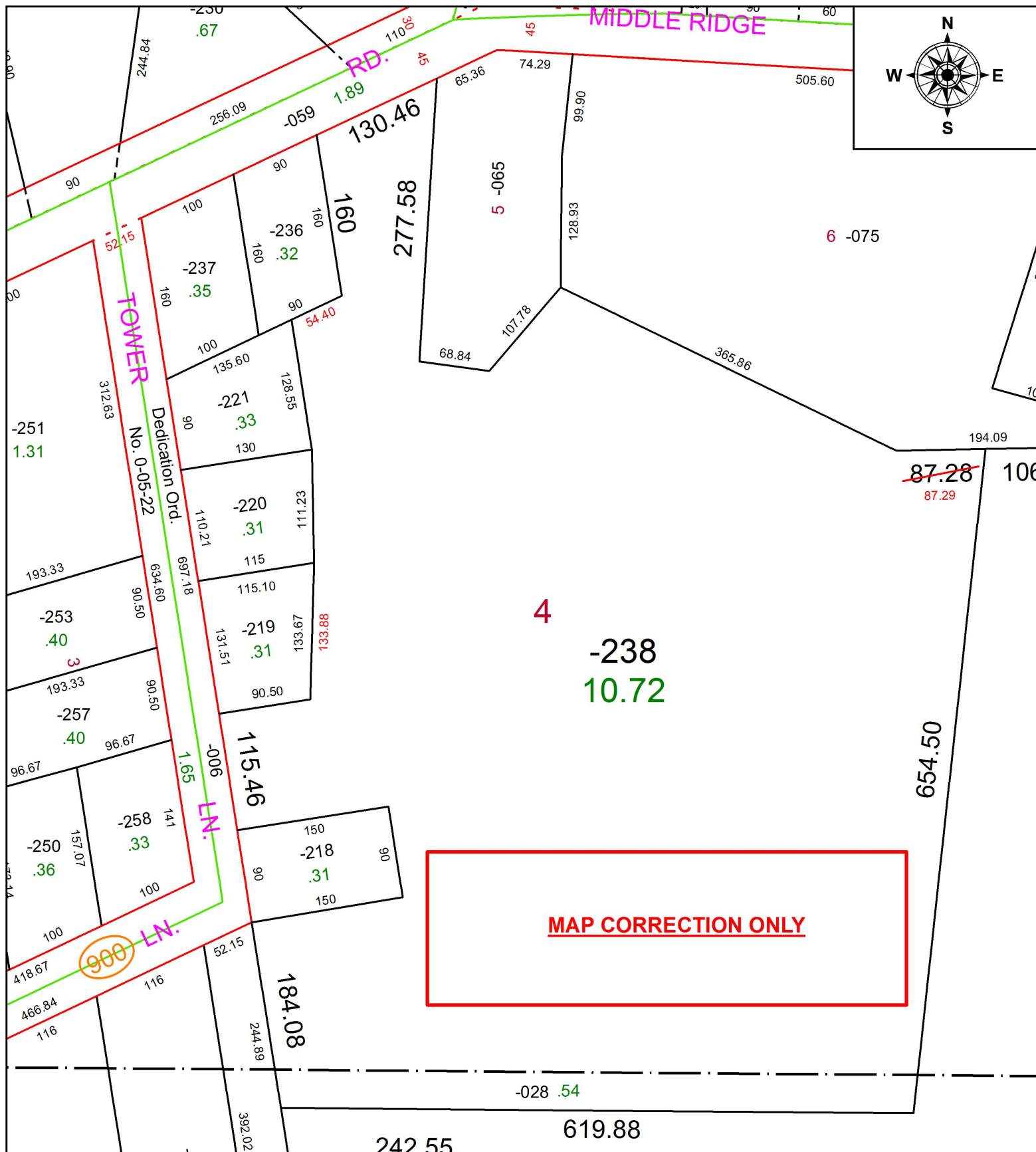


PARENT PARCEL: 05-00-006-000-238, 05-00-007-000-028

CHILD PARCEL:

STARTING POINT: INTERSECTION OF EAST LINE OF TOWER LN. AND SOUTH LINE OF MIDDLE RIDGE RD.

19-04068-D



SPLITS/DEEDS PROCESSED
 LORAIN COUNTY TAX MAP DEPARTMENT
 226 MIDDLE AVE. ELYRIA, OH

SURVEYED BY: PHILLIP ROSEBECK
 CLOSURE: 1: 32,124
 MAP PAGE(S): 5-00-006
 APPROVED BY: RRM DATE: 4-5-19
 SCALE: 1" = 125 PRIOR INSTRUMENT: 19910148418