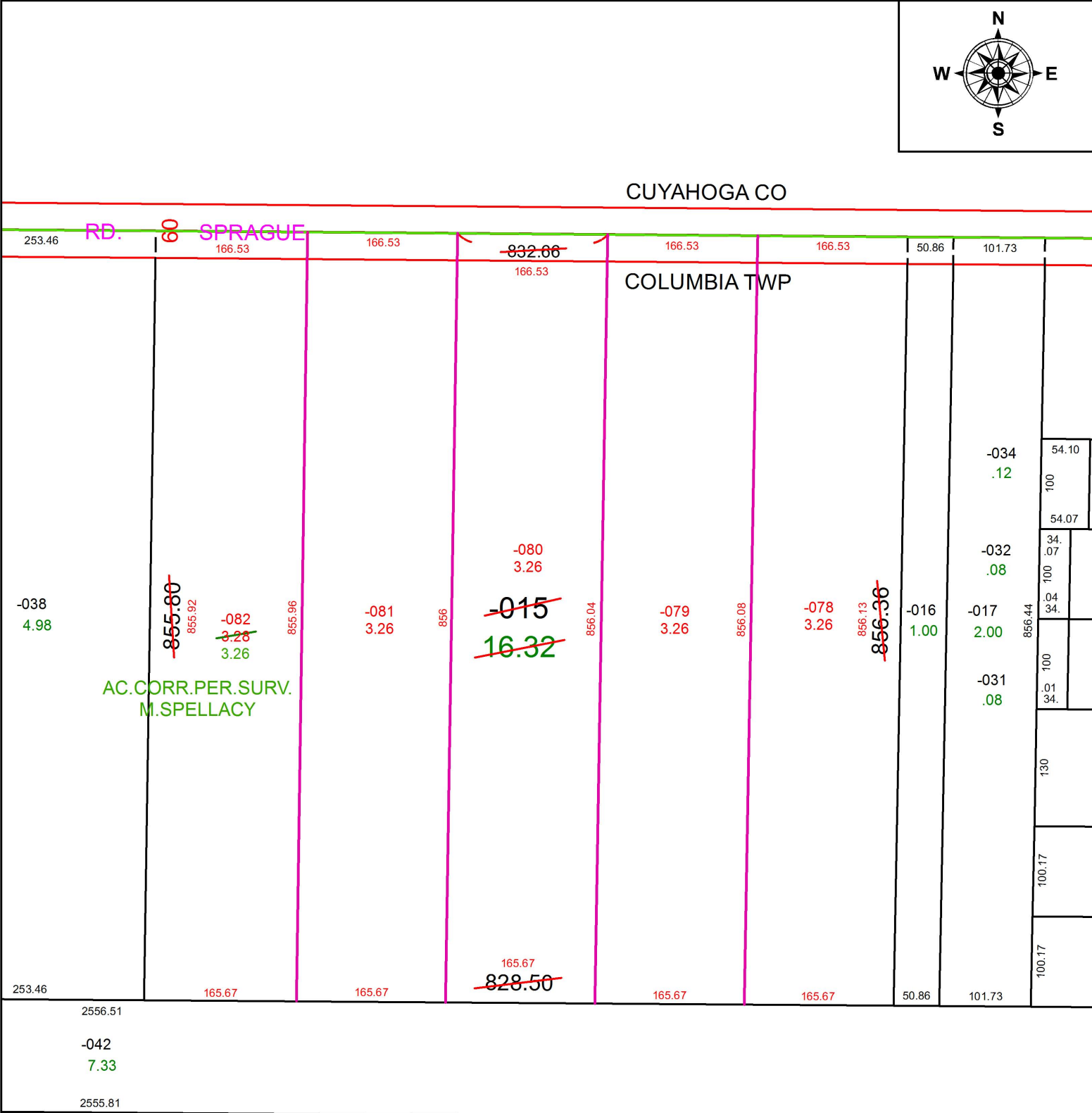
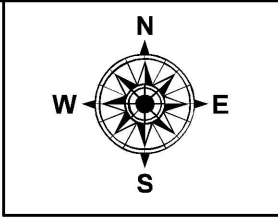


PARENT PARCEL: 12-00-080-000-015  
 CHILD PARCEL: 12-00-080-000-078 THRU -082  
 STARTING POINT: INTERSECTION OF GLENCOVE TRL. AND C/L OF STATION RD.

19-04066



2556.51  
 -042  
 7.33  
 2555.81

**SPLITS/DEEDS PROCESSED**  
 LORAIN COUNTY TAX MAP DEPARTMENT  
 226 MIDDLE AVE. ELYRIA, OH

SURVEYED BY: MICHAEL P. SPELLACY  
 CLOSURE: 1:283,246  
 MAP PAGE(S): 12-00-080  
 APPROVED BY: RRM DATE: 12-13-19  
 SCALE: 1" = 150 PRIOR INSTRUMENT: 20180685690