

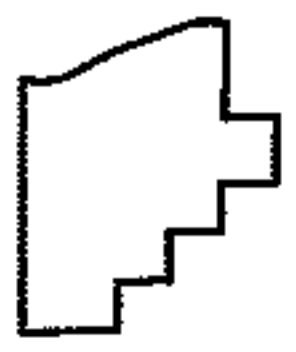
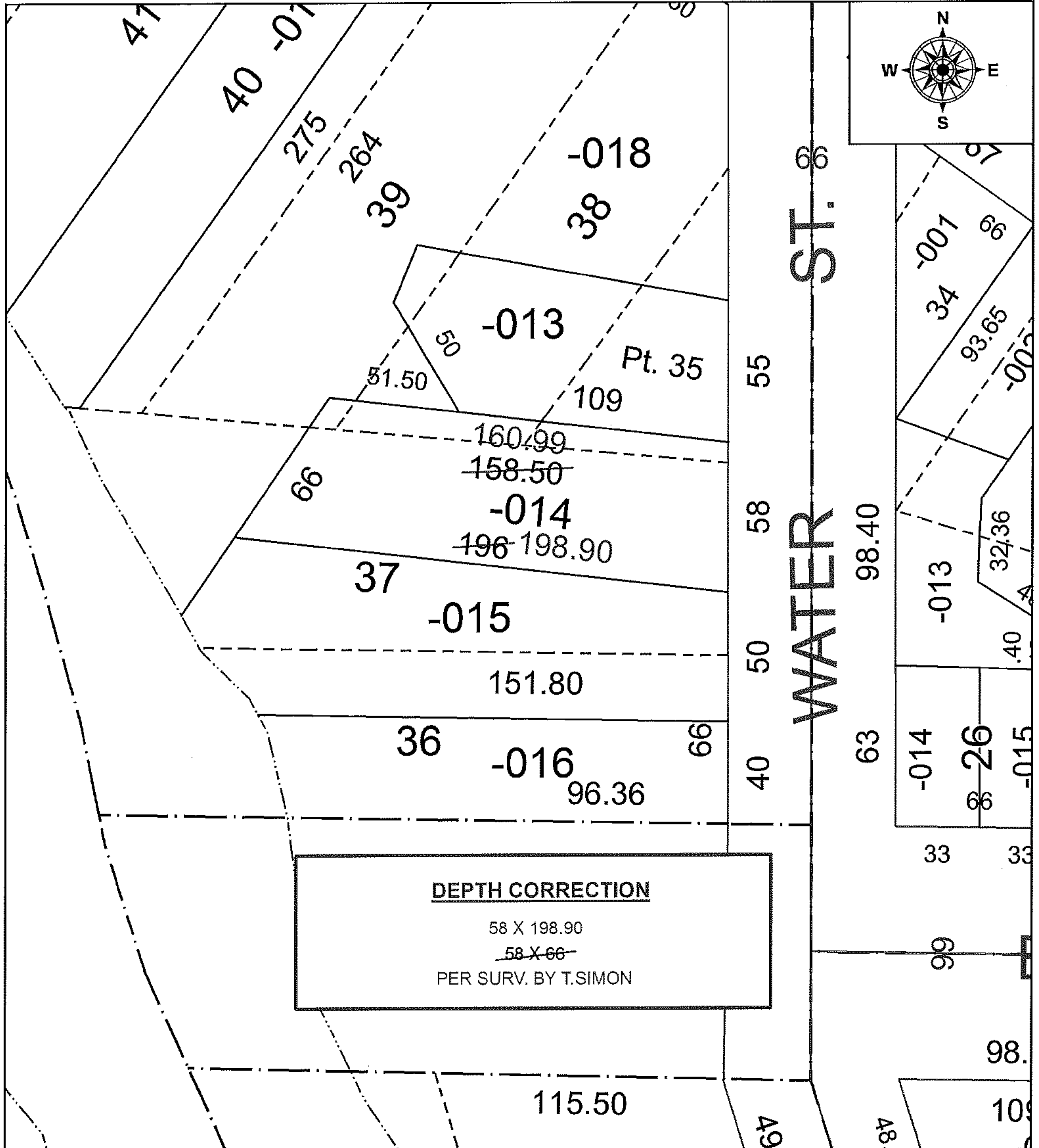
PARENT PARCEL: 06-26-069-000-014

19-04065-D

CHILD PARCEL:

INTERSECTION OF C/L OF WATER ST. AND C/L OF WEST BRIDGE ST.

STARTING POINT:



SPLITS/DEEDS PROCESSED
 LORAIN COUNTY TAX MAP DEPARTMENT
 226 MIDDLE AVE. ELYRIA, OH

SURVEYED BY: THOMAS A. SIMON
 CLOSURE: 1:221,957
 MAP PAGE(S): 6-26-069
 APPROVED BY: RRM DATE: 3-29-19
 SCALE: 1" = 50 PRIOR INSTRUMENT: 20180669998