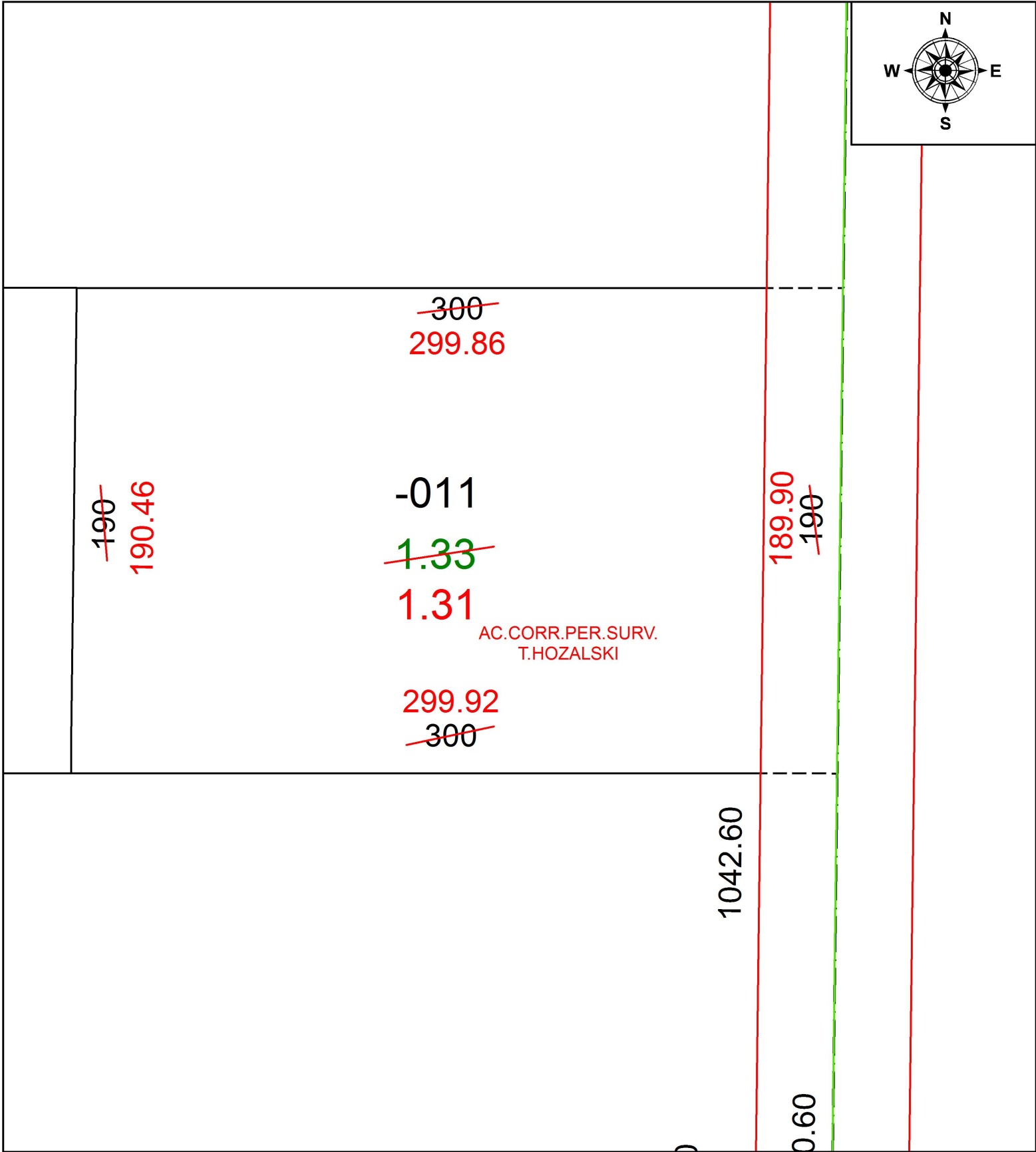


PARENT PARCEL: 16-00-089-000-011

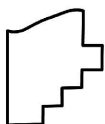
CHILD PARCEL:

STARTING POINT: NORTHEAST CORNER OF O.L.89

19-04064-D



AC. CORR. PER. SURV.  
T. HOZALSKI



**SPLITS/DEEDS PROCESSED**  
LORAIN COUNTY TAX MAP DEPARTMENT  
226 MIDDLE AVE. ELYRIA, OH

SURVEYED BY: TIMOTHY D. HOZALSKI

CLOSURE: 1: 221,848

MAP PAGE(S): 16-00-089

APPROVED BY: RRM DATE: 12-21-18

SCALE: 1" = 50 PRIOR INSTRUMENT: 20060171203