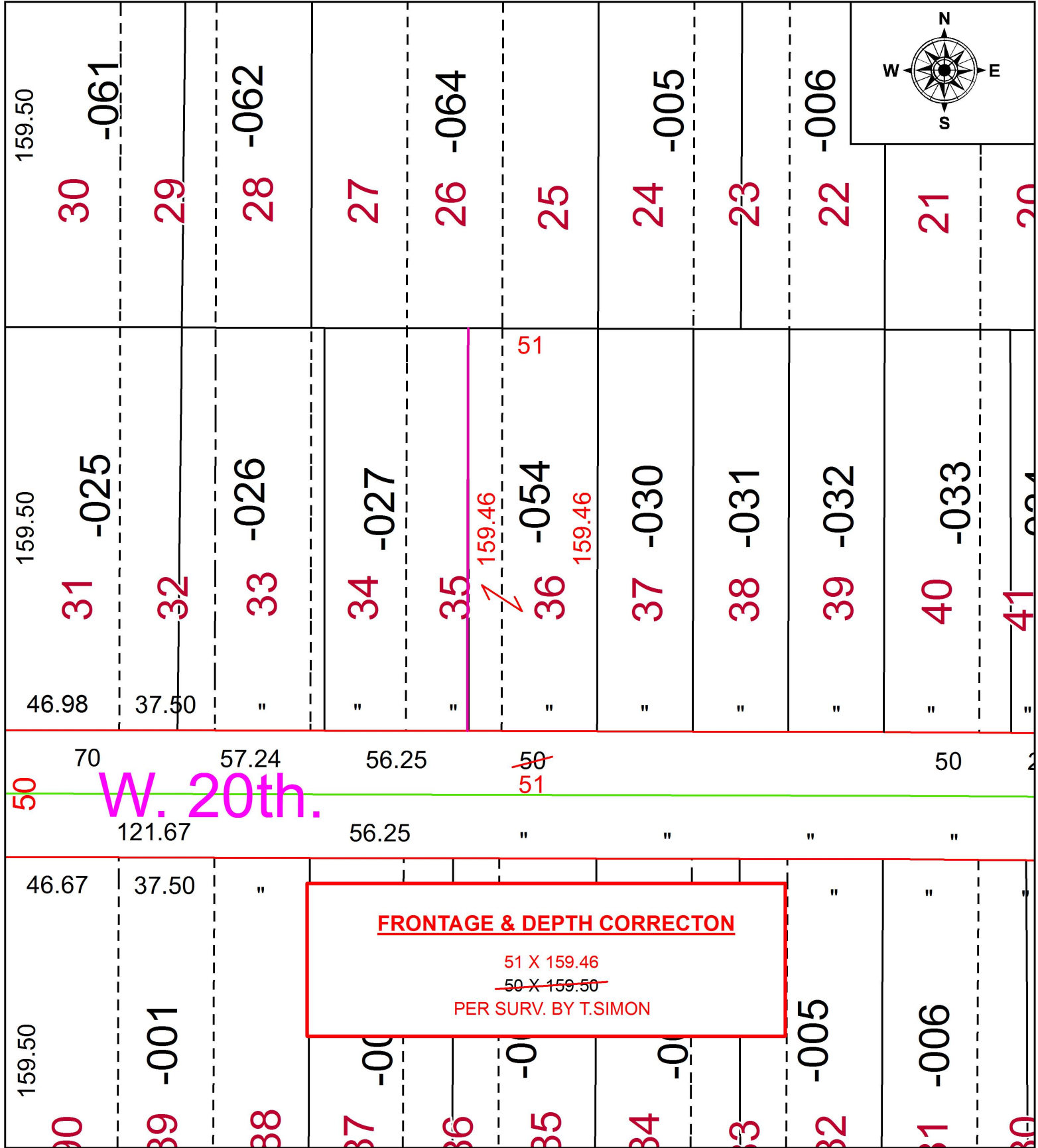


PARENT PARCEL: 02-02-024-115-054

CHILD PARCEL:

STARTING POINT: SOUTHWEST CORNER OF S/L 37 IN POLE & REEVES CITY ACRES ADD.

19-04063-D



W. 20th.

**FRONTAGE & DEPTH CORRECTON**

51 X 159.46  
~~50 X 159.50~~  
 PER SURV. BY T.SIMON



**SPLITS/DEEDS PROCESSED**  
 LORAIN COUNTY TAX MAP DEPARTMENT  
 226 MIDDLE AVE. ELYRIA, OH

SURVEYED BY: THOMAS A. SIMON  
 CLOSURE: 1:2147483648  
 MAP PAGE(S): 2-02-024  
 APPROVED BY: RRM DATE: 3-22-19  
 SCALE: 1" = 50 PRIOR INSTRUMENT: DV 1224/105