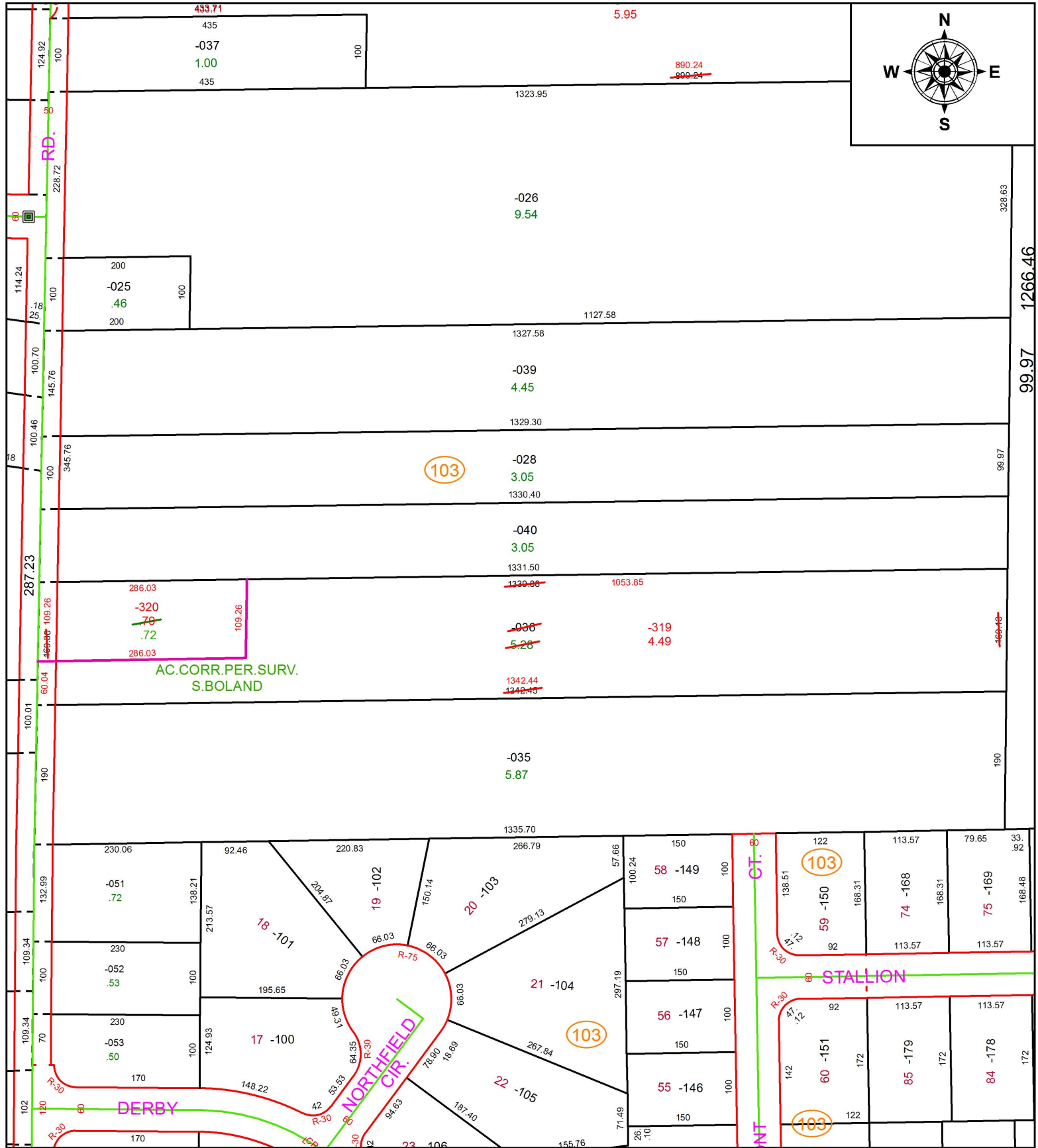
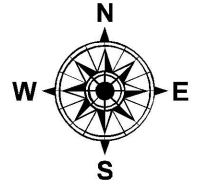


PARENT PARCEL: 04-00-001-103-036

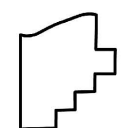
CHILD PARCEL: 04-00-001-103-319, -320

STARTING POINT: INTERSECTION OF C/L OF CASE RD. AND SOUTH LINE OF SEC. 1

19-04062



AC.CORR.PER.SURV.
S.BOLAND



SPLITS/DEEDS PROCESSED
LORAIN COUNTY TAX MAP DEPARTMENT
226 MIDDLE AVE. ELYRIA, OH

SURVEYED BY: SEAN A. BOLAND
CLOSURE: 1:830,132
MAP PAGE(S): 4-00-001
APPROVED BY: RRM DATE: 12-9-19
SCALE: 1" = 175 PRIOR INSTRUMENT: 20170647922