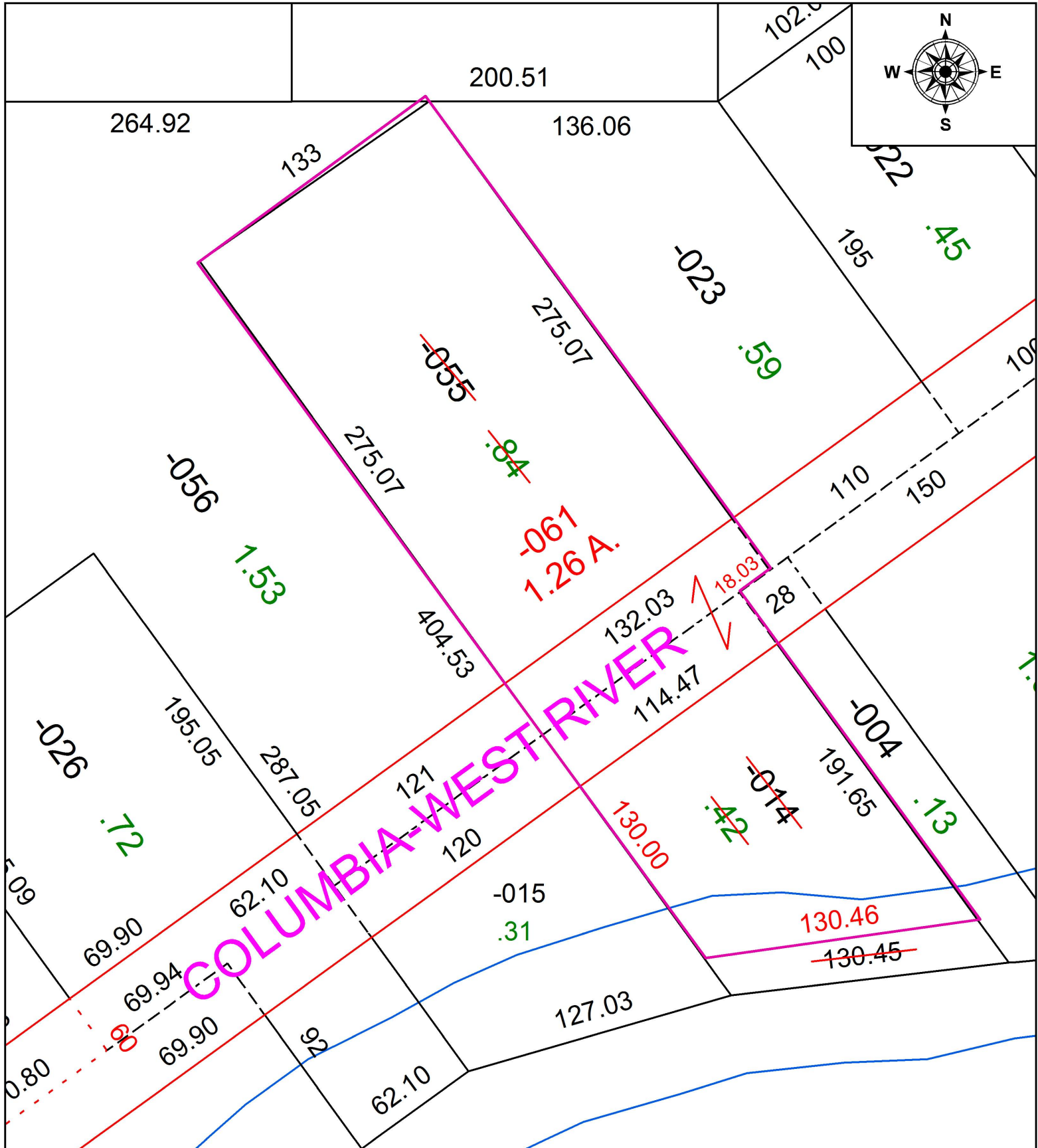


PARENT PARCEL: 12-00-040-101-055 & 12-00-040-102-014 COMBINATION

CHILD PARCEL: 12-00-040-101-061

STARTING POINT: CL OF RIVERVIEW DR. & CL OF WEST RIVER RD.

19-04062-C



**SPLITS/DEEDS PROCESSED**  
 LORAIN COUNTY TAX MAP DEPARTMENT  
 226 MIDDLE AVE. ELYRIA, OH

SURVEYED BY: JOHN R. ALBAN  
 CLOSURE: 1:304,490  
 MAP PAGE(S): 12-00-040  
 APPROVED BY: TJS DATE: 3/21/19  
 SCALE: 1" = 60' PRIOR INSTRUMENT: 2008-0243394