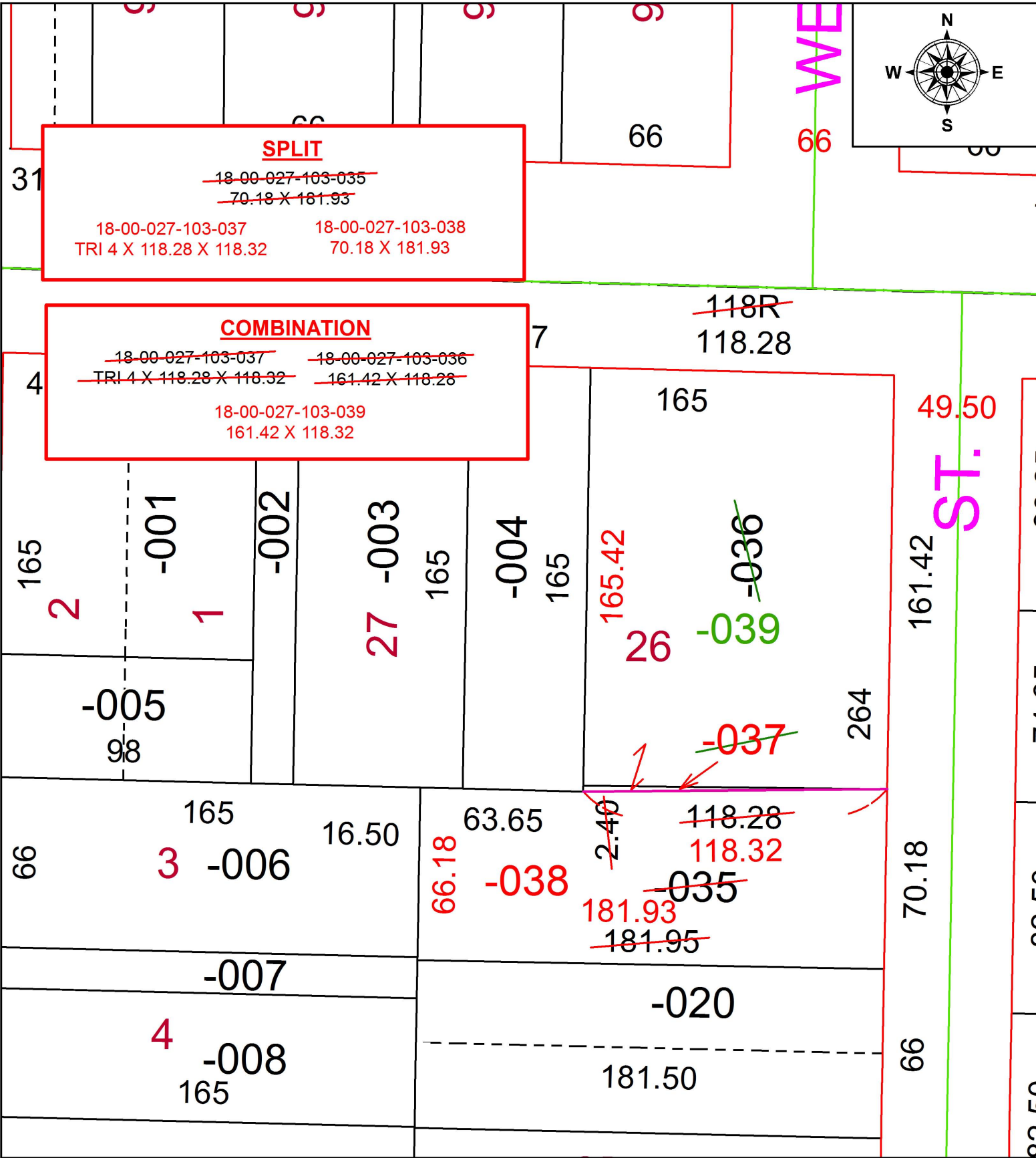
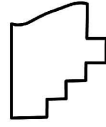


PARENT PARCEL: 18-00-027-103-035, -036
 CHILD PARCEL: 18-00-027-103-037 THRU -039
 STARTING POINT: INTERSECTION OF SOUTH LINE OF W, HERRICK ST. AND WEST LINE OF BENNETT ST.

19-04061



 **SPLITS/DEEDS PROCESSED**
 LORAIN COUNTY TAX MAP DEPARTMENT
 226 MIDDLE AVE. ELYRIA, OH

SURVEYED BY: THOMAS A. SIMON
 CLOSURE: 1:65,400
 MAP PAGE(S): 18-00-027
 APPROVED BY: RRM DATE: 12-6-19
 SCALE: 1" = 50' PRIOR INSTRUMENT: 20030890079