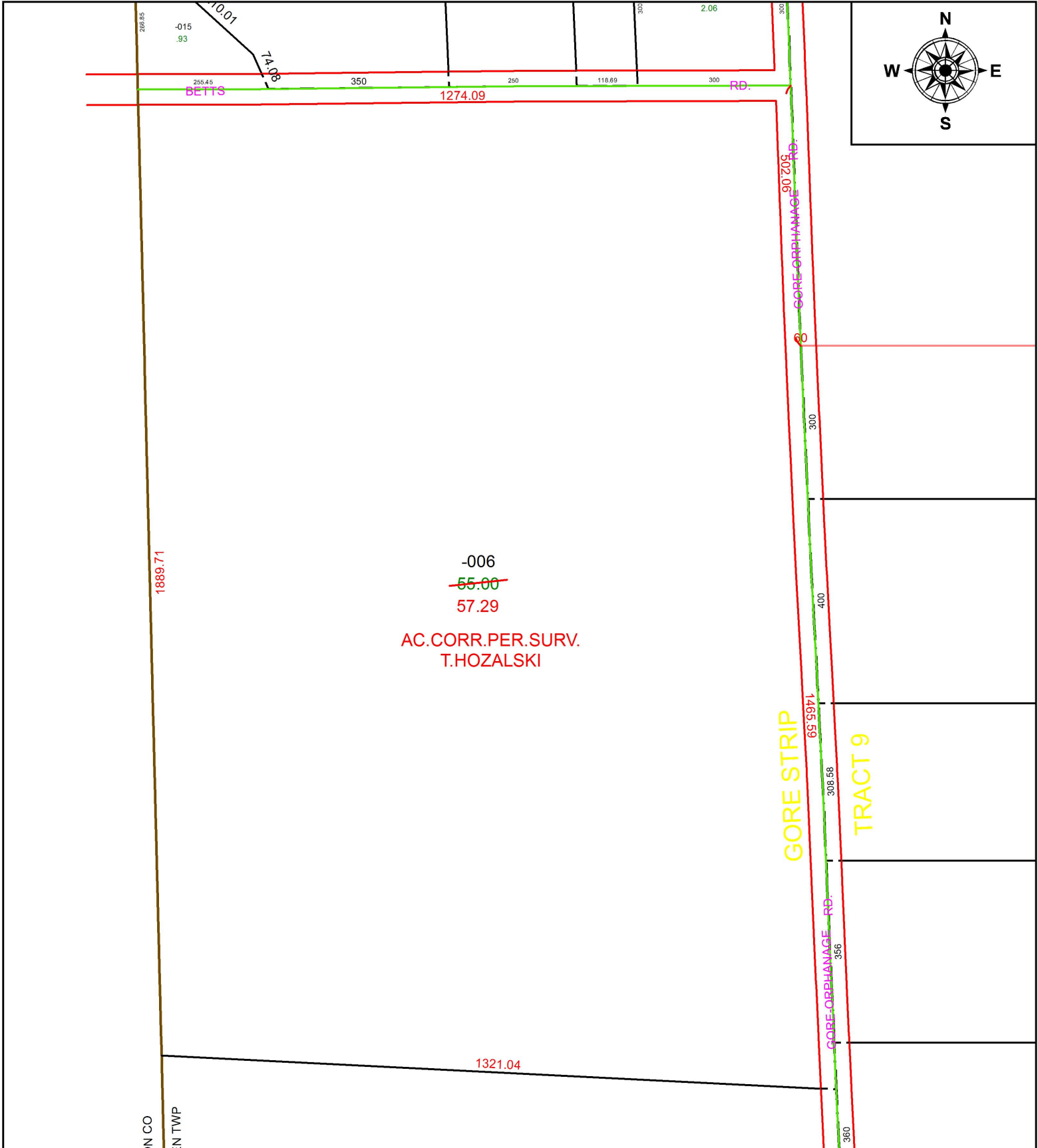


PARENT PARCEL: 13-20-019-000-006

CHILD PARCEL:

STARTING POINT: INTERSECTION OF C/L OF BETTS RD. AND C/L OF GORE ORPHANAGE RD.

19-04061-C



SPLITS/DEEDS PROCESSED
 LORAIN COUNTY TAX MAP DEPARTMENT
 226 MIDDLE AVE. ELYRIA, OH

SURVEYED BY: TIMOTHY D. HOZALSKI

CLOSURE: 1:655,692

MAP PAGE(S): 13-20-019

APPROVED BY: RRM DATE: 3-21-19

SCALE: 1" = 250 PRIOR INSTRUMENT: 20170629714