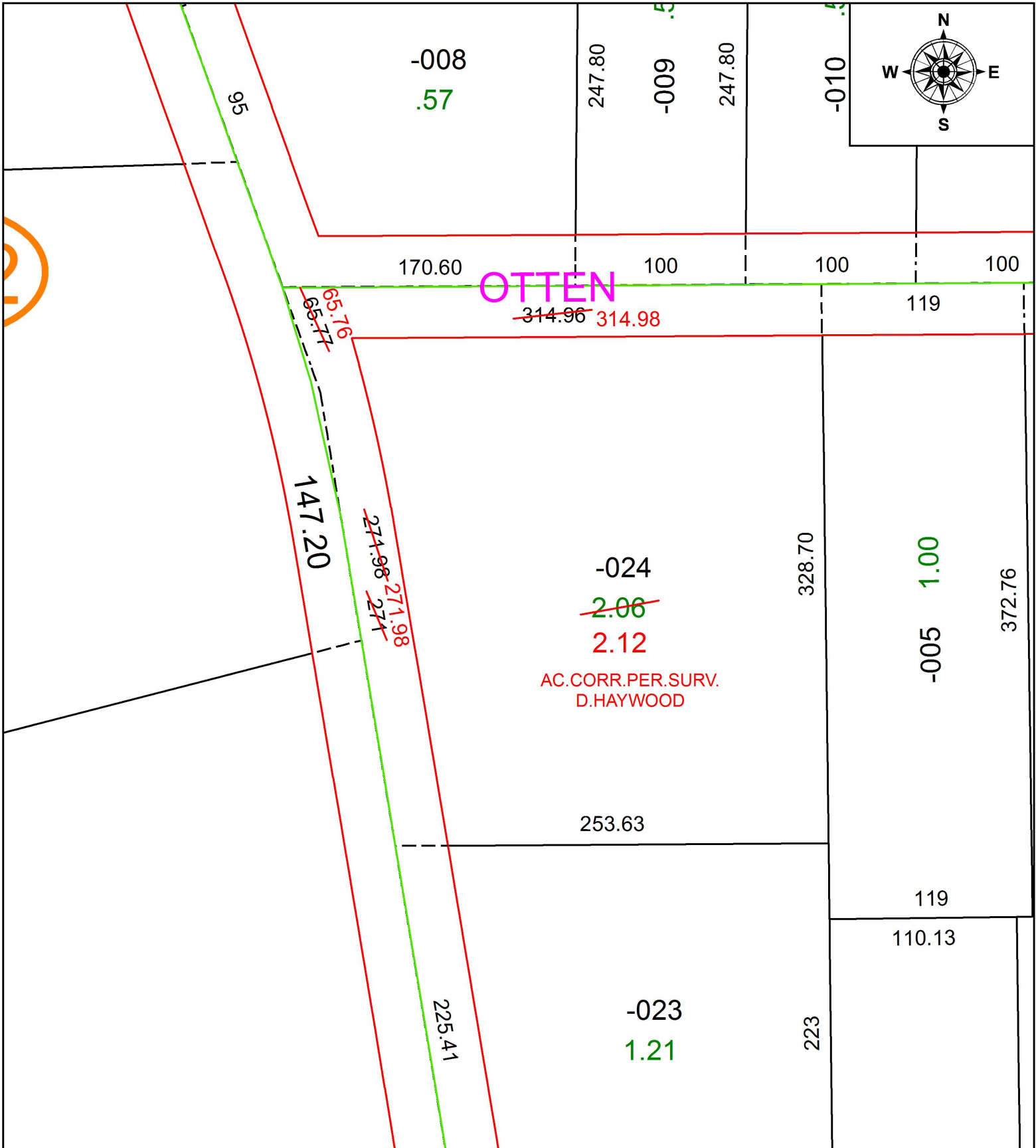


PARENT PARCEL: 07-00-044-104-024

CHILD PARCEL:

STARTING POINT: INTERSECTION OF C/L OF OTTEN RD. AND C/L OF CASE RD.

19-04059-C



SPLITS/DEEDS PROCESSED
LORAIN COUNTY TAX MAP DEPARTMENT
226 MIDDLE AVE. ELYRIA, OH

SURVEYED BY: DALE R. HAYWOOD
 CLOSURE: 1:441,909
 MAP PAGE(S): 7-00-044
 APPROVED BY: RRM DATE: 3-15-19
 SCALE: 1" = 75' PRIOR INSTRUMENT: 20160612905