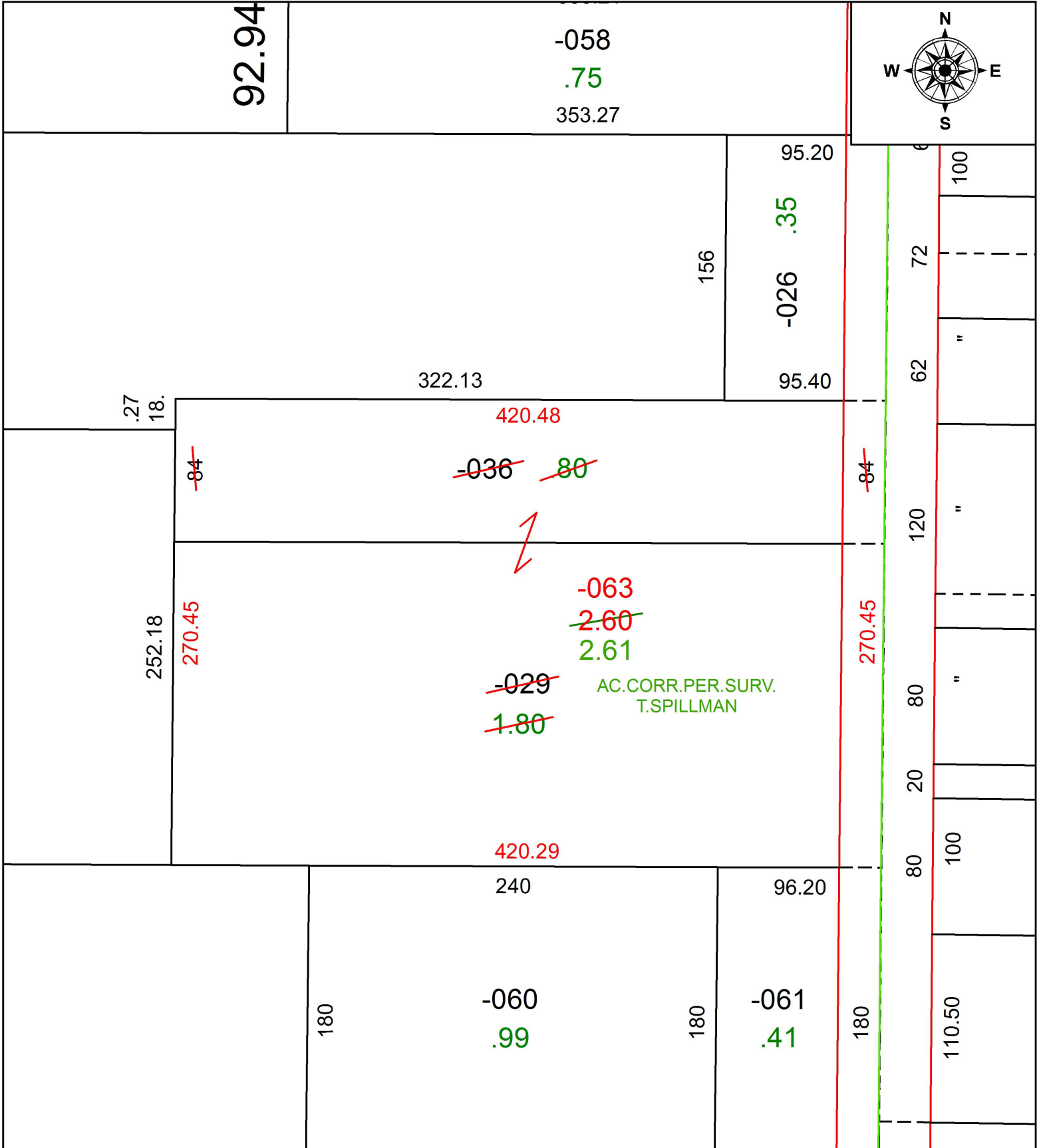


PARENT PARCEL: 09-00-004-101-029, -036

CHILD PARCEL: 09-00-004-101-063

STARTING POINT: INTERSECTION OF C/L OF ANNIS RD. AND NORTH LINE OF O.L.4

19-04055



SPLITS/DEEDS PROCESSED
 LORAIN COUNTY TAX MAP DEPARTMENT
 226 MIDDLE AVE. ELYRIA, OH

SURVEYED BY: THEODORE J. SPILLMAN

CLOSURE: 1: 198,264

MAP PAGE(S): 9-00-004

APPROVED BY: RRM DATE: 11-25-19

SCALE: 1" = 75 PRIOR INSTRUMENT: 20150557787