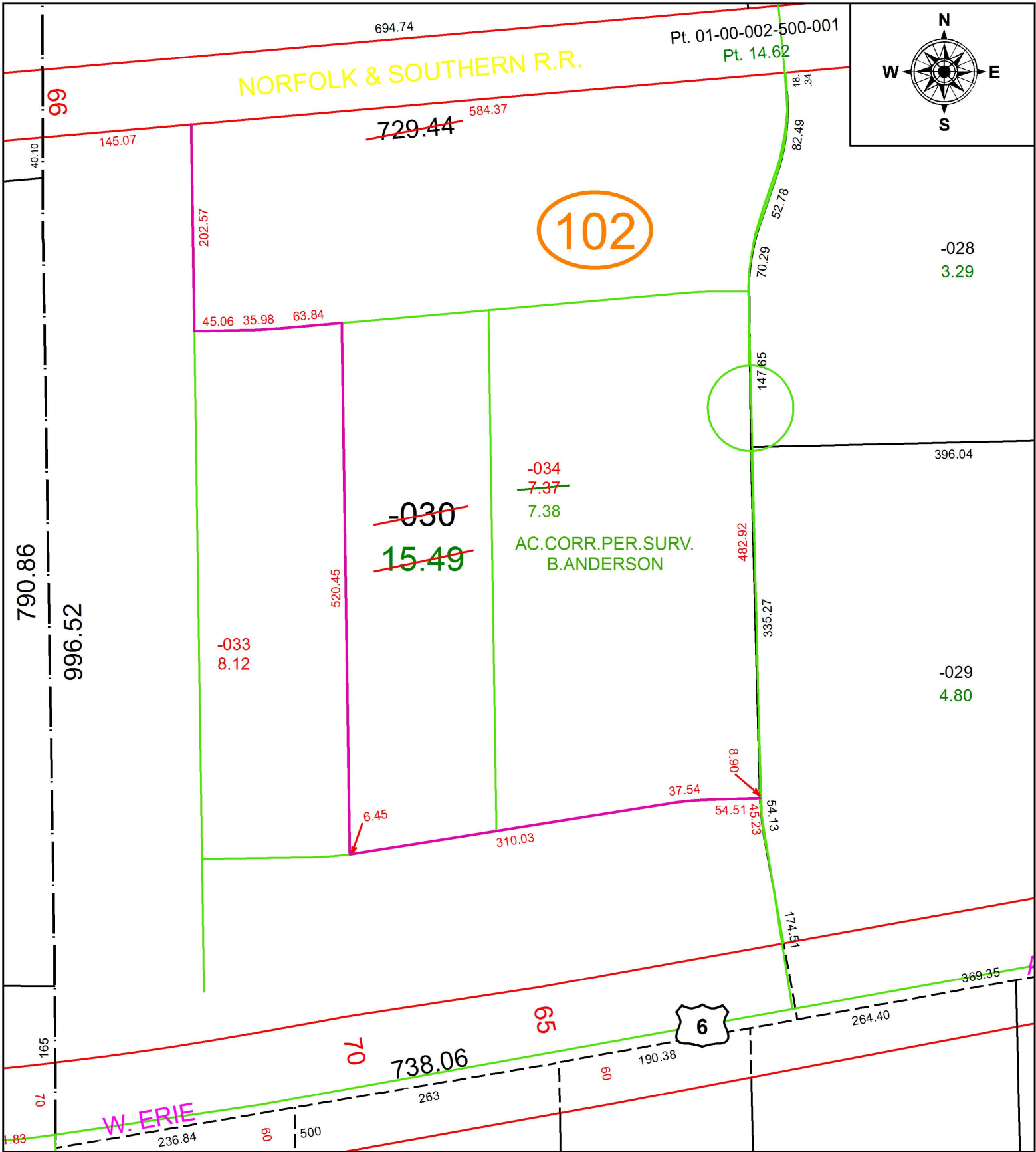


PARENT PARCEL: 01-00-005-102-030

CHILD PARCEL: 01-00-005-102-033, -034

STARTING POINT: INTERSECTION OF C/L OF LIBERTY AVE. AND WEST LINE OF O.L.5

19-04048



SPLITS/DEEDS PROCESSED
 LORAIN COUNTY TAX MAP DEPARTMENT
 226 MIDDLE AVE. ELYRIA, OH

SURVEYED BY: BRENT D. ANDERSON
 CLOSURE: 1:416,995
 MAP PAGE(S): 1-00-005
 APPROVED BY: RRM DATE: 11-15-19
 SCALE: 1" = 125 PRIOR INSTRUMENT: 20160593486