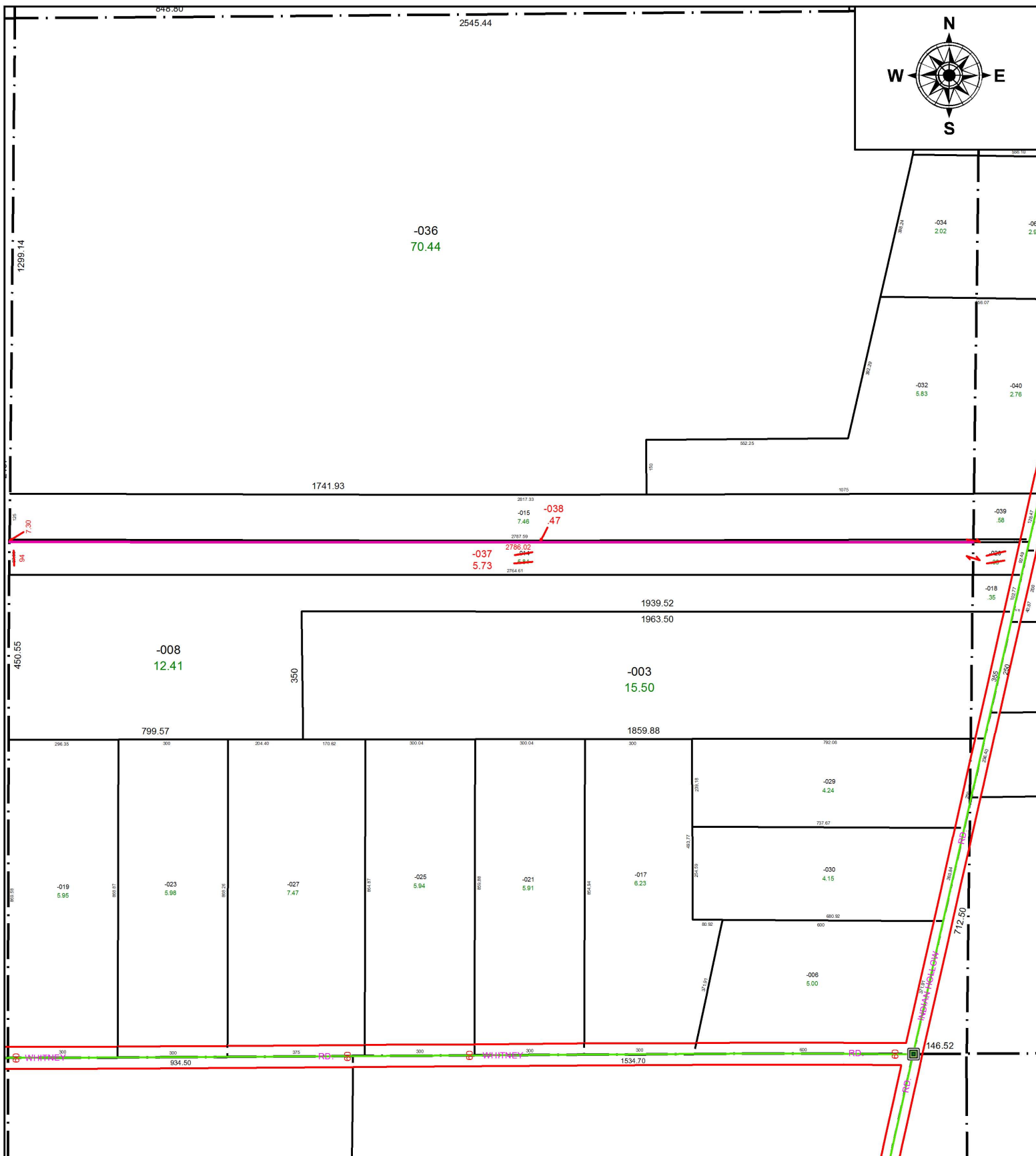


PARENT PARCEL: 15-00-068-000-014, 15-00-069-000-020

CHILD PARCEL: 15-00-068-000-037, -038

STARTING POINT: NORTHEAST CORNER OF LAND CONVEYED TO LEONARD & DOROTHY WESTRICK (DV 403/381)

19-04048-U



SPLITS/DEEDS PROCESSED
 LORAIN COUNTY TAX MAP DEPARTMENT
 226 MIDDLE AVE. ELYRIA, OH

SURVEYED BY: C.E. PENFOUND
 CLOSURE: 1: 1,620,929
 MAP PAGE(S): 15-00-068
 APPROVED BY: RRM DATE: 2-20-19
 SCALE: 1" = 350 PRIOR INSTRUMENT: DV 1121/764