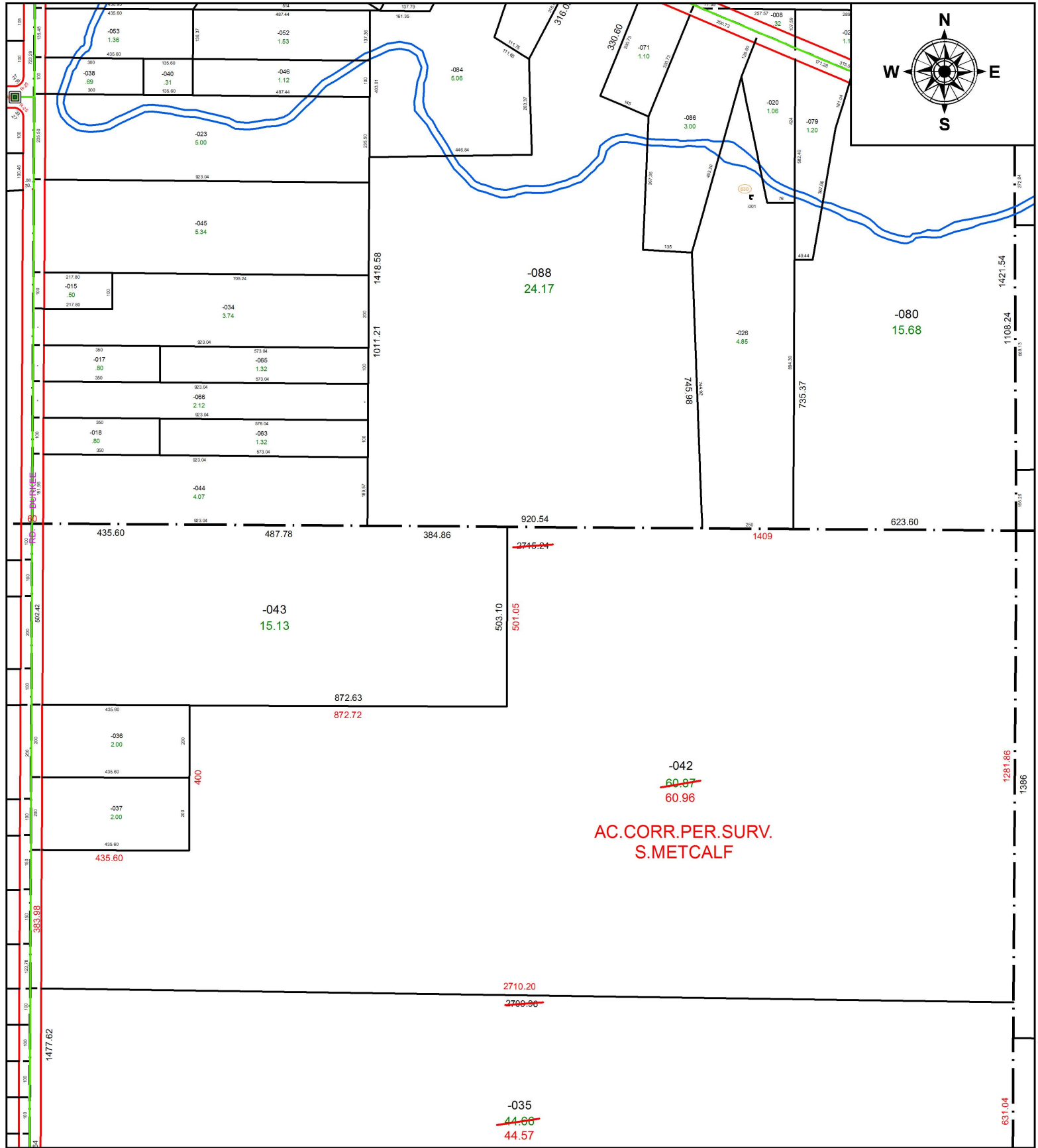


PARENT PARCEL: 11-00-075-000-042

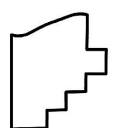
CHILD PARCEL: _____

STARTING POINT: INTERSECTION OF C/L OF S.R.82 AND C/L OF DURKEE RD.

19-04047-D



AC. CORR. PER. SURV.
S. METCALF



SPLITS/DEEDS PROCESSED
LORAIN COUNTY TAX MAP DEPARTMENT
226 MIDDLE AVE. ELYRIA, OH

SURVEYED BY: STEVEN J. METCALF
 CLOSURE: 1:934,396
 MAP PAGE(S): 11-00-075
 APPROVED BY: RRM DATE: 2-14-19
 SCALE: 1" = 350 PRIOR INSTRUMENT: 20190703334