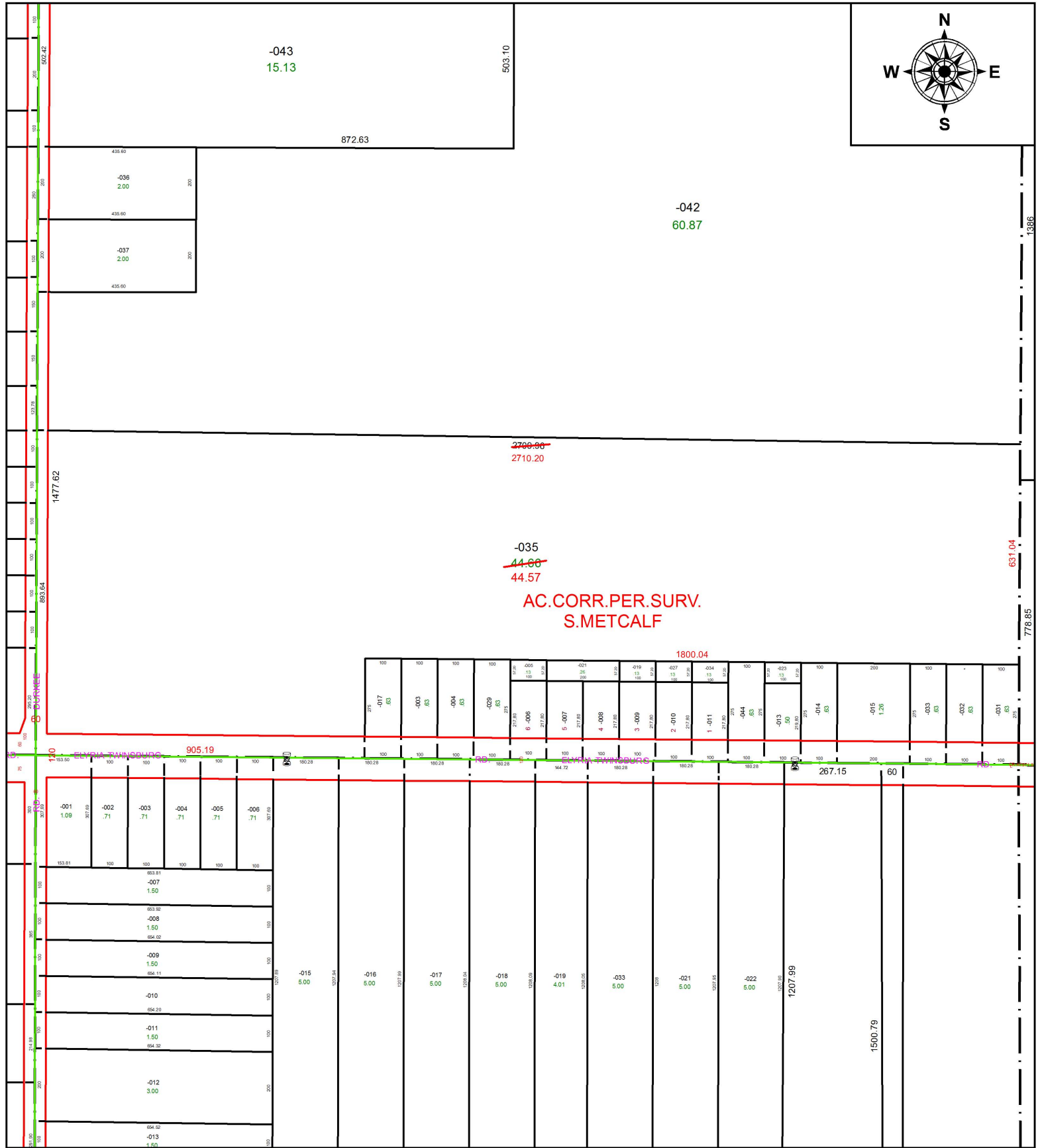
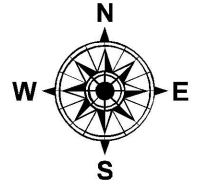


PARENT PARCEL: 11-00-075-000-035

CHILD PARCEL:

STARTING POINT: INTERSECTION OF C/L OF S.R.82 AND C/L OF DURKEE RD.

19-04046-D



SPLITS/DEEDS PROCESSED
LORAIN COUNTY TAX MAP DEPARTMENT
226 MIDDLE AVE. ELYRIA, OH

SURVEYED BY: STEVEN J. METCALF

CLOSURE: 1: 1,239,100

MAP PAGE(S): 11-00-075

APPROVED BY: RRM DATE: 2-14-19

SCALE: 1" = 350 PRIOR INSTRUMENT: 20160596540