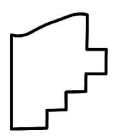
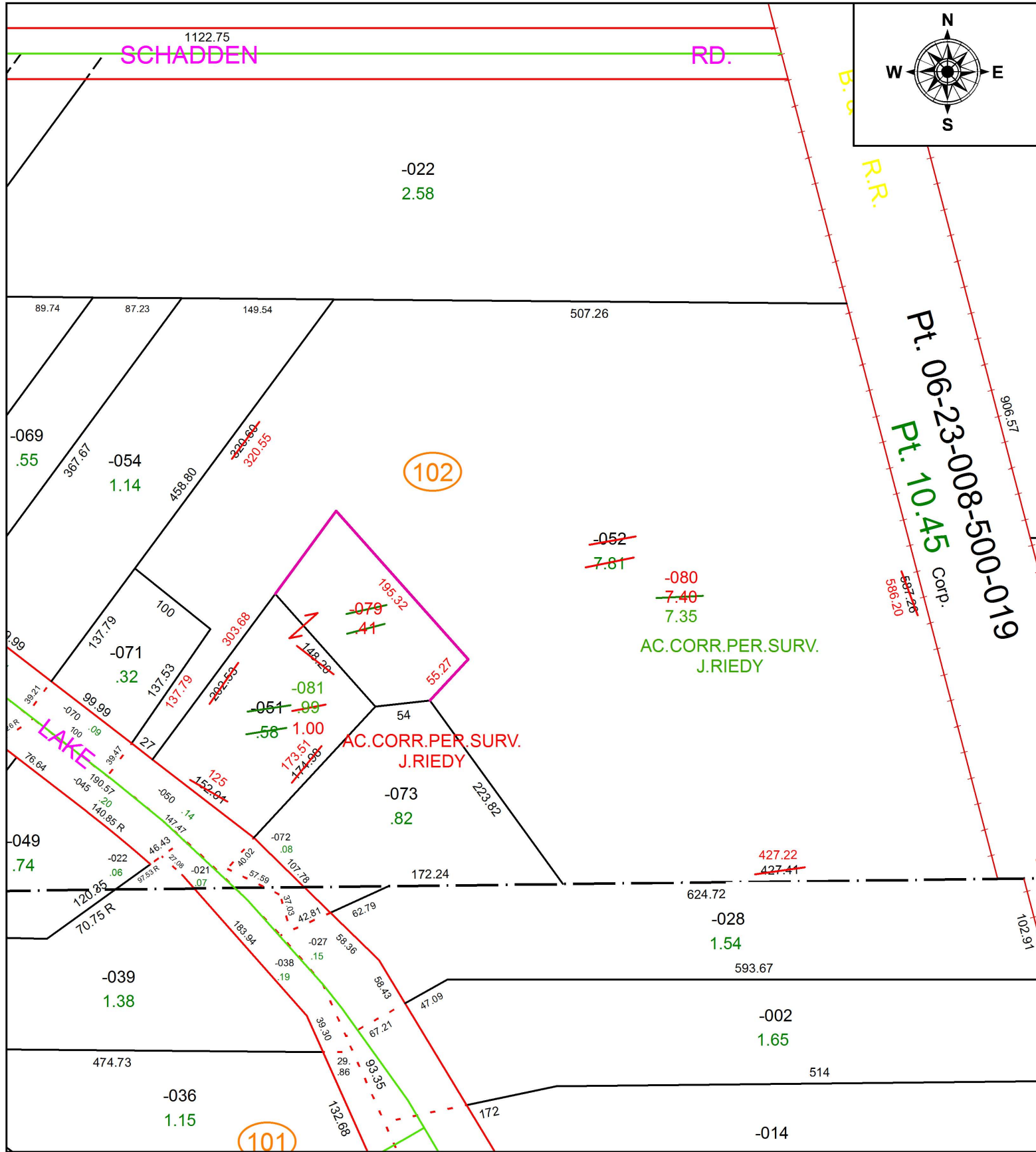
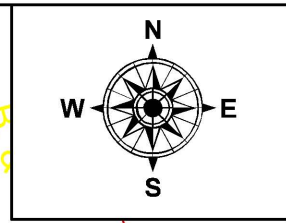


PARENT PARCEL: 06-23-009-102-051, -052

CHILD PARCEL: 06-23-009-102-079 THRU -081

STARTING POINT: INTERSECTION OF C/L OF LAKE AVE. AND C/L OF SCHADDEN RD.

19-04042



SPLITS/DEEDS PROCESSED
LORAIN COUNTY TAX MAP DEPARTMENT
226 MIDDLE AVE. ELYRIA, OH

SURVEYED BY: JOSHUA S. RIEDY
CLOSURE: 1:203.449
MAP PAGE(S): 6-23-009
APPROVED BY: RRM DATE: 11-6-19
SCALE: 1" = 125 PRIOR INSTRUMENT: OR 160/402