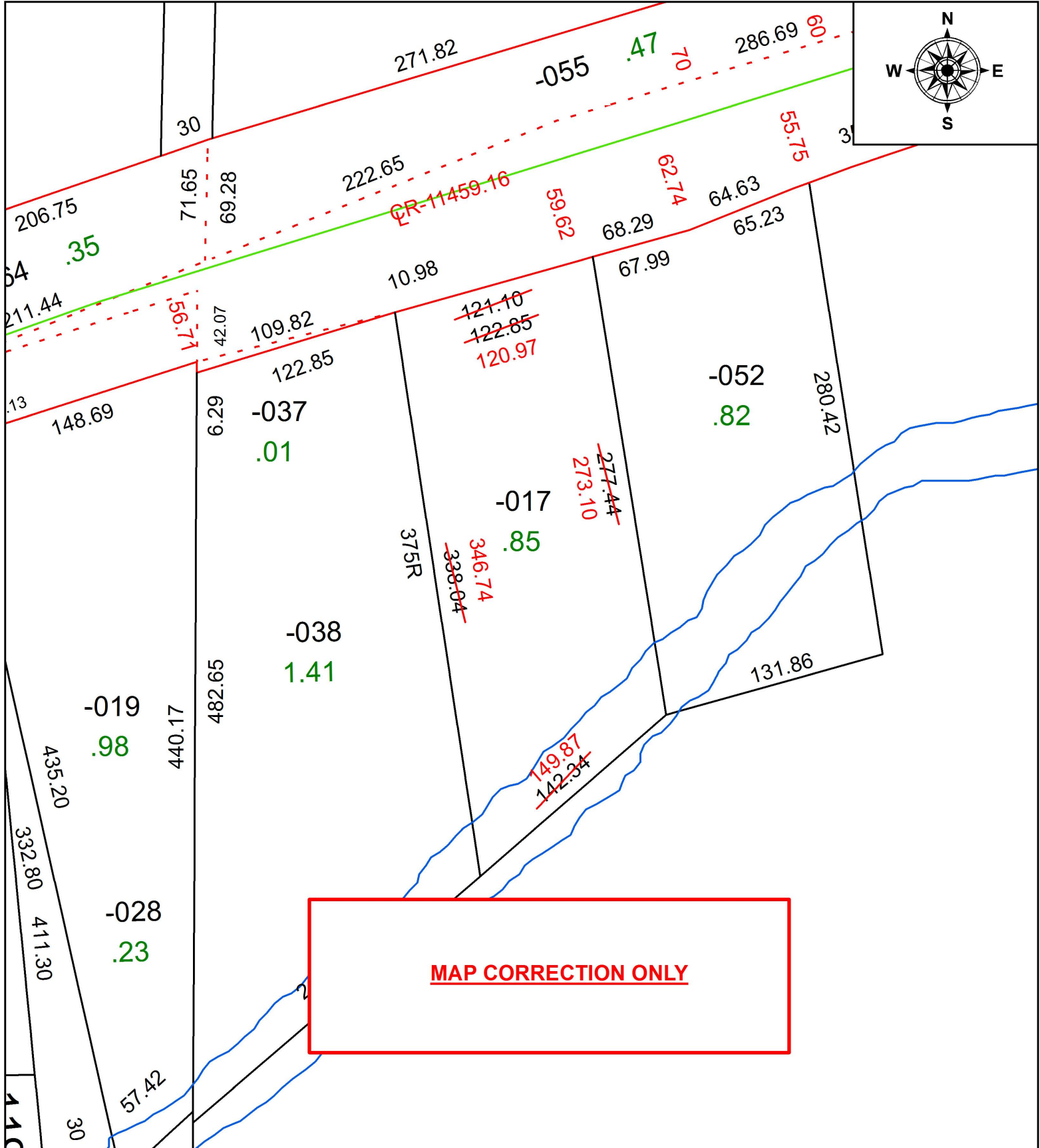


PARENT PARCEL: 03-00-007-102-017

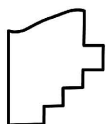
CHILD PARCEL:

STARTING POINT: INTERSECTION OF C/L OF COLORADO AVE. AND EAST LINE OF O.L.7

19-04042-D



**MAP CORRECTION ONLY**



**SPLITS/DEEDS PROCESSED**  
LORAIN COUNTY TAX MAP DEPARTMENT  
226 MIDDLE AVE. ELYRIA, OH

SURVEYED BY:	THOMAS A. SIMON
CLOSURE:	1:76,496
MAP PAGE(S):	3-00-007
APPROVED BY:	RRM DATE: 2-6-19
SCALE:	1" = 75' PRIOR INSTRUMENT: 20130456395